

2012 Proven & Promising Special

Prices effective for orders placed and shipped by **June 29, 2012** or until supplies run out*



Year End Bonus

5% Cash Discount ***

Until December 31st 2011

- ✓ **LARGEST SELECTION**
- ✓ **BEST AVAILABILITY**
- ✓ **LOWEST PRICES**
- ✓ **0% FINANCING ****



NEW DESIGN 878
The breed's # 1 Pathfinder™ Sire
+8 CED & .99 BW acc, Top 5% \$W

\$18/16/14



HIGHER STANDARD
NEW STANDARD x EXTRA H6
+12 CED, +107 YW, +70.60 \$B

\$18/16/14



SAFEGUARD
New Design 50/50 x FORESIGHT
+10 CED, +107 YW, +30 DOC, +82.17 \$B

\$22/20/18



IMAGE MAKER
Breed leading maternal value
+10 CED, +109 YW, Top 10 \$W at +48.88

\$20/18/16



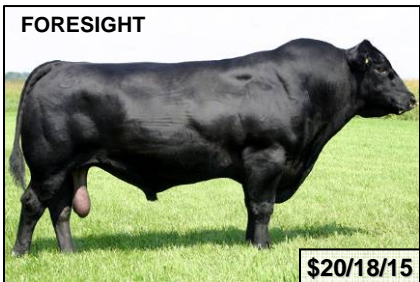
ABSOLUTE
Final Answer x Wulffs EXT 6106
+13 CED, -2.8 BW, +117 YW, +64.86 \$B

\$20/18/16



BLUESTEM
Net Worth x Future Direction
+10 CED, +1.5 BW, +.66 Marb, +73.11 \$B

\$25/22/20



FORESIGHT
+106 YW, +1.72 SC, +20 DOC
+44.71 \$W, +2.54 \$EN, +79.12 \$B

\$20/18/15



TEMPLATE
OBJECTIVE x N BAR PRIME TIME
+11 CED, +104 YW, +19 DOC, +.99 Marb

\$20/18/16



COUNSELOR
Connealy Mentor x LEAD ON
+10 CED, +115 YW, +.98 REA, +81.13 \$B

\$20/18/16



LEAD ON
High accuracy maternal genetics
+19 DOC, +41.58 \$W, +71.72 \$B

\$20/18/15



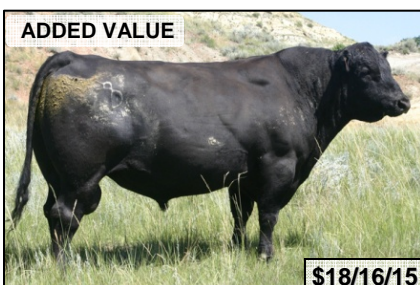
COMPLEMENT
FRANCHISE x Midland
+13 CED, +117 YW, +.86 Marb, +81.62 \$B

\$20/18/16



PREMIUM PRODUCT
FINAL PRODUCT x Freightliner
-0.7 BW, +93 YW, +.81 SC, +.53 REA

\$18/16/15



ADDED VALUE
Net Present Value x N Bar Honcho
-1.6 BW, +52 WW, +.78 SC, +7.74 \$EN

\$18/16/15



DESTINATION 630
DESTINATION 928 x New Frontier
-0.3 BW, +103 YW, +.84 Marb, +83.71 \$B

\$20/18/16



INCENTIVE
OBJECTIVE x Bextor
+9 CED, +126 YW, +40.90 \$W, +84.15 \$B

\$20/18/16

Contact your local ABS Representative or call **1-800-ABS-STUD**

* Special starts Dec. 15, 2011 and ends June 29, 2012. Prices listed are for Retail / 30 / 50 unit volumes. Short supply bulls may be removed from the special early.

** Ask about our Beef Deferred program with no interest and no payments on orders of \$600 or more until November 2012. If payment for the beef deferred balance is not received by November 10, 2012, interest will be imposed on the unpaid balance from the date of purchase at an APR of 15.00%.

*** Cash discounts apply to 29 stud code bulls only and payments must be received within 10 days of shipping.