



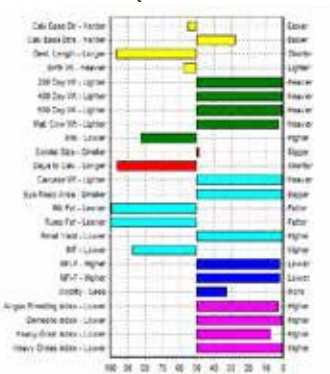
29AN1891 RAMPAGE

QUAKER HILL RAMPAGE OA36 (AMF-NHF-CAF-MAF-DDF)

Reg No.	USA16925771
Born	11/09/2010
BW	30kg
W/205	312kg
Y/365	608kg
SC	39.8cm
FS	-7
Weight	1110kg
Calving Ease	★★★
Carcass Merit	🍖🍖🍖

- Dominant Beef Value
- USA Breed leader ranking in the top 1% for \$Beef, \$Feedlot and \$Weaning Indexes
- Powerfully constructed, heavy muscled, masculine DAYBREAK son with incredible growth and performance
- USA EPD +10 CED with high accuracy birth and performance data reflecting 3,000 plus progeny records in over 500 herds
- Progeny are dominating both the non-parent \$B lists and sales across the country
- Backed by one of the most productive and impressive cow families in the industry. Likely No. 1 Registration bull in USA for 2017
- Outstanding progeny inspections at multiple herds on USA 2017 tour
- Ranks No. 15 Aust. Domestic Index
- 2015 inspection of Rampage and progeny. Progeny are sound, quiet and stylish.

EBV Percentiles for QUAKER HILL RAMPAGE OA36



50th Percentile is the Breed Avg. EBVs for 2016 Born Calves

PEDIGREE

Boyd New Day 8005 Ideal 4355 of OT26 2440
MCC Daybreak QHF Blackcap 6E2 of 4V16 4355
MCC Miss Focus 134 QHF Blackcap 4V16 of 1H8



MID JULY 2018 ANGUS GROUP BREEDPLAN EBVS INDEX VALUES

	CE-DIR	CE-DT	GL	BW	200D	400D	600D	MCW	MILK	SS	DTC	CWT	EMA	RIB	RUMP	RBV%	IMF%	DOC	A/BREED	DOM	H/GRAIN	H/GRASS
EBV	0.0	+1.6	+0.1	+4.6	+65	+110	+151	+127	+11	+1.7	-0.1	+84	+11.6	-4.1	-6.6	+4.9	+0.5	+9	+\$145	+\$138	+\$152	+\$145
Acc	68%	44%	97%	97%	94%	94%	91%	83%	76%	90%	45%	83%	81%	83%	78%	76%	80%	87%				