

# Genetic Proposal CATALOGO ANGUS ABS NOVIEMBRE 2017

November 08, 2017



Profit From Genetic Progress





# 29AN1840 FRONT & CENTER



**CONNELY FRONT & CENTER** AAA 17029809 Born 01/10/2011  
Owned by: Galaxy Beef, MO; ABS Global, Inc., WI

## Front Pasture Maternal Genetics

- ✓ Big time curve bender spread, with a +15 CED and top end growth values
- ✓ The #1 Bull for Sire Alliance Maternal Index with top 1% Intake and Feed Efficiency
- ✓ Outstanding daughter reports with a top 2% \$Weaning Index
- ✓ His dam is a picture perfect Right Answer daughter that was selected as the \$50,000 pick of the Connealy herd by McKellar Angus in 2012

**CALVING EASE** ★★★

**CARCASS MERIT** 🍖🍖

- CONNELY FRONT PAGE 0228
- KESSLERS FRONTMAN R001
- KESSLERS BELL 0024
- CONNELY RIGHT ANSWER 746
- JAS OF CONANGA 9585
- JASE OF CONANGA 4660

SIRE ALLIANCE	EPD	RANK
INTAKE (lb/day)	-.69	1%
ADG (lb/day)	+.03	
EFFICIENCY INDEX	+16.19	1%
TOTAL PROFIT INDEX	+65.37	10%
MATERNAL INDEX	+375.68	1%

Trait	CED	BW	WW	YW	RADG	DMI	YH	SC	DOC	HPG	CEM	Milk	Hd/Dts	MW	MH	CW	Marb	REA	FAT	C/U Pg
EPD	+16	-1.2	+64	+112	+29	-.48	+0.3	+1.56	+14	+10.8	+12	+30		+17	+0.1	+33	+41	+74	+0.014	
Acc	.70	.85	.83	.76	.42	.42	.79	.76	.69	.46	.57	.54	8	.35	.40	.57	.52	.50	.51	7
RANK	2%	10%	15%	15%	10%	10%	65%	10%	45%	40%	15%	15%	60	70%	70%	50%	60%	10%	55%	109

Trait	\\$EN	\\$W	\\$F	\\$G	\\$QG	\\$YG	\\$B
Index	-17.17	+74.14	+91.38	+33.54	+26.13	+7.41	+132.59
RANK	90%	3%	5%	40%	55%	20%	25%

10/27/2017 **TOP 35%**

Recommended for consideration in mating daughters of these sires and or sire lines:

**7229, ABSOLUTE, BRUISER, CAPITALIST, FINAL PRODUCT, PAYWEIGHT 1682, PROPHET, RAMPAGE, RESERVE, SAFEGUARD, SPECIAL FOCUS, UPSHOT, WAYLON**



Dtr: Front & Center x Connealy Sullivan 83A, McKellar Executa Roz 4090, Owned By: DFC Dunn Four Ranch LLC, TX



Dtr: Front & Center x G A R Grid Maker, Myers Georgina 15C, Owned By: Myers Angus Farm, KY

BW	205	365	SC	Yearling Frame	Weight	Height	Mature Frame
			12 Mo.		17 Mo.	17 Mo.	



# 29AN1852 RESERVE



**V A R RESERVE 1111** AAA 16916944 Born 01/31/2011  
Owned by: Vintage Angus, CA; ABS Global, Inc., WI

## Reserve Your Ticket to Efficiency

- ✓ Offers high accuracy Calving Ease combined with excellent thickness and maternal design
- ✓ Outstanding overall performance through the commercially oriented Angus Sire Alliance testing program where he ranks in the top 5% across the board for Total Profit, Feed Efficiency and Maternal Index
- ✓ Progeny proven efficiency sire who ranks in the top 1% for reduced feed intake
- ✓ Sires complete, attractive and sound made cattle with excellent docility
- ✓ His solid calving ease and maternally oriented data package combined with a no holes phenotype add up to great customer satisfaction and mating flexibility

**CALVING EASE** ★★★

**CARCASS MERIT** 🍖🍖🍖🍖

- BOYD NEW DAY 8005
- B/R NEW DAY 454
- B/R RUBY 1224
- CONNEALY ONWARD
- SANDPOINT BLACKBIRD 8809
- RIVERBEND BLACKBIRD 4301

SIRE ALLIANCE	EPD	RANK
INTAKE (lb/day)	-1.00	1%
ADG (lb/day)	-.04	
EFFICIENCY INDEX	+13.44	2%
TOTAL PROFIT INDEX	+72.96	3%
MATERNAL INDEX	+321.85	3%

Trait	CED	BW	WW	YW	RADG	DMI	YH	SC	DOC	HPG	CEM	Milk	Hd/Dts	MW	MH	CW	Marb	REA	FAT	C/U Pg
<b>EPD</b>	+9	+0.7	+51	+92	+24	+0.3	+0.2	+0.27	+22	+11.6	+3	+20	+30	0.0	+27	+79	+77	-.038		
<b>Acc</b>	.87	.96	.95	.92	.56	.56	.92	.92	.88	.58	.81	.80	210	.63	.64	.70	.67	.64	.68	35
<b>RANK</b>	30%	35%	45%	45%	25%	40%	75%	80%	15%	30%	95%	75%	650	45%	80%	70%	15%	10%	3%	1855

Trait	\\$EN	\\$W	\\$F	\\$G	\\$QG	\\$YG	\\$B
<b>Index</b>	+6.62	+51.96	+53.10	+52.53	+39.17	+13.36	+122.46
<b>RANK</b>	25%	35%	40%	3%	15%	1%	35%

10/27/2017 **TOP 35%**

Recommended for consideration in mating daughters of these sires and or sire lines:

**ABSOLUTE, BRILLIANCE, BRUISER, HOOVER DAM, IMPRESSION, INSIGHT, JOURNEY, PROPHET, RAMPAGE, SPECIAL FOCUS, TEN X, TOUR OF DUTY, UPSHOT, WAYLON**

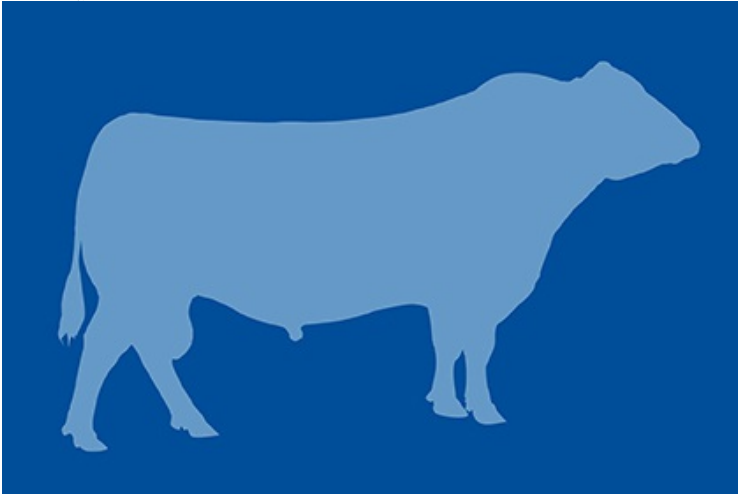


Dtr: RESERVE x ALL AROUND, Cox Miss Lucy 4D79, Cox Ranch, TX

BW 205 365	SC	Yearling Frame	Weight Height	Mature Frame
	12 Mo.		Mat. 30 Mo.	



# 29AN1868 PROFIT DRIVEN



**YON PROFIT DRIVEN Z228** AAA 17264260 Born 10/02/2011  
 Owned by: Yon Family Farms, SC; ABS Global, Inc., WI

## Designed and Driven for Profit

- ✓ The standout of 178 bulls in the Yon Family Farms fall 2012 test group
- ✓ Outstanding performance posting a 112 YW ratio and 127 REA ratio
- ✓ His EPDs are enhanced by a strong genomics profile that ranks in the top 25% of the breed in nearly all key traits
- ✓ His top 4% Residual Average Daily Gain EPD and PF50 profile both indicate a strong likelihood that he will follow his sire as a source of elite feed efficiency genetics
- ✓ Heavy muscled, sound and attractive patterned with a top 2% DOC EPD

MYTTY IN FOCUS  
 YON FUTURE FOCUS T219  
 YON HAZEL R133  
 G A R NEW DESIGN 5050  
 YON BURGESS W361  
 YON BURGESS T495

SIRE ALLIANCE	EPD	RANK
INTAKE (lb/day)	+ .08	
ADG (lb/day)	+ .03	
EFFICIENCY INDEX	+2.42	35%
TOTAL PROFIT INDEX	+62.76	15%
MATERNAL INDEX	+289.30	15%

Trait	CED	BW	WW	YW	RADG	DMI	YH	SC	DOC	HPG	CEM	Milk	Hd/Dts	MW	MH	CW	Marb	REA	FAT	C/U Pg
EPD	+14	-0.2	+62	+111	+26	+49	+0.7	+1.62	+29	+12.0	+15	+43		-34	-0.1	+50	+74	+1.28	-.041	
Acc	.54	.75	.70	.61	.51	.51	.50	.59	.44	.35	.40	.42	3	.45	.41	.61	.59	.55	.54	28
RANK	4%	20%	15%	15%	20%	80%	20%	10%	3%	25%	1%	1%	13	95%	85%	15%	20%	1%	2%	12

Trait	\\$EN	\\$W	\\$F	\\$G	\\$QG	\\$YG	\\$B
Index	-26.51	+88.81	+70.35	+53.01	+37.79	+15.22	+162.38
RANK	95%	1%	20%	3%	20%	1%	4%

10/27/2017 **TOP 35%**

BW 205 365 SC Yearling Frame Weight Height Mature Frame



# 29AN1873 PROTOCOL



## Protege at His Best

- ✓ Offers outstanding performance and end product value in a heifer friendly package
- ✓ His double digit Calving Ease EPD and low birth weight genetics set him apart from other PROTEGE sons
- ✓ Strong topped, thick made and super patterned

**CALVING EASE** ★★★

**CARCASS MERIT** 🍖🍖🍖

RITO 112 OF 2536 RITO 616  
 GAR-EGL PROTEGE  
 L B 6807 ISABEL 339  
 MYTTY IN FOCUS  
 FROSTY FOCUS 2610  
 FROSTY G BY D 4367

SIRE ALLIANCE	EPD	RANK
INTAKE (lb/day)	+ .61	
ADG (lb/day)	+ .13	3%
EFFICIENCY INDEX	+5.90	15%
TOTAL PROFIT INDEX	+64.08	15%
MATERNAL INDEX	+215.47	



**SCHIEFELBEIN PROTOCOL 392** AAA 17362475 Born 02/14/2012

Owned by: Schiefelbein Farms LLC, MN; Kevin & Jess Keckler, SD; Raymond Longbrake, SD; Kenny Gesinger, SD; Brady Wolfgram, MN; Lamb Ranch, SD; ABS Global, Inc., WI

Trait	CED	BW	WW	YW	RADG	DMI	YH	SC	DOC	HPG	CEM	Milk	Hd/Dts	MW	MH	CW	Marb	REA	FAT	C/U Pg
<b>EPD</b>	+10	-0.7	+63	+115	+18	+40	+0.2	+0.94	+15	+8.5	+1	+19		+30	+0.3	+35	+94	+23	+063	
<b>Acc</b>	.60	.82	.79	.72	.41	.41	.55	.67	.61	.33	.48	.45	7	.39	.44	.55	.51	.49	.50	7
<b>RANK</b>	20%	15%	15%	10%	60%	70%	75%	35%	40%	75%	95%	80%	26	45%	50%	45%	10%	80%	95%	63

Trait	\\$EN	\\$W	\\$F	\\$G	\\$QG	\\$YG	\\$B
<b>Index</b>	-4.32	+59.45	+79.06	+36.36	+43.02	-6.66	+122.05
<b>RANK</b>	55%	20%	10%	35%	10%	95%	35%

10/27/2017 **TOP 35%**

BW 205 365	SC	Yearling Frame	Weight Height	Mature Frame
		12 Mo.		



# 29AN1929 CONVICTION



**QUAKER HILL CONVICTION 3N30** AAA 17815101 Born 09/12/2013  
 Owned by: Quaker Hill Farm LLC, VA; Carolton Farms LLC, VA; ABS Global, Inc., WI

## Genetics To Use With Conviction

- ✓ Arguably the best son of Connealy Confidence in the business for a combination of \$W and \$B indexes
- ✓ He's also one of Confidence's best sons for scrotal circumference
- ✓ Moderate framed, deep ribbed bull with a wide top
- ✓ Maternal brother to RAMPAGE, INSIDE TRACK and FIRESTORM



CONNEALY TOBIN  
 CONNEALY CONFIDENCE 0100  
 BECKA GALA OF CONANGA 8281  
 IDEAL 4355 OF OT26 2440  
 QHF BLACKCAP 6E2 OF 4V16 4355  
 QHF BLACKCAP 4V16 OF 1H8

Trait	CED	BW	WW	YW	RADG	DMI	YH	SC	DOC	HPG	CEM	Milk	Hd/Dts	MW	MH	CW	Marb	REA	FAT	C/U Pg
EPD	+13	-1.1	+55	+99	+16	+52	-0.3	+0.55	+16	+8.7	+8	+31		+1	-0.6	+41	+52	+92	+028	
Acc	.41	.58	.52	.43	.30	.30	.45	.46	.39	.26	.35	.36	0	.36	.41	.44	.40	.39	.36	0
RANK	10%	10%	35%	30%	70%	80%	95%	65%	40%	70%	55%	10%	0	85%	95%	30%	40%	2%	75%	0

Trait	\\$EN	\\$W	\\$F	\\$G	\\$QG	\\$YG	\\$B
Index	-9.02	+70.47	+52.55	+37.19	+30.53	+6.66	+127.03
RANK	70%	5%	40%	30%	40%	25%	30%

10/27/2017 **TOP 35%**



Full\_Sister: Full Sister - Quaker Hill Blackcap 3N23, Quaker Hill Farm, VA

BW	205	365	SC	Yearling Frame	Weight	Height	Mature Frame
			12			12	
			Mo.			Mo.	



# 29AN1949 CROSSBOW



**SPRING COVE CROSSBOW** AAA 17924903 Born 01/24/2014  
Owned by: Spring Cove Ranch, ID; ABS Global, Inc., WI

## Taking Aim at Total Profit

- ✓ Perfect blend of calving ease, growth and maternal in one package
- ✓ Sired by the balanced-trait, Sire Alliance leader BROKEN BOW
- ✓ Combines a +14 Calving Ease EPD with a +61 \$Weaning Index and top 5% Beef Value
- ✓ His first progeny are posting average ratios of 94 at birth and 105 at weaning
- ✓ Very correct made with a big top and extra muscle expression through his rear quarter



SUMMITCREST COMPLETE 1P55  
 KM BROKEN BOW 002  
 SUMMITCREST PRINCESS 0P12  
 C C A EMBLAZON 702  
 SPRING COVE PRETTY 205  
 SPRING COVE PRETTY 009

Trait	CED	BW	WW	YW	RADG	DMI	YH	SC	DOC	HPG	CEM	Milk	Hd/Dts	MW	MH	CW	Marb	REA	FAT	C/U Pg
EPD	+17	-1.7	+63	+113	+.24	+.28	+0.1	+0.15	+15	+10.8	+15	+19		+48	+0.4	+52	+.99	+.52	+.008	
Acc	.50	.76	.67	.47	.26	.26	.44	.52	.39	.22	.30	.33	0	.31	.36	.45	.39	.39	.37	0
RANK	1%	10%	15%	15%	25%	60%	85%	85%	40%	40%	1%	80%	0	20%	40%	10%	5%	35%	45%	3

Trait	\\$EN	\\$W	\\$F	\\$G	\\$QG	\\$YG	\\$B
Index	-4.76	+60.40	+77.84	+45.85	+44.15	+1.70	+163.14
RANK	55%	20%	15%	10%	5%	70%	4%

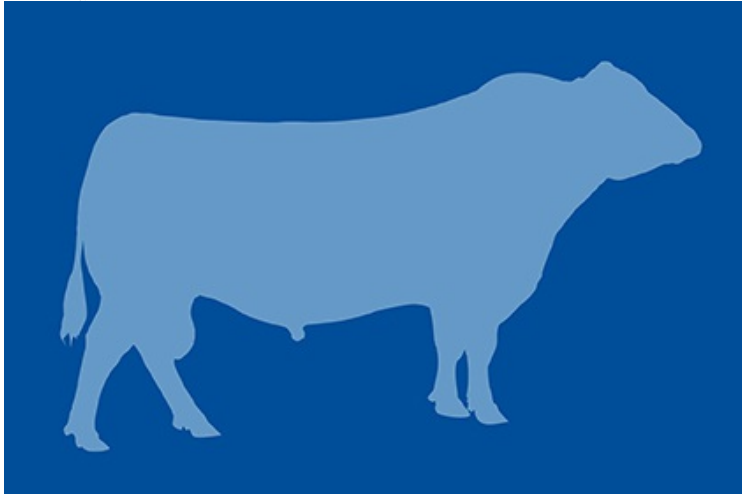
10/27/2017 **TOP 35%**

Recommended for consideration in mating daughters of these sires and or sire lines:  
**POWER TOOL, RAMPAGE, UPSHOT, WAYLON**

BW 205 365 SC Yearling Frame Weight Height Mature Frame



# 29AN1980 STRONGBOX



**RCL STRONGBOX 5073** AAA 18298890 Born 01/16/2015  
 Owned by: ABS Global, Inc., WI

## Protect Your Herd's Genetic Value

- ✓ Attractive made power and performance bred bull
- ✓ Ranks in the top 1% of the breed for 6 different EPD and Indexes, WW, YW, CW, \$W, \$F and \$B
- ✓ His own 908 lb WW, 1527 lb YW, and almost 17 in REA were second to none in his contemporary group
- ✓ His powerhouse maternal dam has posted an average NR of 4@109
- ✓ Phenotypically you will love this big stout heavy muscled power bull

DIAMOND JUSTICE 901S  
 DIAMOND IN THE ROUGH  
 DIAMOND BLACK LADY 7206  
 H A IMAGE MAKER 0415  
 RCL BARB 0738  
 RCL BARB 7386

Trait	CED	BW	WW	YW	RADG	DMI	YH	SC	DOC	HPG	CEM	Milk	Hd/Dts	MW	MH	CW	Marb	REA	FAT	C/U Pg
EPD	+7	+2.5	+73	+141	+40	+41	+0.3	+0.79	+17	+10.0	+11	+19		+61	+0.7	+76	+24	+87	-.021	
Acc	.36	.57	.51	.42	.21	.21	.39	.40	.32	.17	.30	.32	0	.28	.33	.41	.37	.37	.35	0
RANK	45%	75%	3%	1%	1%	75%	65%	45%	35%	50%	20%	80%	0	10%	15%	1%	80%	4%	10%	0

Trait	\\$EN	\\$W	\\$F	\\$G	\\$QG	\\$YG	\\$B
Index	-14.18	+58.14	+121.96	+23.09	+18.24	+4.85	+176.71
RANK	85%	25%	1%	75%	85%	45%	2%

10/27/2017 **TOP 35%**

BW 205 365 SC Yearling Frame Weight Height Mature Frame





# 29AN1984 BEDROCK



## Solid Calving Ease & Maternal Base

- ✓ Four star calving ease potential with an outstanding maternal pedigree
- ✓ Top 1% Calving Ease with a -2.7 Birth Weight EPD
- ✓ High Docility sire with top end Heifer Pregnancy and Scrotal Circumference values
- ✓ BEDROCK is moderate framed, wide based, and attractive. He's clean sheathed, big SC and deep soft-sided with a ton of middle and flank.

CONNEALY CONSENSUS 7229  
 CONNEALY BLACK GRANITE  
 EURA ELGA OF CONANGA 9109  
 CAR EFFICIENT 534  
 BARSTOW BETTY X12  
 BARSTOW BETTY U18

**BARSTOW BEDROCK**      AAA 18342377      Born 01/30/2015  
 Owned by: Barstow Angus, NE; ABS Global, Inc., WI

Trait	CED	BW	WW	YW	RADG	DMI	YH	SC	DOC	HPG	CEM	Milk	Hd/Dts	MW	MH	CW	Marb	REA	FAT	C/U Pg
EPD	+14	-1.5	+58	+99	+19	+32	+0.1	+1.07	+25	+7.6	+13	+25		+20	+0.5	+40	+26	+49	+020	
Acc	.35	.49	.43	.39	.29	.29	.48	.41	.36	.24	.31	.34	0	.33	.38	.42	.39	.39	.37	0
RANK	3%	5%	25%	30%	55%	55%	85%	30%	10%	85%	5%	35%	0	65%	30%	35%	85%	45%	65%	0

Trait	\\$EN	\\$W	\\$F	\\$G	\\$QG	\\$YG	\\$B
Index	-4.47	+66.63	+54.68	+21.41	+19.18	+2.23	+113.30
RANK	55%	10%	35%	90%	85%	70%	50%

10/27/2017 **TOP 35%**

BW 205 365 SC Yearling Frame Weight Height Mature Frame  
 13 Mo.



# 29AN1993 HIGHWAYMAN



**FF HIGHWAYMAN 4W10** AAA 18193706 Born 10/10/2014  
 Owned by: Friendship Farms, GA; ABS Global, Inc., WI

## Fast Lane Performance and Carcass Value

- ✓ Moderate birth weight Waylon son that's super sound, good footed and rugged made
- ✓ Breed leading performance and Marbling with elite \$Weaning and \$Beef
- ✓ Dam is a big bodied, productive Daybreak daughter who has also produced the ABS standout PARTNER

GAR-EGL PROTEGE  
 BALDRIDGE WAYLON W34  
 BALDRIDGE BLACKCAP T163  
 MCC DAYBREAK  
 G A R DAYBREAK M721  
 G A R OBJECTIVE 2827

Trait	CED	BW	WW	YW	RADG	DMI	YH	SC	DOC	HPG	CEM	Milk	Hd/Dts	MW	MH	CW	Marb	REA	FAT	C/U Pg
EPD	+8	+1.6	+74	+131	+.23	+.65	+0.3	+0.09	+27	+12.6	+9	+24		+40	+0.1	+67	+1.21	+.91	+.004	
Acc	.38	.56	.46	.41	.28	.28	.43	.44	.39	.25	.32	.33	0	.34	.39	.44	.40	.40	.38	0
RANK	35%	55%	2%	2%	30%	90%	65%	90%	5%	20%	40%	45%	0	30%	70%	1%	2%	3%	40%	2

Trait	\\$EN	\\$W	\\$F	\\$G	\\$QG	\\$YG	\\$B
Index	-13.58	+74.86	+96.30	+53.10	+48.67	+4.43	+187.92
RANK	85%	3%	4%	3%	2%	45%	1%

10/27/2017 **TOP 35%**



Dam: Dam - G A R Daybreak M721, Owned by: Haley Fairway Farms, TX

BW 205 365 SC Yearling Frame Weight Height Mature Frame

# Proven Sire Alliance bulls deliver profit and predictability from Pasture to Plate™

**Long lasting, productive and profitable daughters**

## IN THE PASTURE

Beyond performance, carcass value and efficiency, daughters of Sire Alliance bulls are monitored for maternal function and profitability.

The Sire Alliance Maternal Index incorporates daughter productivity and fertility data including Heifer Pregnancy and Stayability.

The Angus Sire Alliance Program was initiated by Circle A Angus Ranch in 1996 to objectively measure commercial performance and real world value from birth-to-harvest. The program pioneered the use of selection indexes in the beef industry and remains the most comprehensive source of feedlot profit, efficiency and maternal performance.

ABS has been a marketing partner with Circle A since the first bulls graduated in 1998 and the Sire Alliance program has been an exclusive ABS progeny testing program since 2008. The data derived on ABS sires not only provides you, our customers, added accuracy and reliability, but also unique and valuable insight into feed efficiency and commercial profitability that is not available anywhere else today.

Beyond the proven Sire Alliance graduates offered in this directory, we are also utilizing Sire Alliance data to develop and select the next generation of ABS sires.

**High performing steers backed by documented efficiency genetics**

## IN THE FEEDLOT

The Sire Alliance is the longest running program of it's kind with progeny individually measured for feed intake since 1998.

While high feed cost in recent years has made feed efficiency a key trait of interest, no one can match the Sire Alliance's foresight and decade and a half of intake measurements.

**Carcasses that deliver quality and cutability to earn grid premiums**

## ON THE RAIL

Today, the Sire Alliance and Circle A Ranch are the largest contributors to the American Angus Association carcass data base.

The typical Sire Alliance graduate has 30 steer progeny evaluated for carcass merit which by itself generates higher reliability and accuracy levels than 90% of the bulls that qualify for the Main Sire Summary listing.

## TOTAL PROFIT

- ✓ Real World Data™ for real world profit
- ✓ Complete performance data from birth to harvest including:
  - Calving Ease
  - Pre-weaning performance
  - Feedlot gain and intake
  - Carcass yield and quality
- ✓ Derived from large commercial contemporary groups
- ✓ The first modern beef selection index in 1996 and still the most comprehensive

	Spring 2017 Sire Alliance Data	TOTAL PROFIT INDEX	TOTAL PROFIT %RANK	PROGENY EVALUATED
1	BRUISER	\$87.53	Top 1%	208
	FUTURE FOCUS (Ref)	\$86.23	Top 1%	280
	PROTÉGÉ (Ref)	\$83.94	Top 1%	95
	DAYBREAK (Ref)	\$82.18	Top 1%	313
2	RAMPAGE (New)	\$79.43	Top 2%	15
3	PAYWEIGHT 1682	\$74.82	Top 3%	122
4	FOREMOST	\$74.44	Top 3%	88
5	RESERVE	\$72.96	Top 3%	73
6	DESTINATION 630	\$72.13	Top 4%	73
7	FUTURE FORCE	\$72.09	Top 4%	30
8	RAINMAKER P175	\$70.36	Top 5%	118
9	HIGH NOON	\$69.52	Top 5%	205
10	ABSOLUTE	\$68.40	Top 10%	116
11	NEW LEVEL	\$67.98	Top 10%	380
12	IMPRESSION	\$67.30	Top 10%	598
13	FRONT & CENTER (New)	\$65.37	Top 10%	13
14	BROKEN BOW	\$65.23	Top 10%	61
15	PROTOCOL (New)	\$64.08	Top 15%	14
16	OBJECTIVE	\$62.70	Top 15%	375
17	ADDED VALUE	\$61.57	Top 15%	115
18	BLUESTEM	\$60.52	Top 20%	73
19	SUBSTANTIAL	\$58.50	Top 25%	97
20	SAFEGUARD	\$57.53	Top 25%	112
21	MONUMENT	\$57.25	Top 25%	167
	IN FOCUS (Ref)	\$54.81	Top 35%	530
22	RESOLUTE	\$53.90	Top 35%	85
23	EXTRA K205	\$53.69	Top 35%	360
24	FOCAL POINT	\$53.25		193
25	FINAL PRODUCT	\$51.99		155
26	MULTI TOOL	\$51.76		42
27	PIONEER WAVE	\$48.69		70
28	UP RIVER	\$48.09		46
29	UPSHOT	\$47.28		200
30	COMPLEMENT	\$47.05		282



# ANGUS SIRE ALLIANCE



## FEED EFFICIENCY

- ✓ The Feed Efficiency Index identifies the most profitable combinations of intake and gain
- ✓ Backed by 19 years of individual progeny intake data
- ✓ Feed efficiency genetics can account for as much as \$40 value difference per calf

Spring 2017 Sire Alliance Data	MATERNAL INDEX	MATERNAL INDEX %RANK	MAT
1 FRONT & CENTER (New)	\$375.68	Top 1%	.13
2 BRUISER	\$355.82	Top 1%	.51
3 PAYWEIGHT 1682	\$332.77	Top 2%	.06
4 FRONTMAN	\$331.38	Top 3%	.49
5 RESERVE	\$321.85	Top 3%	.31
6 FUTURE FORCE	\$317.92	Top 4%	.27
FUTURE FOCUS (Ref)	\$314.43	Top 4%	.68
7 IMPRESSION	\$308.38	Top 5%	.71
8 CHINOOK	\$306.39	Top 10%	.58
9 SPECIAL FOCUS	\$304.08	Top 10%	.53
RAMPAGE (New)	\$303.62	Top 10%	.15
DAYBREAK (Ref)	\$293.64	Top 10%	.70
11 SUBSTANTIAL	\$293.44	Top 15%	.07
12 BLUESTEM	\$292.70	Top 15%	.49
13 BRILLIANCE	\$292.63	Top 15%	.66
14 NEW LEVEL	\$289.77	Top 15%	.76
15 ABSOLUTE	\$289.07	Top 15%	.48
16 DESTINATION 630	\$288.52	Top 15%	.43
IN FOCUS (Ref)	\$288.26	Top 15%	.78
17 FINAL PRODUCT	\$287.94	Top 15%	.62
18 PLAINSMAN	\$287.45	Top 15%	.51
19 WIND BREAK	\$283.29	Top 20%	.11
20 IMAGE MAKER	\$283.20	Top 20%	.77
21 HIGH NOON	\$282.39	Top 20%	.43
22 DEFINITIVE	\$282.25	Top 20%	.45
23 UP RIVER	\$276.10	Top 25%	.31
24 RESOLUTE	\$275.52	Top 25%	.17
25 MONUMENT	\$268.53	Top 30%	.52
26 RITO 6EM3	\$267.36	Top 30%	.43
27 COMPLEMENT	\$260.87	Top 35%	.64
28 FOCUS 2U66	\$255.69		.45
29 FOCAL POINT	\$255.14		.61
30 BROKEN BOW	\$252.15		.40

Spring 2017 Sire Alliance Data	FEED EFFICIENCY INDEX	FEED EFFICIENCY %RANK	ADG EPD (LB/DAY)	ADG ACC	ADG %RANK	INTAKE EPD (LB/DAY)	INTAKE ACC	INTAKE %RANK
1 BRUISER	\$27.70	Top 1%	+.16	.68	Top 2%	-.36	.47	Top 5%
2 ABSOLUTE	\$18.95	Top 1%	+.15	.66	Top 3%	-.00	.50	Top 35%
3 FRONT & CENTER (New)	\$16.19	Top 1%	+.03	.34		-.69	.32	Top 1%
PROTÉGÉ (Ref)	\$15.31	Top 1%	+.15	.55	Top 2%	+.22	.40	
4 MONUMENT	\$13.86	Top 2%	+.11	.70	Top 10%	+.01	.51	Top 35%
5 RESERVE	\$13.44	Top 2%	-.04	.49		-1.00	.47	Top 1%
DAYBREAK (Ref)	\$13.37	Top 3%	+.12	.77	Top 4%	+.10	.60	
6 PAYWEIGHT 1682	\$11.67	Top 4%	+.01	.67		-.53	.42	Top 3%
7 RAMPAGE (New)	\$11.30	Top 4%	+.08	.37	Top 15%	-.05	.31	Top 25%
8 UP RIVER	\$11.00	Top 4%	+.05	.41	Top 35%	-.27	.33	Top 10%
9 SUBSTANTIAL	\$10.84	Top 5%	+.05	.64	Top 30%	-.21	.49	Top 10%
10 BRILLIANCE	\$10.68	Top 5%	+.03	.76		-.36	.60	Top 5%
11 WIND BREAK	\$10.40	Top 5%	+.01	.62		-.48	.49	Top 4%
12 FRONTMAN	\$8.64	Top 10%	-.02	.65		-.57	.47	Top 2%
13 FUTURE FORCE	\$7.69	Top 10%	+.07	.38	Top 20%	+.09	.35	
14 RESOLUTE	\$7.68	Top 10%	+.05	.62	Top 30%	-.05	.45	Top 25%
15 NEW LEVEL	\$6.96	Top 15%	+.09	.78	Top 10%	+.28	.61	
16 PROTOCOL (New)	\$5.90	Top 15%	+.13	.37	Top 3%	+.61	.32	
17 FINAL PRODUCT	\$5.83	Top 15%	+.09	.67	Top 15%	+.30	.48	
FUTURE FOCUS (Ref)	\$5.40	Top 20%	+.05	.75	Top 30%	+.07	.61	
18 COMPLEMENT	\$5.22	Top 20%	+.10	.77	Top 10%	+.44	.58	
IN FOCUS (Ref)	\$4.43	Top 20%	+.06	.79	Top 25%	+.21	.54	
19 DESTINATION 630	\$4.34	Top 20%	-.02	.54		-.38	.45	Top 4%
20 BLUESTEM	\$4.16	Top 25%	-.00	.59		-.24	.42	Top 10%
21 SPECIAL FOCUS	\$3.92	Top 25%	+.00	.62		-.18	.42	Top 15%
22 RAINMAKER P175	\$3.73	Top 25%	+.08	.67	Top 15%	+.38	.47	
23 HIGH NOON	\$3.00	Top 30%	+.05	.74	Top 35%	+.15	.55	
24 IMPRESSION	\$2.19	Top 35%	+.05	.82	Top 30%	+.24	.66	
25 PLAINSMAN	\$1.65		+.00	.65		-.08	.45	Top 20%
26 FOCUS 2U66	\$1.27		-.03	.57		-.29	.51	Top 10%
27 ADDED VALUE	\$(0.68)		+.04	.65	Top 35%	+.34	.44	
28 RITO 6EM3	\$(0.86)		-.01	.54		+.01	.40	Top 35%
29 FOCAL POINT	\$(1.21)		+.00	.73		+.07	.56	
30 SAFEGUARD	\$(1.72)		+.12	.66	Top 4%	+.92	.47	

## MATERNAL PROFIT

- ✓ This index looks at lifetime value differences of a bull's daughters
- ✓ Includes Milk, Heifer Pregnancy and Cow Stayability data in addition to performance, efficiency and carcass merit
- ✓ An excellent guide to balancing all economically important traits if you are retaining heifers

Red = New Sire Alliance Graduate, (Ref) = Reference Sire



JOSE LUIS SALAMANCA | Mobile : 3204131879 | jose.salamanca@genusplc.com

THANK YOU FOR YOUR BUSINESS!