

2023 - 2024

NuEra GENETICS™

BEEF DIRECTORY

NUERA
GENETICS™



CONTENTS

| CONTENTS | PAGE NO. | CONTENTS | PAGE NO. |
|------------------------|----------|----------------------|----------|
| BEEF ADVANTAGE | 3 | NEWPOLE PATRIOT | 20 |
| GENUS ABS | 4 | NUERA T15 P0207 (P) | 21 |
| FERTILITY ADVANTAGE | 6 | NEWPOLE KOWTOW | 21 |
| NUERA GENETICS™ | 7 | NUERA T15 P0180 | 22 |
| NUERA T14 0136 | 7 | NUERA MAGNUM | 22 |
| HW FLETCHER | 8 | NUERA MILESTONE | 23 |
| NUERA T14 0191 | 8 | NUERA T15 P0201 | 23 |
| NUERA T14 0156 | 9 | GELLAN OGIOSI | 24 |
| NUERA T14 0072 | 9 | FERTILITY PLUS | 24 |
| SKAILL DALTON | 10 | BARWISE 1 PROTEUS | 25 |
| NUERA T14 0155 | 10 | NUERA GENETICS | 26 |
| NUERA T14 0142 | 11 | FISHER 1 RANCHER (P) | 28 |
| NUERA T14 0144 | 11 | SOLPOLL 1 SPIKE | 28 |
| MILLBRAE BLACK JACKDAW | 12 | TOMSCHOICE ONSLOW | 29 |
| SKAILL EMPEROR | 12 | TOMSCHOICE NATION | 29 |
| GAME CHANGER | 13 | TWEEDDALE LENNOX | 30 |
| NEWPOLE KOJAK | 14 | DENIZES INFERNO | 30 |
| FOREST NORTHPOLE | 14 | GARMOUTH KINGSTON | 31 |
| NUERA OPTIMUS PRIME | 15 | CARREG SAINFOIN | 31 |
| MAES NUMBER ONE | 15 | CARREG UTHARAPTOR | 32 |
| NUERA NIGHTRIDER | 16 | ARUBIAL OVERTURE | 32 |
| MAES OSBOURNE | 16 | WARRENDALE WAGYU | 33 |
| GREYSTONE NOMAD | 17 | TRAIT LEADERS | 34 |
| CROFTENDS MONTY | 17 | BARWISE 1 TOLKEN | 36 |
| QUARRY BANK MONEYMAN | 18 | GLENVALE 1 FERGUSON | 36 |
| GREYSTONE OXFORD | 18 | BARKISLAND RASCAL | 37 |
| NUERA ORACLE | 19 | ALAGILS SATELLITE | 37 |
| BIRSEMOHR NANDO | 19 | OUR BEEF TEAM | 38 |
| NEWPOLE LANCER | 20 | WINNING GAME PLAN | 39 |

SPECIALIST SYMBOLS



Sire is not eligible for pedigree use, commercial use only.



Sire is proven on over 120 calving's in over 60 dairy herds.



Sire is eligible for pedigree use with progeny being able to be registered subject to a royalty fee.



Sire is classed as a Superior Sire with Meadow Quality Ltd with premium available.



Sire has proven to consistently produce blue roan coloured calves, British Blue specific.

WELCOME

to the Genus ABS NuEra Genetics™ Directory



Genus ABS NuEra Genetics™, deliver proven and reliable beef genetics for the dairy farmer to maximise calf crop value while driving beef supply chain efficiency to enhance sustainability & profitability.



What sets Genus ABS NuEra Genetics™ apart from other beef on dairy programmes?

Not every beef on dairy calf has the same genetic value. Each Genus ABS NuEra Genetics™ sire delivers:

- Tailored beef genetics for dairy farms
- Proven and reliable performance on dairy cows
- Highly marketable calves
- Real world data driven results

HOW DOES IT WORK?

The index includes extensive Real-World-Data, including over 100,000 Genus ABS Beef Calving Survey data sets from Beef Cornerstone, industry standard figures and sales prices from external stakeholders. This data provides the essential foundation for our index.

BeefAdvantage™ is available on all our proven sires from the following breeds: Aberdeen-Angus, British Blue, Hereford, Limousin and Simmental.

*Compared to an average Genus ABS beef sire of the same breed.

Index for dairy farmers

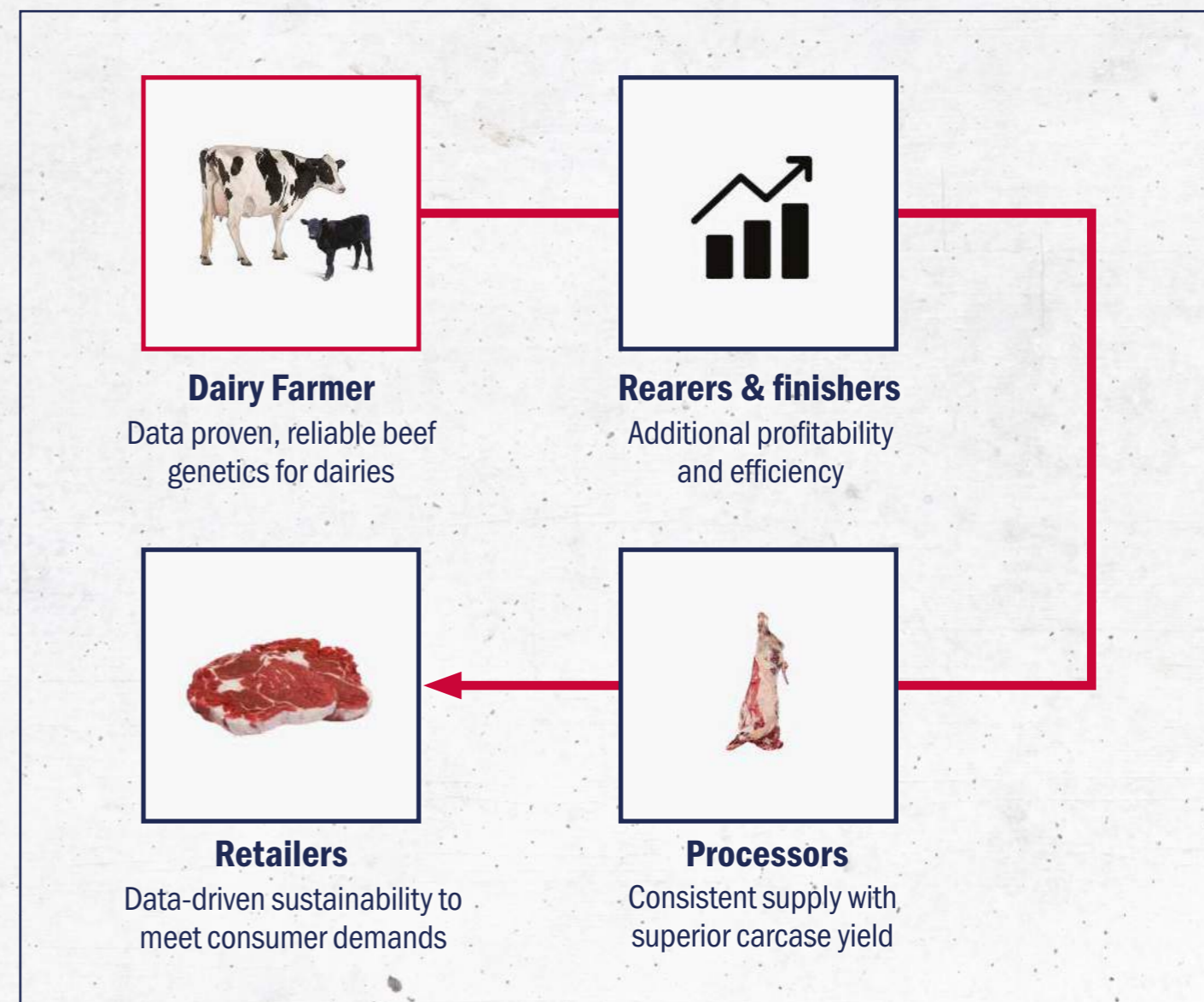
The additional financial benefit a proven Genus ABS beef sire can offer per calving* to a dairy farmer.



Genus ABS is creating efficient, profitable and sustainable beef genetics for our growing world population.

NuEra Genetics™ was started more than 10 years ago by Genus ABS. It allows our highly skilled team to use targeted genetic improvement to create more efficiencies within our customer system.

The power of NuEra is in rapid genetic progress resulting in a consistent, predictable experience for beef producers and consumers. And more profitability for everyone along the supply chain, helping to create a more sustainable food system to feed a world hungry for protein.



"Finished bull carcass weights have increased by 30kg since we started purchasing calves by NuEra Profit Max sires that have been identified as having superior traits for growth and carcass yield. This has been achieved in the same time frame as average cattle and using the same quantity of feed."

Robert Graham
Beef Finisher, Yorkshire

At Genus ABS we're committed to bringing your fertility ambitions to reality



FertilityAdvantage is a new index based on 570,000 inseminations, assessing our NuEra Beef Genetics™ fertility performance in dairy herds.

The index identifies any sires that fall below our stringent thresholds for fertility performance and removes them from the market, leaving us with sires in our Silver, Gold & Platinum categories, generating our dairy farmers up to £34* extra per insemination.

FERTILITYADVANTAGE – Fertility that's outstanding in its field.



Contact your local business adviser today to find out more, or call us on **01270 616681**

*Platinum sires



Sires that carry the NuEra prefix or symbols are a direct result of our NuEra Genetics™ breeding programme, and have been created specifically to carry traits suitable for use within the dairy herd and the beef supply chain.

Not eligible for pedigree use: sire is genetically protected meaning resulting progeny cannot be registered as pedigree. Sire is eligible for use on the dairy population only.

Understanding NuEra Numbered Sires:

NuEra = Genetics created by Genus ABS

T14 = Pure Bred Angus

T15 = Pure Bred British Blue

Number = Unique sire identification number, for example: 19801315(US)45

To register a calf with BCMS, the sire eartag must be used. For example NuEra T14 0135 ear tag number is: 19801315(US)45

NuEra T14 0136



ANGUS



PROGENY OF NuEra T14 0136

NUERA T14 0136

EAR TAG: 19983907(US)46 **GENUS ABS CODE:** AA1834 **NAAB CODE:** 829XB0136

SIRE: BYREGO BLACK MAGIC 3348 (SS) (IMP) **DAM:** NUERA T14 E0897 **MGS:** K C F BENNET ABSOLUTE (SS) (IMP)

USE EAR TAG NUMBER TO REGISTER CALVES: 19983907(US)46 PROGENY FROM THIS SIRE ARE NOT ELIGIBLE FOR PEDIGREE USE

BEEFADVANTAGE™ £101.49

GENUS BEEF CALVING SURVEY ON DAIRY COWS ONLY

Calvings 43 Herds 145 Reliability ★★

| | 70 BSI | 100 BSI | 130 BSI | GENUS ABS BREED AV. | PROVEN STATISTIC |
|------------------------|--------|---------|---------|---------------------|------------------|
| Calving Ease (heifers) | | | 130 | 4.9% | 0.1% |
| Calving Ease (cows) | | 115 | | 1.5% | 0.9% |
| Gestation Length | | | 125 | 282 days | 279 days |
| Calf Quality | | | 130 | 52% | 69% |
| Calf Survivability | | | 130 | 3.6% | 1.6% |

HW FLETCHER



ANGUS



PROGENY OF HW FLETCHER



HW FLETCHER

EAR TAG: UK546977401558 **GENUS ABS CODE:** AA1583 **NAAB CODE:** 29AN2082
SIRE: OAKCHURCH DUSTER M109 **DAM:** NETHERTON FLEUR M710 **MGS:** S A V BRAVE 8320
USE EAR TAG NUMBER TO REGISTER CALVES: UK546977401558

NuEra T14 0156



ANGUS



PROGENY OF NuEra T14 0156

NUERA T14 0156

EAR TAG: UK704149701066 **GENUS ABS CODE:** AA1730 **NAAB CODE:** 829XB0156
SIRE: SPRINGFIELD RAMESSES 6124 **DAM:** WOODSIDE RITA 4P74 OF 1351 **MGS:** G A R PROPHET
USE EAR TAG NUMBER TO REGISTER CALVES: UK704149701066 **PROGENY FROM THIS SIRE ARE NOT ELIGIBLE FOR PEDIGREE USE**

BEEFADVANTAGE™ £86.20

GENUS BEEF CALVING SURVEY ON DAIRY COWS ONLY

| | 70 BSI | 100 BSI | 130 BSI | GENUS ABS BREED AV. | PROVEN STATISTIC |
|------------------------|--------|---------|---------|---------------------|------------------|
| Calving Ease (heifers) | | | 130 | 4.9% | 1.6% |
| Calving Ease (cows) | | | 128 | 1.5% | 0.4% |
| Gestation Length | | 116 | | 282 days | 280 days |
| Calf Quality | | | 130 | 52% | 64% |
| Calf Survivability | | | 130 | 3.6% | 0.2% |

BEEFADVANTAGE™ £62.12

GENUS BEEF CALVING SURVEY ON DAIRY COWS ONLY

| | 70 BSI | 100 BSI | 130 BSI | GENUS ABS BREED AV. | PROVEN STATISTIC |
|------------------------|--------|---------|---------|---------------------|------------------|
| Calving Ease (heifers) | | | 130 | 4.9% | 1.1% |
| Calving Ease (cows) | | | 130 | 1.5% | 0.3% |
| Gestation Length | | 116 | | 282 days | 280 days |
| Calf Quality | | | 128 | 52% | 58% |
| Calf Survivability | | | 130 | 3.6% | 1.8% |

NuEra T14 0191



ANGUS



PROGENY OF NuEra T14 0191

NUERA T14 0191

EAR TAG: 20167267(US)46 **GENUS ABS CODE:** AA1853 **NAAB CODE:** 829XB0191
SIRE: BAR R JET BLACK 5063 **DAM:** HEDGEWOOD ISABEL 317 **MGS:** BALDRIDGE WAYLON W34

USE EAR TAG NUMBER TO REGISTER CALVES: 20167267(US)46 **PROGENY FROM THIS SIRE ARE NOT ELIGIBLE FOR PEDIGREE USE**

BEEFADVANTAGE™ £73.61

GENUS BEEF CALVING SURVEY ON DAIRY COWS ONLY

| | 70 BSI | 100 BSI | 130 BSI | GENUS ABS BREED AV. | PROVEN STATISTIC |
|------------------------|--------|---------|---------|---------------------|------------------|
| Calving Ease (heifers) | | | 130 | 4.9% | 0.5% |
| Calving Ease (cows) | | | 130 | 1.5% | 0.4% |
| Gestation Length | | | 130 | 282 days | 279 days |
| Calf Quality | | 116 | | 52% | 60% |
| Calf Survivability | | | 130 | 3.6% | 1.2% |

NuEra T14 0072



ANGUS



PROGENY OF NuEra T14 0072

NUERA T14 0072

EAR TAG: 19605121(US)44 **GENUS ABS CODE:** AA1702 **NAAB CODE:** 829XB0072
SIRE: BASIN PAYWEIGHT 1682 **DAM:** COX W34 WAYLON 5047 **MGS:** BALDRIDGE WAYLON W34

USE EAR TAG NUMBER TO REGISTER CALVES: 19605121(US)44 **PROGENY FROM THIS SIRE ARE NOT ELIGIBLE FOR PEDIGREE USE**

BEEFADVANTAGE™ £57.60

GENUS BEEF CALVING SURVEY ON DAIRY COWS ONLY

| | 70 BSI | 100 BSI | 130 BSI | GENUS ABS BREED AV. | PROVEN STATISTIC |
|------------------------|--------|---------|---------|---------------------|------------------|
| Calving Ease (heifers) | | | 130 | 4.9% | 2.8% |
| Calving Ease (cows) | | | 128 | 1.5% | 0.4% |
| Gestation Length | | 108 | | 282 days | 281 days |
| Calf Quality | | | 128 | 52% | 59% |
| Calf Survivability | | | 130 | 3.6% | 2.0% |

SKAILL DALTON



ANGUS

NuEra T14 0142



ANGUS



PROGENY OF SKAILL DALTON



SKAILL DALTON

EAR TAG: UK523853 604214 **GENUS ABS CODE:** AA1837 **NAAB CODE:** 829AN2235
SIRE: QUAKER HILL BLINDSIDE SGR **DAM:** SKAILL DIANA U904 **MGS:** RAWBURN JACKSON ERIC P967
USE EAR TAG NUMBER TO REGISTER CALVES: UK523853 604214



NUERA T14 0142

EAR TAG: 19801316(US)45 **GENUS ABS CODE:** AA1750 **NAAB CODE:** 829XB0142
SIRE: SPRINGFIELD RAMESSES 6124 **DAM:** NUERA T14 E0851 **MGS:** R5 MONUMENT 087
USE EAR TAG NUMBER TO REGISTER CALVES: 19801316(US)45 PROGENY FROM THIS SIRE ARE NOT ELIGIBLE FOR PEDIGREE USE

BEEFADVANTAGE™ £44.02

GENUS BEEF CALVING SURVEY ON DAIRY COWS ONLY

| | 70 BSI | 100 BSI | 130 BSI | GENUS ABS BREED AV. | PROVEN STATISTIC |
|---------------------|--------|---------|---------|---------------------|------------------|
| Calving Ease (cows) | | 112 | | 1.5% | 0.8% |
| Gestation Length | 91 | | | 282 days | 284 days |
| Calf Quality | | | 130 | 52% | 60% |
| Calf Survivability | | 116 | | 3.6% | 2.2% |

BEEFADVANTAGE™ £40.10

GENUS BEEF CALVING SURVEY ON DAIRY COWS ONLY

| | 70 BSI | 100 BSI | 130 BSI | GENUS ABS BREED AV. | PROVEN STATISTIC |
|------------------------|--------|---------|---------|---------------------|------------------|
| Calving Ease (heifers) | | | 130 | 4.9% | 0.5% |
| Calving Ease (cows) | 103 | 103 | | 1.5% | 1.4% |
| Gestation Length | | 108 | | 282 days | 281 days |
| Calf Quality | | | 130 | 52% | 62% |
| Calf Survivability | 72 | | | 3.6% | 5.7% |

NuEra T14 0155



ANGUS

NuEra T14 0144



ANGUS



PROGENY OF NuEra T14 0155

NUERA T14 0155

EAR TAG: UK704149701073 **GENUS ABS CODE:** AA1729 **NAAB CODE:** 829XB0155
SIRE: SPRINGFIELD RAMESSES 6124 **DAM:** WOODSIDE RITA 4P74 OF 1351 **MGS:** R5 MONUMENT 087
USE EAR TAG NUMBER TO REGISTER CALVES: UK704149701073 PROGENY FROM THIS SIRE ARE NOT ELIGIBLE FOR PEDIGREE USE



PROGENY OF NuEra T14 0144

NUERA T14 0144

EAR TAG: 19801314(US)45 **GENUS ABS CODE:** AA1749 **NAAB CODE:** 829XB0144
SIRE: SPRINGFIELD RAMESSES 6124 **DAM:** NUERA T14 E0851 **MGS:** R5 MONUMENT
USE EAR TAG NUMBER TO REGISTER CALVES: 19801314(US)45 PROGENY FROM THIS SIRE ARE NOT ELIGIBLE FOR PEDIGREE USE

BEEFADVANTAGE™ £43.62

GENUS BEEF CALVING SURVEY ON DAIRY COWS ONLY

| | 70 BSI | 100 BSI | 130 BSI | GENUS ABS BREED AV. | PROVEN STATISTIC |
|------------------------|--------|---------|---------|---------------------|------------------|
| Calving Ease (heifers) | | | 130 | 4.9% | 0.5% |
| Calving Ease (cows) | | 122 | | 1.5% | 0.6% |
| Gestation Length | | 108 | | 282 days | 281 days |
| Calf Quality | | | 124 | 52% | 58% |
| Calf Survivability | | 106 | | 3.6% | 3.3% |

BEEFADVANTAGE™ £32.24

GENUS BEEF CALVING SURVEY ON DAIRY COWS ONLY

| | 70 BSI | 100 BSI | 130 BSI | GENUS ABS BREED AV. | PROVEN STATISTIC |
|------------------------|--------|---------|---------|---------------------|------------------|
| Calving Ease (heifers) | | | 130 | 4.9% | 0.5% |
| Calving Ease (cows) | | 128 | | 1.5% | 0.4% |
| Gestation Length | | 100 | | 282 days | 282 days |
| Calf Quality | | | 104 | 52% | 53% |
| Calf Survivability | | | 130 | 3.6% | 1.2% |

MILLBRAE BLACK JACKDAW



PROGENY OF JACKDAW

JACKDAW PRODUCES SOME PROGENY WITH WHITE MARKINGS ON BODY, TAIL, FEET. HE IS MOST SUITED TO INTEGRATED SUPPLY CHAINS

MILLBRAE BLACK JACKDAW

EAR TAG: UK918195202725 **GENUS ABS CODE:** AA1553 **NAAB CODE:** 29AN2068

SIRE: LILEY EDD M021 **DAM:** MILLBRAE BLACKBIRD P622 **MGS:** NETHERALLAN PETER PERSHORE E052

USE EAR TAG NUMBER TO REGISTER CALVES: UK918195202725 PROGENY FROM THIS SIRE ARE NOT ELIGIBLE FOR PEDIGREE USE



BEEFADVANTAGE™ £21.52
GENUS BEEF CALVING SURVEY ON DAIRY COWS ONLY

Calvings 282 **Herds** 106 **Reliability** ★★★★★

| | 70 BSI | 100 BSI | 130 BSI | GENUS ABS BREED AV. | PROVEN STATISTIC |
|------------------------|--------|---------|---------|---------------------|------------------|
| Calving Ease (heifers) | 82 | 130 | | 4.9% | 6.4% |
| Calving Ease (cows) | 78 | 120 | | 1.5% | 2.4% |
| Gestation Length | 84 | 106 | | 282 days | 284 days |
| Calf Quality | | | 130 | 52% | 65% |
| Calf Survivability | 80 | 130 | | 3.6% | 5.2% |

SKAILL EMPEROR



PROGENY OF SKAILL EMPEROR



SKAILL EMPEROR

EAR TAG: UK523853 404233 **GENUS ABS CODE:** AA1839 **NAAB CODE:** 829AN2234

SIRE: QUAKER HILL BLINDSIDE SGR **DAM:** SKAILL ERROLLINE **MGS:** MILLAH MURRAH KINGDOM

USE EAR TAG NUMBER TO REGISTER CALVES: UK523853 404233

BEEFADVANTAGE™ £18.56
GENUS BEEF CALVING SURVEY ON DAIRY COWS ONLY

Calvings 166 **Herds** 42 **Reliability** ★★★★★

| | 70 BSI | 100 BSI | 130 BSI | GENUS ABS BREED AV. | PROVEN STATISTIC |
|------------------------|--------|---------|---------|---------------------|------------------|
| Calving Ease (heifers) | | | 130 | 4.9% | 0.1% |
| Calving Ease (cows) | | 113 | | 1.5% | 1% |
| Gestation Length | | 106 | | 282 days | 281 days |
| Calf Quality | 96 | 130 | | 52% | 51% |
| Calf Survivability | | | 130 | 3.6% | 1.3% |

GAME CHANGER

An industry-leading integrated beef supply chain from Sainsbury's and ABP.

DELIVERING BRITISH DAIRY AND BEEF PRODUCERS GREATER SECURITY AND STABILITY.

DAIRY FARMERS

- Stable calf income
- Fixed forward calf price
- Industry-leading, proven beef on dairy sires
- Regular farm collections
- No commission fees

REARERS

- Stand alone enterprise
- Guaranteed regular income
- No capital outlay
- Dedicated support team

FINISHERS

- High health status animals
- No capital outlay
- Locked in lifetime price
- Industry-leading genetics
- FREE farm management software

Become a Gamechanger at www.gamechangerintegratedbeef.com

Or call the Blade Farming office - 01458 259413



NEWPOLE KOJAK



BRITISH BLUE

NUERA OPTIMUS PRIME



BRITISH BLUE



PROGENY OF KOJAK



NEWPOLE KOJAK

EAR TAG: UK704149100864 GENUS ABS CODE: BB1469 NAAB CODE: 29BB0089

SIRE: NEWPOLE EASY DAM: NEWPOLE HARRIET MGS: AUCHENLAY ECHO

USE EAR TAG NUMBER TO REGISTER CALVES: UK704149100864 PROGENY FROM THIS SIRE ARE NOT ELIGIBLE FOR PEDIGREE USE



PROGENY OF OPTIMUS PRIME



NUERA OPTIMUS PRIME

EAR TAG: UK706042705265 GENUS ABS CODE: BB1831 NAAB CODE: 829BB0176

SIRE: IMMENSE ET 0738 DE BEAURAING DAM: BLUE MIST INCA MGS: BRINGLEE ECSTASY

USE EAR TAG NUMBER TO REGISTER CALVES: UK706042705265 PROGENY FROM THIS SIRE ARE NOT ELIGIBLE FOR PEDIGREE USE



BEEFADVANTAGE™ £86.94

GENUS BEEF CALVING SURVEY ON DAIRY COWS ONLY

Calvings 176 Herds 74 Reliability ★★☆☆

| | 70 BSI | 100 BSI | 130 BSI | GENUS ABS BREED AV. | PROVEN STATISTIC |
|---------------------|--------|---------|---------|---------------------|------------------|
| Calving Ease (cows) | | | 130 | 3.0% | 0.2% |
| Gestation Length | | | 124 | 283 days | 280 days |
| Calf Quality | | | 130 | 53% | 63% |
| Calf Survivability | | | 130 | 4.3% | 1.4% |

BEEFADVANTAGE™ £84.20

GENUS BEEF CALVING SURVEY ON DAIRY COWS ONLY

Calvings 111 Herds 36 Reliability ★★

| | 70 BSI | 100 BSI | 130 BSI | GENUS ABS BREED AV. | PROVEN STATISTIC |
|---------------------|--------|---------|---------|---------------------|------------------|
| Calving Ease (cows) | | | 130 | 3.0% | 0.1% |
| Gestation Length | | 100 | | 283 days | 283 days |
| Calf Quality | | | 130 | 53% | 68% |
| Calf Survivability | | 114 | | 4.3% | 4% |

FOREST NORTHPOLE

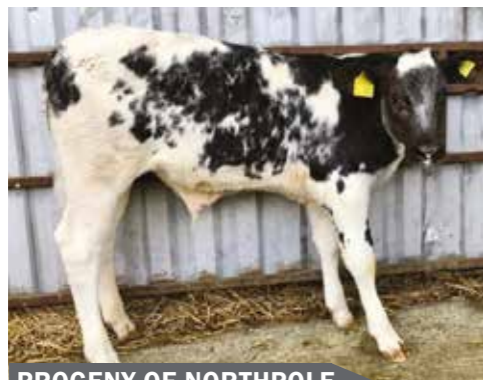


BRITISH BLUE

MAES NUMBER ONE



BRITISH BLUE



PROGENY OF NORTHPOLE



FOREST NORTHPOLE

EAR TAG: UK700436600191 GENUS ABS CODE: BB1709 NAAB CODE: 29BB0165

SIRE: REDMIRESS ISSAC DAM: TY ISAF EBRILL MGS: HAZELWOOD KING

USE EAR TAG NUMBER TO REGISTER CALVES: UK700436600191 PROGENY FROM THIS SIRE ARE NOT ELIGIBLE FOR PEDIGREE USE



PROGENY OF NUMBER ONE



MAES NUMBER ONE

EAR TAG: UK706356700104 GENUS ABS CODE: BB1727 NAAB CODE: 29BB0171

SIRE: TENACE DE LA PRAULE DAM: RIDGE DEAN JASMINE MGS: KILOWATT D'OCHAIN

USE EAR TAG NUMBER TO REGISTER CALVES: UK706356700104 PROGENY FROM THIS SIRE ARE NOT ELIGIBLE FOR PEDIGREE USE



BEEFADVANTAGE™ £86.74

GENUS BEEF CALVING SURVEY ON DAIRY COWS ONLY

Calvings 254 Herds 72 Reliability ★★★★★

| | 70 BSI | 100 BSI | 130 BSI | GENUS ABS BREED AV. | PROVEN STATISTIC |
|---------------------|--------|---------|---------|---------------------|------------------|
| Calving Ease (cows) | | | 130 | 3.0% | 1.0% |
| Gestation Length | | | 130 | 283 days | 279 days |
| Calf Quality | | | 128 | 53% | 62% |
| Calf Survivability | | | 130 | 4.3% | 2.0% |



BEEFADVANTAGE™ £80.81

GENUS BEEF CALVING SURVEY ON DAIRY COWS ONLY

Calvings 201 Herds 64 Reliability ★★★★★

| | 70 BSI | 100 BSI | 130 BSI | GENUS ABS BREED AV. | PROVEN STATISTIC |
|---------------------|--------|---------|---------|---------------------|------------------|
| Calving Ease (cows) | | | 130 | 3.0% | 0.9% |
| Gestation Length | | 108 | | 283 days | 282 days |
| Calf Quality | | | 130 | 53% | 65% |
| Calf Survivability | | | 130 | 4.3% | 1.7% |

NUERA NIGHTRIDER



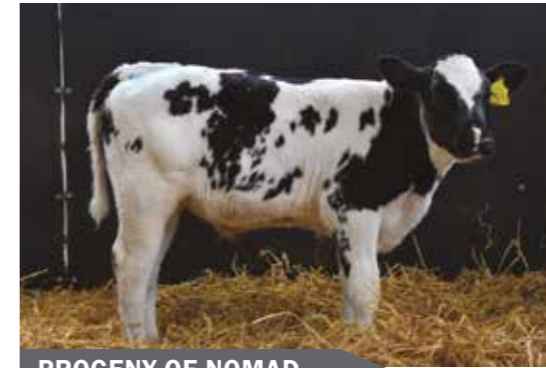
PROGENY OF NIGHTRIDER

NUERA NIGHTRIDER

EAR TAG: UK706042104356 **GENUS ABS CODE:** BB1656 **NAAB CODE:** 29BB0135
SIRE: NEWPOLE EASY **DAM:** NEWPOLE JUST A MINUTE **MGS:** PANACHE DE CENTFONTAINE

USE EAR TAG NUMBER TO REGISTER CALVES: UK706042104356 **PROGENY FROM THIS SIRE ARE NOT ELIGIBLE FOR PEDIGREE USE**

GREYSTONE NOMAD



PROGENY OF NOMAD

GREYSTONE NOMAD

EAR TAG: UK125185600391 **GENUS ABS CODE:** BB1748 **NAAB CODE:** 829BB0183
SIRE: GREYSTONE GOVERNOR **DAM:** GREYSTONE KORKY **MGS:** GREYSTONE ARTIC

USE EAR TAG NUMBER TO REGISTER CALVES: UK125185600391 **PROGENY FROM THIS SIRE ARE NOT ELIGIBLE FOR PEDIGREE USE**

FERTILITY ADVANTAGE GOLD +£20.00

BEEFADVANTAGE™ £78.59

GENUS BEEF CALVING SURVEY ON DAIRY COWS ONLY

Calvings 178 Herds 61 Reliability ★★★

| | 70 BSI | 100 BSI | 130 BSI | GENUS ABS BREED AV. | PROVEN STATISTIC |
|---------------------|--------|---------|---------|---------------------|------------------|
| Calving Ease (cows) | | 126 | | 3.0% | 1.3% |
| Gestation Length | | 116 | | 283 days | 282 days |
| Calf Quality | | | 130 | 53% | 66% |
| Calf Survivability | | | 130 | 4.3% | 2.6% |

FERTILITY ADVANTAGE SILVER +£3.00

BEEFADVANTAGE™ £76.50

GENUS BEEF CALVING SURVEY ON DAIRY COWS ONLY

Calvings 268 Herds 83 Reliability★★★★

| | 70 BSI | 100 BSI | 130 BSI | GENUS ABS BREED AV. | PROVEN STATISTIC |
|---------------------|--------|---------|---------|---------------------|------------------|
| Calving Ease (cows) | | 111 | | 3.0% | 2.3% |
| Gestation Length | | 116 | | 283 days | 281 days |
| Calf Quality | | | 130 | 53% | 64% |
| Calf Survivability | | | 130 | 4.3% | 1.0% |

MAES OSBORNE



PROGENY OF OSBOURNE

MAES OSBORNE

EAR TAG: UK706356300128 **GENUS ABS CODE:** BB1750 **NAAB CODE:** 829BB0182
SIRE: ATTRIBUT DU FOND DE BOIS **DAM:** RIDGE DEAN JASMINE **MGS:** KILOWATT D'OCHAIN

USE EAR TAG NUMBER TO REGISTER CALVES: UK706356300128 **PROGENY FROM THIS SIRE ARE NOT ELIGIBLE FOR PEDIGREE USE**

FERTILITY ADVANTAGE GOLD +£20.00

BEEFADVANTAGE™ £77.38

GENUS BEEF CALVING SURVEY ON DAIRY COWS ONLY

Calvings 143 Herds 43 Reliability★★★

| | 70 BSI | 100 BSI | 130 BSI | GENUS ABS BREED AV. | PROVEN STATISTIC |
|---------------------|--------|---------|---------|---------------------|------------------|
| Calving Ease (cows) | | 109 | | 3.0% | 2.4% |
| Gestation Length | | 108 | | 283 days | 282 days |
| Calf Quality | | | 130 | 53% | 70% |
| Calf Survivability | | 102 | | 4.3% | 4.2% |

CROFTENDS MONTY



PROGENY OF MONTY

CROFTENDS MONTY

EAR TAG: UK704149700933 **GENUS ABS CODE:** BB1564 **NAAB CODE:** 29BB0113
SIRE: BROOKFIELD DEV **DAM:** CROFTENDS JESS **MGS:** TAMHORN SUMO

USE EAR TAG NUMBER TO REGISTER CALVES: UK704149700933 **PROGENY FROM THIS SIRE ARE NOT ELIGIBLE FOR PEDIGREE USE**

FERTILITY ADVANTAGE PLATINUM +£34.00

BEEFADVANTAGE™ £74.46

GENUS BEEF CALVING SURVEY ON DAIRY COWS ONLY

Calvings 140 Herds 55 Reliability★★★

| | 70 BSI | 100 BSI | 130 BSI | GENUS ABS BREED AV. | PROVEN STATISTIC |
|---------------------|--------|---------|---------|---------------------|------------------|
| Calving Ease (cows) | | 103 | | 3.0% | 2.8% |
| Gestation Length | | 116 | | 283 days | 281 days |
| Calf Quality | | | 130 | 53% | 68% |
| Calf Survivability | | 114 | | 4.3% | 3.6% |

QUARRY BANK MONEYMAN



PROGENY OF MONEYMAN

QUARRY BANK MONEYMAN

EAR TAG: UK704149100927 GENUS ABS CODE: BB1565 NAAB CODE: 29BB0108
SIRE: BROOKFIELD DEV DAM: QUARRY BANK GAIL MGS: WOODBINE WARRIOR

USE EAR TAG NUMBER TO REGISTER CALVES: UK704149100927 PROGENY FROM THIS SIRE ARE NOT ELIGIBLE FOR PEDIGREE USE

BEEFADVANTAGE™ £72.65
GENUS BEEF CALVING SURVEY ON DAIRY COWS ONLY

| | 70 BSI | 100 BSI | 130 BSI | GENUS ABS BREED AV. | PROVEN STATISTIC |
|---------------------|--------|---------|---------|---------------------|------------------|
| Calving Ease (cows) | | | 130 | 3.0% | 0.2% |
| Gestation Length | | | 130 | 283 days | 279 days |
| Calf Quality | | 112 | | 53% | 57% |
| Calf Survivability | | | 130 | 4.3% | 1.6% |

NUERA ORACLE



PROGENY OF ORACLE

NUERA ORACLE

EAR TAG: UK706042205260 GENUS ABS CODE: BB1830 NAAB CODE: 829BB0174
SIRE: IMMENSE ET 0738 DE BEAURAING DAM: BLUE MIST INCA MGS: BRINGLEE ECSTASY

USE EAR TAG NUMBER TO REGISTER CALVES: UK706042205260 PROGENY FROM THIS SIRE ARE NOT ELIGIBLE FOR PEDIGREE USE

BEEFADVANTAGE™ £68.82
GENUS BEEF CALVING SURVEY ON DAIRY COWS ONLY

| | 70 BSI | 100 BSI | 130 BSI | GENUS ABS BREED AV. | PROVEN STATISTIC |
|---------------------|--------|---------|---------|---------------------|------------------|
| Calving Ease (cows) | | | 115 | 3.0% | 2% |
| Gestation Length | | | 116 | 283 days | 281 days |
| Calf Quality | | | 129 | 53% | 63% |
| Calf Survivability | | | 130 | 4.3% | 2% |

GREYSTONE OXFORD



PROGENY OF OXFORD

GREYSTONE OXFORD

EAR TAG: UK125185600412 GENUS ABS CODE: BB1815 NAAB CODE: 829BB0217
SIRE: BONBERBO POWER HOUSE DAM: GREYSTONE GLEAM MGS: GREYSTONE ATOMIC

USE EAR TAG NUMBER TO REGISTER CALVES: UK125185600412 PROGENY FROM THIS SIRE ARE NOT ELIGIBLE FOR PEDIGREE USE

BEEFADVANTAGE™ £71.60
GENUS BEEF CALVING SURVEY ON DAIRY COWS ONLY

| | 70 BSI | 100 BSI | 130 BSI | GENUS ABS BREED AV. | PROVEN STATISTIC |
|---------------------|--------|---------|---------|---------------------|------------------|
| Calving Ease (cows) | | 100 | | 3.0% | 3.0% |
| Gestation Length | | | 116 | 283 days | 281 days |
| Calf Quality | | | 130 | 53% | 69% |
| Calf Survivability | | 100 | | 4.3% | 4% |

BIRSEMHR NANDO



PROGENY OF NANDO

BIRSEMHR NANDO

EAR TAG: UK521014300122 GENUS ABS CODE: BB1676 NAAB CODE: 29BB0148
SIRE: WILDGE ULEX DAM: BIRSEMHR KITKAT MGS: COLOS VAN DAISEL

USE EAR TAG NUMBER TO REGISTER CALVES: UK521014300122 PROGENY FROM THIS SIRE ARE NOT ELIGIBLE FOR PEDIGREE USE

BEEFADVANTAGE™ £61.00
GENUS BEEF CALVING SURVEY ON DAIRY COWS ONLY

| | 70 BSI | 100 BSI | 130 BSI | GENUS ABS BREED AV. | PROVEN STATISTIC |
|---------------------|--------|---------|---------|---------------------|------------------|
| Calving Ease (cows) | 79 | | | 3.0% | 4.0% |
| Gestation Length | | | 124 | 283 days | 280 days |
| Calf Quality | | | 130 | 53% | 67% |
| Calf Survivability | | 110 | | 4.3% | 4.0% |

NEWPOLE LANCER



BRITISH BLUE

NUERA T15 P0207 (P)

BRITISH BLUE



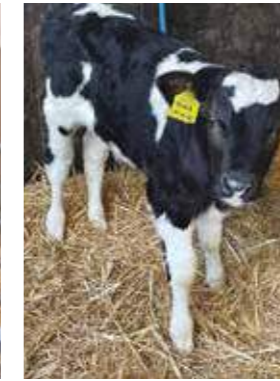
PROGENY OF LANCER



NEWPOLE LANCER

EAR TAG: UK704149600883 GENUS ABS CODE: BB1502 NAAB CODE: 29BB0097
SIRE: BROOKFIELD DEV DAM: NEWPOLE HARRIET MGS: AUCHENLAY ECHO

USE EAR TAG NUMBER TO REGISTER CALVES: UK704149600883 PROGENY FROM THIS SIRE ARE NOT ELIGIBLE FOR PEDIGREE USE



NUERA T15 P0207

EAR TAG: UK706356700160 GENUS ABS CODE: BB1860 NAAB CODE: 829B70207
SIRE: IDEALE DEHORNER DAM: TOPSIDE LASS MGS: NABY GOLDDUST

USE EAR TAG NUMBER TO REGISTER CALVES: UK706356700160 PROGENY FROM THIS SIRE ARE NOT ELIGIBLE FOR PEDIGREE USE

P0207 IS THE FIRST HOMOZYGOUS POLLED BRITISH BLUE SIRE TO GRADUATE FROM OUR PROGRAMME WITH PROVEN DATA. THIS MEANS HIS RESULTING PROGENY WILL BE BORN WITH NO HORNS. HE CONSISTENTLY PRODUCES BLACK OR BLACK & WHITE PROGENY.



BEEFADVANTAGE™ £59.90
GENUS BEEF CALVING SURVEY ON DAIRY COWS ONLY

Calvings 119 Herds 53 Reliability ★★

| | 70 BSI | 100 BSI | 130 BSI | GENUS ABS BREED AV. | PROVEN STATISTIC |
|---------------------|--------|---------|---------|---------------------|------------------|
| Calving Ease (cows) | | | 123 | 3.0% | 1.5% |
| Gestation Length | | 108 | | 283 days | 282 days |
| Calf Quality | | | 124 | 53% | 61% |
| Calf Survivability | | | 130 | 4.3% | 2.1% |

BEEFADVANTAGE™ £57.96
GENUS BEEF CALVING SURVEY ON DAIRY COWS ONLY

Calvings 137 Herds 34 Reliability ★★★

| | 70 BSI | 100 BSI | 130 BSI | GENUS ABS BREED AV. | PROVEN STATISTIC |
|---------------------|--------|---------|---------|---------------------|------------------|
| Calving Ease (cows) | | 103 | | 3.0% | 2.8% |
| Gestation Length | | | 116 | 283 days | 281 days |
| Calf Quality | | | 124 | 53% | 61% |
| Calf Survivability | | | 130 | 4.3% | 1.7% |

NEWPOLE PATRIOT

BRITISH BLUE

NEWPOLE KOWTOW



BRITISH BLUE



PROGENY OF PATRIOT

NEWPOLE PATRIOT

EAR TAG: UK344206700227 GENUS ABS CODE: BB1841 NAAB CODE: 829BB0230
SIRE: GRAPHITE DE DESSOUS LA VILLE DAM: NEWPOLE HARRIET MGS: AUCHENLAY ECHO

USE EAR TAG NUMBER TO REGISTER CALVES: UK344206700227 PROGENY FROM THIS SIRE ARE NOT ELIGIBLE FOR PEDIGREE USE



PROGENY OF KOWTOW

NEWPOLE KOWTOW

EAR TAG: UK704149200865 GENUS ABS CODE: BB1470 NAAB CODE: 29BB0088
SIRE: NEWPOLE EASY DAM: NEWPOLE HARRIET MGS: AUCHENLAY ECHO

USE EAR TAG NUMBER TO REGISTER CALVES: UK704149200865 PROGENY FROM THIS SIRE ARE NOT ELIGIBLE FOR PEDIGREE USE



BEEFADVANTAGE™ £59.30
GENUS BEEF CALVING SURVEY ON DAIRY COWS ONLY

Calvings 102 Herds 47 Reliability ★★

| | 70 BSI | 100 BSI | 130 BSI | GENUS ABS BREED AV. | PROVEN STATISTIC |
|---------------------|--------|---------|---------|---------------------|------------------|
| Calving Ease (cows) | | | 127 | 3.0% | 1.0% |
| Gestation Length | | | 130 | 283 days | 279 days |
| Calf Quality | | | 117 | 53% | 59% |
| Calf Survivability | | | 107 | 4.3% | 4% |



BEEFADVANTAGE™ £58.79
GENUS BEEF CALVING SURVEY ON DAIRY COWS ONLY

Calvings 163 Herds 61 Reliability ★★★

| | 70 BSI | 100 BSI | 130 BSI | GENUS ABS BREED AV. | PROVEN STATISTIC |
|---------------------|--------|---------|---------|---------------------|------------------|
| Calving Ease (cows) | | | 121 | 3.0% | 1.6% |
| Gestation Length | | 100 | | 283 days | 283 days |
| Calf Quality | | | 124 | 53% | 61% |
| Calf Survivability | | | 130 | 4.3% | 1.5% |

NUERA T15 P0180



BRITISH BLUE



PROGENY OF T15 P0180



NUERA T15 P0180

EAR TAG: UK706042405388 GENUS ABS CODE: BB1868 NAAB CODE: 829BB0180

SIRE: NEWPOLE KYOTE DAM: CROFTENDS DELIGHT MGS: CROFTENDS BRUNO

USE EAR TAG NUMBER TO REGISTER CALVES: UK706042405388 PROGENY FROM THIS SIRE ARE NOT ELIGIBLE FOR PEDIGREE USE

BEEFADVANTAGE™ £49.12

GENUS BEEF CALVING SURVEY ON DAIRY COWS ONLY

| | 70 BSI | 100 BSI | 130 BSI | GENUS ABS BREED AV. | PROVEN STATISTIC |
|---------------------|--------|---------|---------|---------------------|------------------|
| Calving Ease (cows) | | 109 | | 3.0% | 2.4% |
| Gestation Length | | 100 | | 283 days | 283 days |
| Calf Quality | | | 128 | 53% | 62% |
| Calf Survivability | | | 130 | 4.3% | 2.5% |

Calvings 336 Herds 81 Reliability ★★★★★

NUERA MILESTONE



BRITISH BLUE



PROGENY OF MILESTONE



NUERA MILESTONE

EAR TAG: UK706042204343 GENUS ABS CODE: BB1640 NAAB CODE: 29BB0134

SIRE: NEWPOLE HEARTHROB DAM: REDMIRES KIWI MGS: MOORSLEY ANDERSON

USE EAR TAG NUMBER TO REGISTER CALVES: UK706042204343 PROGENY FROM THIS SIRE ARE NOT ELIGIBLE FOR PEDIGREE USE



BEEFADVANTAGE™ £37.00

GENUS BEEF CALVING SURVEY ON DAIRY COWS ONLY

| | 70 BSI | 100 BSI | 130 BSI | GENUS ABS BREED AV. | PROVEN STATISTIC |
|---------------------|--------|---------|---------|---------------------|------------------|
| Calving Ease (cows) | | 100 | | 3.0% | 3.0% |
| Gestation Length | | 100 | | 283 days | 283 days |
| Calf Quality | | | 130 | 53% | 65% |
| Calf Survivability | | | 92 | 4.3% | 5.0% |

Calvings 134 Herds 51 Reliability ★★★

NUERA MAGNUM



BRITISH BLUE



PROGENY OF MAGNUM

NUERA MAGNUM

EAR TAG: UK706042704341 GENUS ABS CODE: BB1639 NAAB CODE: 29BB0126

SIRE: NEWPOLE EASY DAM: NEWPOLE JUST A MINUTE MGS: PANACHE DE DE CENTFONTAINE

USE EAR TAG NUMBER TO REGISTER CALVES: UK706042704341 PROGENY FROM THIS SIRE ARE NOT ELIGIBLE FOR PEDIGREE USE

BEEFADVANTAGE™ £38.68

GENUS BEEF CALVING SURVEY ON DAIRY COWS ONLY

| | 70 BSI | 100 BSI | 130 BSI | GENUS ABS BREED AV. | PROVEN STATISTIC |
|---------------------|--------|---------|---------|---------------------|------------------|
| Calving Ease (cows) | | 121 | | 3.0% | 1.6% |
| Gestation Length | | 100 | | 283 days | 283 days |
| Calf Quality | | | 115 | 53% | 58% |
| Calf Survivability | | | 128 | 4.3% | 2.9% |

Calvings 129 Herds 49 Reliability ★★★

NUERA T15 P0201



BRITISH BLUE



PROGENY OF NUERA T15 P0201



NUERA T15 P0201

EAR TAG: UK706042505438 GENUS ABS CODE: BB1863 NAAB CODE: 829BB0201

SIRE: GIGA DU BOIS DE REMONT DAM: GREYSTONE JASMINE MGS: GREYSTONE GOVERNOR

USE EAR TAG NUMBER TO REGISTER CALVES: UK706042505438 PROGENY FROM THIS SIRE ARE NOT ELIGIBLE FOR PEDIGREE USE

BEEFADVANTAGE™ £21.67

GENUS BEEF CALVING SURVEY ON DAIRY COWS ONLY

| | 70 BSI | 100 BSI | 130 BSI | GENUS ABS BREED AV. | PROVEN STATISTIC |
|---------------------|--------|---------|---------|---------------------|------------------|
| Calving Ease (cows) | | 130 | | 3.0% | 1% |
| Gestation Length | | | 116 | 283 days | 281 days |
| Calf Quality | | | 92 | 53% | 50% |
| Calf Survivability | | | 114 | 4.3% | 3.6% |

Calvings 161 Herds 51 Reliability ★★★



PROGENY OF OGI OGI



GELLAN OGI OGI

EAR TAG: UK700921500054 **GENUS ABS CODE:** BB1758 **NAAB CODE:** 829BB0188
SIRE: NEWPOLE HEARTTHROB **DAM:** DRAGONS BLUES DOLLY **MGS:** EMPIRE D'OCHAIN

USE EAR TAG NUMBER TO REGISTER CALVES: UK700921500054 **PROGENY FROM THIS SIRE ARE NOT ELIGIBLE FOR PEDIGREE USE**



PROGENY OF PROTEUS



BARWISE 1 PROTEUS (P)

EAR TAG: UK103000200992 **GENUS ABS CODE:** H9323 **NAAB CODE:** 29HP0939
SIRE: BARWISE 1 WELLINGTON (P) **DAM:** BARWISE 1 ROSIE (P) **MGS:** CS BOOMER 29F (P)

USE EAR TAG NUMBER TO REGISTER CALVES: UK103000200992

BEEFADVANTAGE™ £11.32

GENUS BEEF CALVING SURVEY ON DAIRY COWS ONLY



FERTILITY ADVANTAGE SILVER +£3.00

Calvings 142 Herds 50 Reliability ★★★

| | 70 BSI | 100 BSI | 30 BSI | GENUS ABS BREED AV. | PROVEN STATISTIC |
|---------------------|--------|---------|--------|---------------------|------------------|
| Calving Ease (cows) | | | 130 | 3.0% | 0.9% |
| Gestation Length | | 108 | | 283 days | 282 days |
| Calf Quality | 88 | | | 53% | 49% |
| Calf Survivability | | 112 | | 4.3% | 3.7% |

BEEFADVANTAGE™ £42.70

GENUS BEEF CALVING SURVEY ON DAIRY COWS ONLY

Calvings 47 Herds 35 Reliability

| | 70 BSI | 100 BSI | 130 BSI | GENUS ABS BREED AV. | PROVEN STATISTIC |
|---------------------|--------|---------|---------|---------------------|------------------|
| Calving Ease (cows) | | | 130 | 1.3% | 0.2% |
| Gestation Length | | 108 | | 282 days | 281 days |
| Calf Quality | | | 115 | NA | 53% |
| Calf Survivability | | 108 | | 3.2% | 2.8% |

Fertility plus®

"At a current pregnancy rate of 30% on RMS, the Blue Elite mix provides added fertility and genetics that produce calves with great calf quality."

N Evans, Powys
400 cow flying herd been on RMS for 10 years



We offer seven unique Fertility plus® products all offering different qualities to beef and dairy customers but all offering the added fertility benefit:

Fertility plus® BLUE ELITE

Contains semen from the most profitable British Blue sires with superior calf quality and all certified as 'proven' in our beef stud.

Fertility plus® NATIVE

Contains semen from Native breed sires all certified as 'proven' in our beef stud.

Fertility plus® 280

Contains semen from a combination of short gestation sires, averaging 280 days and all certified as 'proven' in our beef stud.

Fertility plus® BRITISH BLUE

Contains semen from the British Blue sires that are above average for calving ease and certified as 'proven' in our beef stud.

Fertility plus® TOP CALF

Contains semen from sires who score an average of 115 BSI for calf quality all certified as 'proven' in our beef stud.

Fertility plus® QUALITY

Contains semen from sires that are Meadow Quality Superior Sires.

Fertility plus® EASY CALVER

Contains semen from three sires that score over 110 BSI for calving ease.



NUERA GENETICS™ GIVING YOU MORE



BRITISH BLUE



£163 additional profitability

NUERA
GENETICS™

ARE BACKED BY OVER
6500 PHENOTYPIC RECORDS
AND OVER **1400** FEED EFFICIENCY RECORDS

UPTO

£163

PROFIT PER HEAD

11%

REDUCTION IN CARBON FOOTPRINT

10%

MORE FEED EFFICIENT

INCREASED DAILY LIVE WEIGHT GAINS

100

DAYS LESS TO SLAUGHTER

ANGUS



£106 additional profitability

Using ABS® Real World Data™, our unique index evaluates progeny performance through finishing to slaughter in a beef cross dairy system and ranks the most profitable genetics within the British Blue and Angus breeds.



To find out more, visit:
www.absglobal.com/uk/nuera-profit-index/

NUERA GENETICS™ - MORE PROFITABLE.

MORE EFFICIENT AND MORE SUSTAINABLE.

FISHER 1 RANCHER (P)



HEREFORD



FISHER 1 RANCHER R483

EAR TAG: UK263027400483 **GENUS ABS CODE:** H9297 **NAAB CODE:** 29HP0944
SIRE: FISHER 1 MIDAS M415 (P) **DAM:** FISHER 1 SUSAN J343(P) **MGS:** YALGOO BOULDER Z250 (P)
USE EAR TAG NUMBER TO REGISTER CALVES: UK263027400483

BEEFADVANTAGE™ £42.10
 GENUS BEEF CALVING SURVEY ON DAIRY COWS ONLY

Calvings 168 Herds 66 Reliability ★★★

| | 70 BSI | 100 BSI | 130 BSI | GENUS ABS BREED AV. | PROVEN STATISTIC |
|---------------------|--------|---------|---------|---------------------|------------------|
| Calving Ease (cows) | 88 | | | 1.3% | 2.0% |
| Gestation Length | 84 | 130 | | 282 days | 284 days |
| Calf Quality | | | 130 | NA | 68% |
| Calf Survivability | | | | 3.2% | 3.0% |

TOMSCHOICE ONSLOW



LIMOUSIN



TOMSCHOICE ONSLOW

EAR TAG: UK124148300477 **GENUS ABS CODE:** LN2792 **NAAB CODE:** 29LN0108
SIRE: MERESIDE LEO **DAM:** TOMSCHOICE ICI **MGS:** KAPRICO ERAVELLE
USE EAR TAG NUMBER TO REGISTER CALVES: UK124148300477
MYOSTATIN INFORMATION: 2 COPIES F94L PROTOPORPHYRIA CARRIER

BEEFADVANTAGE™ £79.40
 GENUS BEEF CALVING SURVEY ON DAIRY COWS ONLY

Calvings 263 Herds 104 Reliability★★★★

| | 70 BSI | 100 BSI | 130 BSI | GENUS ABS BREED AV. | PROVEN STATISTIC |
|---------------------|--------|---------|---------|---------------------|------------------|
| Calving Ease (cows) | | 108 | | 2.4% | 1.9% |
| Gestation Length | | 116 | | 288 days | 286 days |
| Calf Quality | | | 130 | 50% | 76% |
| Calf Survivability | | | 126 | 5.2% | 3.9% |

SOLPOLL 1 SPIKE



HEREFORD



SOLPOLL 1 SPIKE

EAR TAG: UK933001331405 **GENUS ABS CODE:** H9281 **NAAB CODE:** 29HP0949
SIRE: MOESKAER UPGRADE (P) **DAM:** SOLPOLL 1 STARLETT L3 (P) **MGS:** PANMURE 1 HENRY (P)
USE EAR TAG NUMBER TO REGISTER CALVES: UK933001331405

BEEFADVANTAGE™ £70.30
 GENUS BEEF CALVING SURVEY ON DAIRY COWS ONLY

Calvings 34 Herds 11 Reliability★★★

| | 70 BSI | 100 BSI | 130 BSI | GENUS ABS BREED AV. | PROVEN STATISTIC |
|---------------------|--------|---------|---------|---------------------|------------------|
| Calving Ease (cows) | | | 127 | 1.3% | 0.3% |
| Gestation Length | 92 | | | 282 days | 283 days |
| Calf Quality | | | 130 | NA | 65% |
| Calf Survivability | | | 130 | 3.2% | 1% |

TOMSCHOICE NATION



LIMOUSIN



TOMSCHOICE NATION

EAR TAG: UK124148100440 **GENUS ABS CODE:** LN2791 **NAAB CODE:** 29LM0107
SIRE: KAPRICO ERAVELLE **DAM:** TOMSCHOICE IMAGINATION **MGS:** HALTCLIFFE VERMOUNT
USE EAR TAG NUMBER TO REGISTER CALVES: UK124148100440
MYOSTATIN INFORMATION: 2 COPIES F94L PROTOPORPHYRIA CARRIER

BEEFADVANTAGE™ £66.78
 GENUS BEEF CALVING SURVEY ON DAIRY COWS ONLY

Calvings 164 Herds 70 Reliability★★★★

| | 70 BSI | 100 BSI | 130 BSI | GENUS ABS BREED AV. | PROVEN STATISTIC |
|---------------------|--------|---------|---------|---------------------|------------------|
| Calving Ease (cows) | 97 | | | 2.4% | 2.6% |
| Gestation Length | | 116 | | 288 days | 286 days |
| Calf Quality | | | 130 | 50% | 64% |
| Calf Survivability | | | 130 | 5.2% | 3.3% |

TWEEDDALE LENNOX



LIMOUSIN



TWEEDDALE LENNOX

EAR TAG: UK107511701696 **GENUS ABS CODE:** LN2641 **NAAB CODE:** 829LM0104

SIRE: GOLDIES GOLDMINE **DAM:** EMSLIES HELEDD **MGS:** EMSLIES COLOSSUS

USE EAR TAG NUMBER TO REGISTER CALVES: UK107511701696

MYOSTATIN INFORMATION: 2 COPIES F94L PROTOPORPHYRIA CARRIER

BEEFADVANTAGE™ £14.60

GENUS BEEF CALVING SURVEY ON DAIRY COWS ONLY

Calvings 121 Herds 87 Reliability ★★★

| | 70 BSI | 100 BSI | 130 BSI | GENUS ABS BREED AV. | PROVEN STATISTIC |
|---------------------|--------|---------|---------|---------------------|------------------|
| Calving Ease (cows) | 102 | | | 2.4% | 2.3% |
| Gestation Length | 108 | | | 288 days | 287 days |
| Calf Quality | 94 | | | 50% | 48% |
| Calf Survivability | | | 130 | 5.2% | 1.2% |

GARMOUTH KINGSTON



SIMMENTAL



GARMOUTH KINGSTON

EAR TAG: UK523340308113 **GENUS ABS CODE:** SG1340 **NAAB CODE:** 829SM0500

SIRE: DRUMAGARDNER HUGHES **DAM:** GARMOUTH CLOVERS HONEYSUCKLE **MGS:** BEL DHU CAPERCAILLIE

USE EAR TAG NUMBER TO REGISTER CALVES: UK107511701696

BEEFADVANTAGE™ £63.75

GENUS BEEF CALVING SURVEY ON DAIRY COWS ONLY

Calvings 100 Herds 37 Reliability★★

| | 70 BSI | 100 BSI | 130 BSI | GENUS ABS BREED AV. | PROVEN STATISTIC |
|---------------------|--------|---------|---------|---------------------|------------------|
| Calving Ease (cows) | 102 | | | 3.0% | 1.7% |
| Gestation Length | 108 | | | 283 days | 284 days |
| Calf Quality | 94 | | | 53% | 60% |
| Calf Survivability | | | 130 | 4.3% | 2.6% |

DENIZES INFERNO



SIMMENTAL



DENIZES INFERNO 17

EAR TAG: UK181888501775 **GENUS ABS CODE:** SG1292 **NAAB CODE:** 29SM0486

SIRE: DERRYPALLAGHAN ERNEST 13 EX 92 **DAM:** DENIZES FANCY THERESE 4TH **MGS:** ASHLAND TORNADO

USE EAR TAG NUMBER TO REGISTER CALVES: UK181888501775

BEEFADVANTAGE™ £43.90

GENUS BEEF CALVING SURVEY ON DAIRY COWS ONLY

Calvings 44 Herds 23 Reliability

| | 70 BSI | 100 BSI | 130 BSI | GENUS ABS BREED AV. | PROVEN STATISTIC |
|---------------------|--------|---------|---------|---------------------|------------------|
| Calving Ease (cows) | 91 | | | 3.0% | 3.9% |
| Gestation Length | 91 | | | 283 days | 284 days |
| Calf Quality | | | 130 | 53% | 62% |
| Calf Survivability | | | 130 | 4.3% | 5.3% |

CARREG SAINFOIN

LONGHORN



CARREG SAINFOIN

EAR TAG: UK741281100284 **GENUS ABS CODE:** LH0920 **NAAB CODE:** 829TL0007

SIRE: FISHWICK MACVITY **DAM:** CARREG FLORA **MGS:** RACEVIEW KING

USE EAR TAG NUMBER TO REGISTER CALVES: UK741281100284

BEEFADVANTAGE™ £28.60

GENUS BEEF CALVING SURVEY ON DAIRY COWS ONLY

Calvings 45 Herds 4 Reliability

| | 70 BSI | 100 BSI | 130 BSI | GENUS ABS BREED AV. | PROVEN STATISTIC |
|---------------------|--------|---------|---------|---------------------|------------------|
| Calving Ease (cows) | 109 | | | 3.0% | 2.4% |
| Gestation Length | 124 | | | 285 days | 282 days |
| Calf Quality | | | 115 | 53% | 55% |
| Calf Survivability | | | 104 | 3.6% | 3.4% |

CARREG UTAHRAPTOR

LONGHORN



CARREG UTAHRAPTOR

EAR TAG: UK741281400322 **GENUS ABS CODE:** LH0906 **NAAB CODE:** 29TL0009
SIRE: FISHWICK LORD OF THE RINGS **DAM:** CARREG IDLENOT **MGS:** KAPRICO ERAVELLE
USE EAR TAG NUMBER TO REGISTER CALVES: UK741281400322

BEEFADVANTAGE™ £78.91

GENUS BEEF CALVING SURVEY ON DAIRY COWS ONLY

| | 70 BSI | 100 BSI | 130 BSI | GENUS ABS BREED AV. | PROVEN STATISTIC |
|---------------------|--------|---------|---------|---------------------|------------------|
| Calving Ease (cows) | | | 130 | 3.0% | 1.0% |
| Gestation Length | | 116 | | 285 days | 284 days |
| Calf Quality | | | 130 | 53% | 64% |
| Calf Survivability | | | 130 | 3.6% | 0.0% |

Calvings 23 Herds 8 Reliability

ARUBIAL OVERTURE

WAGYU



ARUBIAL OVERTURE N0106

EAR TAG: MYMFN0106 **NAAB CODE:** 29KB0006
SIRE: ITOSHIGENAMI **DAM:** BROOMBEE TERUYAMAMOTO X125 **MGS:** HIRASHIGETAYASU J2351 HONGEN
NOT ELIGIBLE FOR PEDIGREE REGISTRATIONS

BEEFADVANTAGE™ £60.20

GENUS BEEF CALVING SURVEY ON DAIRY COWS ONLY

| | 70 BSI | 100 BSI | 130 BSI | GENUS ABS BREED AV. | PROVEN STATISTIC |
|---------------------|--------|---------|---------|---------------------|------------------|
| Calving Ease (cows) | | | 130 | 2.0% | 1% |
| Gestation Length | | 100 | | 286 days | 286 days |
| Calf Quality | 85 | 108 | | 50% | 48% |
| Calf Survivability | | | 130 | 3.6% | 1.2% |

Calvings 71 Herds 5 Reliability ★



www.warrendale-wagyu.co.uk

www.wagyufarmers.co.uk

WHO ARE WE?

Warrendale Wagyu is a fully integrated supply chain, working with farmers across the country to produce the highest quality British Wagyu Beef. The scheme is flexible, adapting to each individual farm and the way they operate. Warrendale looks for farmers at every stage of the supply chain nationwide, working with forward-thinking dairy farmers to cross full-blood Wagyu genetics to produce a Wagyu cross and collaborating with our grower and finisher farms, we aim to deliver a high-quality carcass, consistently.

GENUS ABS PARTNERSHIP

We work together with Genus ABS who distribute Wagyu genetics onto farm. Genetic selection is crucial, looking for characteristics of good daily liveweight gain, marble score and marble fineness. Our collaboration also allows us work together on DNA testing, sire verification and data collection.

KEY BENEFITS OF OUR SCHEME

- Hardy breed with great temperament
- Full integrated beef scheme
- Annual reviews based on cost of production
- Premiums based on meat quality
- Long-term customer contracts

To find out more about the scheme please email livestock@warrendale-wagyu.co.uk or for more information about the sires available from Genus ABS: 01270 616681



TRAIT LEADERS



CONTINENTAL

| BeefAdvantage | (£) |
|---------------------|--------|
| Newpole Kojak | £86.94 |
| Forest Northpole | £86.74 |
| NuEra Optimus Prime | £84.20 |
| Maes Number One | £80.81 |
| Tomschoice Onslow | £79.36 |

| Calving Ease | (%) |
|----------------------|-----|
| NuEra Optimus Prime | 0 |
| Newpole Kojak | 0.2 |
| Quarry Bank Moneyman | 0.2 |
| Moorsley Mechanic | 0.8 |
| Maes Number One | 0.9 |

| Calf Quality | (%) |
|--------------------|-----|
| Denizes Inferno 17 | 87 |
| Tomschoice Onslow | 76 |
| Maes Osborne | 70 |
| Greystone Oxford | 69 |
| Croftends Monty | 68 |

| Gestation Length | Days |
|----------------------|------|
| Quarry Bank Moneyman | 279 |
| Forest Northpole | 279 |
| Newpole Patriot | 279 |
| Newpole Kojak | 280 |
| NuEra T15 P0201 | 281 |

| Calf Survivability | (%) |
|----------------------|-----|
| Greystone Nomad | 1 |
| Tweeddale Lennox | 1 |
| Newpole Kojak | 1.4 |
| Newpole Kowtow | 1.5 |
| Quarry Bank Moneyman | 1.6 |

NATIVE

| BeefAdvantage | (£) |
|----------------|---------|
| NuEra T14 0136 | £101.49 |
| HW Fletcher | £86.20 |
| NuEra T14 0191 | £73.61 |
| NuEra T14 0156 | £62.12 |
| NuEra T14 0072 | £57.60 |

| Calving Ease | (%) |
|-------------------|-----|
| Barwise 1 Proteus | 0.2 |
| NuEra T14 0156 | 0.3 |
| HW Fletcher | 0.4 |
| NuEra T14 0191 | 0.4 |
| NuEra T14 0072 | 0.4 |

| Calf Quality | (%) |
|------------------------|-----|
| NuEra T14 0136 | 69 |
| Fisher 1 Rancher R483 | 68 |
| Millbrae Black Jackdaw | 65 |
| HW Fletcher | 64 |
| NuEra T14 0142 | 62 |

| Gestation Length | Days |
|--------------------|------|
| Ribble Black Brook | 277 |
| NuEra T14 0191 | 279 |
| NuEra T14 0136 | 279 |
| NuEra T14 0156 | 280 |
| HW Fletcher | 280 |

| Calf Survivability | (%) |
|--------------------|-----|
| HW Fletcher | 0.2 |
| NuEra T14 0191 | 1.2 |
| NuEra T14 0144 | 1.2 |
| Skail Emperor | 1.3 |
| NuEra T14 0136 | 1.6 |

BARWISE 1 TOLKEN



HEREFORD



BARWISE 1 TOLKEN

EAR TAG: UK103000101145 **GENUS ABS CODE:** H9229 **NAAB CODE:** 829HP0957
SIRE: MOESKAER ULTRA 1582 **DAM:** BARWISE 1 ANNI-FERN **MGS:** BARWISE 1 WELLINGTON
USE EAR TAG NUMBER TO REGISTER CALVES: UK103000101145

UNDER SURVEY

BARKISLAND RASCAL



LIMOUSIN



BARKISLAND RASCAL

EAR TAG: UK126039500705 **GENUS ABS CODE:** LN3021 **NAAB CODE:** 829LM0112
SIRE: CHYTODDEN CONAN **DAM:** BARKISLAND OWL **MGS:** LODGE HAMLET
USE EAR TAG NUMBER TO REGISTER CALVES: UK126039500705
MYOSTATIN INFORMATION: 2 COPIES F94L PROTOPORPHYRIA CARRIER

UNDER SURVEY

GLENVALE 1 FERGUSON



HEREFORD



GLENVALE 1 FERGUSON

EAR TAG: UK746564300807 **GENUS ABS CODE:** H9223 **NAAB CODE:** 829HP0960
SIRE: VEXOUR 1 PALMER **DAM:** GLENVALE 1 POLLY 617 **MGS:** DENDOR 1 LEDLEY
USE EAR TAG NUMBER TO REGISTER CALVES: UK746564300807

UNDER SURVEY

ALAGILS SATELLITE



LIMOUSIN



ALAGILS SATELLITE

EAR TAG: UK502062100513 **GENUS ABS CODE:** LN3035 **NAAB CODE:** 829LM0113
SIRE: CAMEOS **DAM:** ALAGILS NOMI **MGS:** NETHERHALL GALLIANT
USE EAR TAG NUMBER TO REGISTER CALVES: UK502062100513
MYOSTATIN INFORMATION: 2 COPIES F94L PROTOPORPHYRIA CARRIER

UNDER SURVEY

For more information on our NuEra Genetics™ beef sires or the beef schemes available, contact our beef team:



MARK SMITH
EMEAR Beef Director
07971 118980
Mark.Smith@genusplc.com



JESS SIMMS
EMEAR Beef Brand Manager
07866 01000
jess.simms@genusplc.com



ARWEL OWEN
UK Beef Sales Development Manager
07911 18547
arwel.owen@genusplc.com



DAN HAYWARD
Beef Cornerstone™ Manager
07971 839754
dan.hayward@genusplc.com



NEIL WHARTON
EMEAR Beef Key Account
Manager
07971 119014
neil.wharton@genusplc.com



GEORGE WILLIAMSON
EMEAR Beef Key Account
Manager
07929 759966
George.williamson@genusplc.com



GEMMA WARK
Beef Key Account Manager
Manager
07814 184909
gemma.wark@genusplc.com



RHYS ROBERTS
Beef Genetics Programme
Technician
07989 220597
rhys.roberts@genusplc.com



ANNA GRUNDY
Jr Key Account Manager
07812784403
anna.grundy@genusplc.com



**MORE PREGNANCIES.
MORE PROFIT.**



Pregnancies, performance, and profit begin with the highest fertility genetics.

*3.2 million dairy inseminations prove that our industry-leading Sexcel® dairy genetics and Beef InFocus™ genetics will deliver world-beating fertility and unrivalled genetic progress when used as part of your herd's breeding strategy.



Why not call our genetic specialist today and find out how you can make the step change:
01270 616681 www.absglobal.com/uk/winning-game-plan

*from Real World Data, the world's largest insemination dataset

Everything you need to thrive...



GENEadvance®



NuEra Beef Genetics™



Sexcel®



AI Service



Valiant™



Ingenuity



Powerstart®



RMS

That's Genus ABS.

We know that the choices you make affect your lives and your livelihoods, and we're determined to make your decision-making process as straightforward and profitable as possible, by providing all your solutions under one roof. From industry leading sexed genetics to beef calf crops, the latest in herd management technology all the way to 'happy cow silage', you'll have everything you need to thrive.



Call us today on **01270 616681** or scan the QR code to discover how to profit from genetic progress