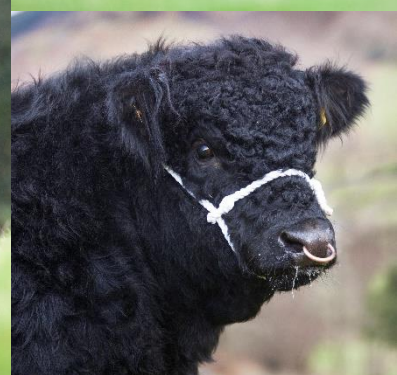


**Welsh Black**



# Machreth **BEDWYR 5th**



**Tag No.:** UK 704805 200301  
**Genus Code:** WB1039

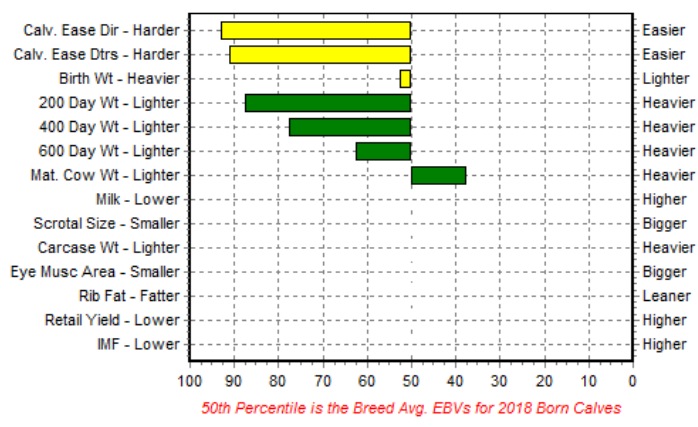
**NAAB Code:** 29WB0004  
**Royalty:** N/A

## SIRE PEDIGREE:

**Sire:** Ysguboriau Llywelyn 49th  
**Dam:** Machreth Betsan 20th  
**MGS:** Deiniolen Prince

## March 2020 EBV's

EBV Percentiles for MACHRETH BEDWYR 5TH



March 2020 Welsh Black BREEDPLAN														
	Calving Ease DIR (%)	Calving Ease DTRS (%)	Birth Wt (kg)	200 Day Wt (kg)	400 Day Wt (kg)	600 Day Wt (kg)	Mat Cow Wt (kg)	Milk (kg)	Scrotal Size (cm)	Carcase Wt (kg)	Eye Muscle Area (sq cm)	Rib Fat (mm)	Retail Beef Yield (%)	IMF (%)
EBV	-4.8	-2.6	+1.5	+9	+14	+22	+27	-	-	-	-	-	-	-
Acc	47%	33%	55%	39%	36%	38%	33%	-	-	-	-	-	-	-
Breed Avg. EBVs for 2018 Born Calves <a href="#">Click for Percentiles</a>														
EBV	-0.6	-0.5	+1.5	+12	+17	+24	+25	+4	+0.0	+17	+0.3	+0.1	+0.2	+0.1

For updated EBV information please visit:  
<http://abri.une.edu.au/online/cgi-bin/i4.dll?1=3E373A2E&2=242D&3=56&5=2B3C2B3C3A&6=265C5C5B2421202624>

**GENUS BEEF. PROVEN TO BE THE BEST.**