

BEEF



2023 - 2024 Australian



BEEF SIRE Directory



A large circular frame with a red outer ring and a blue inner ring. Inside the frame, the word 'Sexcel' is written in a large, bold, blue and red font. Below it, 'Sexed Genetics' is written in a smaller, blue font. At the bottom of the frame, the tagline 'Fast Forward your Genetic Progress™' is written in a small, white font. The background of the entire advertisement is dark blue with a pattern of small, light blue dots and several red sperm cell illustrations of varying sizes and orientations.

Sexcel
Sexed Genetics

Fast Forward your Genetic Progress™

Breed The Best From Your Best

Take your herd to the next level and breed elite female offspring from your best cows with Sexcel, Australia's most trusted Sexed Semen technology.

Sexcel® Sexed genetics, produced using 21st century technology and ABS' best genetics, deliver more, high-value pregnancies in your herd.



Patriarch 29AN2093

Page: 21



Comstock 29AN2221

Page: 11

FOREWORD

Welcome to the 2023-24 ABS Australia Beef Sire Directory. 2023 has been a fantastic year for us at ABS, primarily focusing on new acquisitions to strengthen our product line-up for this Spring and into the future to benefit our customers across all breeds.

As always, we thank all breeders across Australia for the support of our program here at ABS, and we have been delighted to see the incredible volume and quality of ABS progeny emerging across the country.

This year, we welcome a significant number of new bulls into our program. Our focus has always been, and continues to be, providing elite sires to our customers who exhibit an immaculate blend of phenotype, pedigree depth as well as strong performance data. Our new Angus bulls including

Millah Murrah Rector R53, Dunoon Sunstone S378 and Basin True Grit are sure to attract plenty of attention, as well as proven performers Landfall New Ground N90 and Millah Murrah Paratrooper P15.

Additionally, the new Australian record black Simmental sire Woonallee Toronto T274 has certainly been our most recent highlight and we are delighted to bring this bull to our customers. New additions in Speckle Park and Polled Hereford can also be found in this Directory.

We look forward to working closely with all our clients over the coming 12 months, and please do not hesitate to contact a member of the Beef Team at any time for assistance.

Fletch Kelly



ABS Australia Beef Team

STAYING UP TO DATE



YouTube ABS Australia

Are you on our mailing list?



Head to www.absglobal.com/au and subscribe today!

Follow us!



@absaubeeff

TLG VISITATION POLICY

Dear clients,

With the increased biosecurity threat stemming from a number of diseases (such as Foot & Mouth Disease), we have been asked to temporarily suspend customer visits to Total Livestock Genetics (TLG) until further notice. The health, safety and wellbeing of all animals, in addition to the continued operational capacity of collection centres such as TLG are absolutely vital to our industry. We thank clients for their understanding and will advise accordingly should this suspension be lifted.

SEMEN DISCLAIMER

Genus Australia, trading as ABS Australia, its employees and agents cannot guarantee the conception rate or productivity to be obtained in connection with the use of its products or recommended techniques, therefore it makes no warranty of any kind whatever, expressed or implied, which extend beyond the description of the products hereon and all warranties of merchant ability and fitness for a particular purpose are hereby disclaimed.

It is the responsibility of the purchaser to make themselves aware of ABS Australia's full Terms and Conditions. These are available by contacting the ABS Australia office on 1800 227 285, ABS Australia's website (<http://www.absglobal.com/au>) or your local ABS Sales Representative.



ROCKET MAN

(AMF,CAF,DDF,NHF,DWF,MAF,MHF,OHF,OSF,RGF)

Millah Murrah Rocket Man R38 | 29AN2241 | Owned by: Brooklana Angus



Dam: Millah Murrah Abigail P57



Grand Dam: Millah Murrah Abigail H232



Son: Millah Murrah T24

Reg. No.	NMMR38
Born	26/01/2020
Birth Weight	39kg
Weight 400 days	614kg
Weight 500 days	708kg
SS	43cm

EF Commando 1366

Millah Murrah Paratrooper P15

Millah Murrah Ela M9

LD Capitalist 316

Millah Murrah Abigail P57

Millah Murrah Abigail H232

Elton's Favourite

- Rocket Man R38 is the \$280,000 Australian record priced Angus sire from the world record averaging 2021 Millah Murrah sale. Considered a step up from his famous sire by many who saw him, Rocket Man was the headline act of the spring bull season across Australia
- Phenotypically, Rocket Man inspires awe. He is structurally outstanding and a gentleman to handle
- A bull so wide and correct from his muzzle, over the chine and all the way through to his hips and pins, it is difficult to fault him from any angle
- Possessing so much sheer volume, capacity, and sire appeal, Rocket Man combines all the best traits of his sire and maternal grandsire, Paratrooper & Capitalist
- Admire the power and thickness of this exceptional sire and it's no surprise why folks are raving about his progeny!

	CE-DIR	CE-DT	GL	BW	200D	400D	600D	MCW	Milk	DTC	SS	DOC	CWT	EMA	Rib	Rump	RBV	IMF	NFI-F	Claw	Foot	Leg	\$A	\$A-L
EBV	+7.6	+7.5	-6.1	+5.2	+65	+119	+146	+133	+16	-5.7	+2.6	+11	+95	+5.2	+0.2	+0.7	+0.0	+1.6	+0.29	+0.80	+0.74	+0.84	\$250	\$450
ACC	73%	55%	98%	97%	92%	88%	84%	80%	67%	42%	81%	84%	74%	72%	74%	73%	67%	72%	56%	71%	71%	73%		
%Rank	12	9	28	74	4	2	6	9	59	23	29	90	2	62	43	31	77	64	64	40	7	5	6	1

EBVs as at Mid-July 2023 **TOP 20%**



SUNSTONE

(AMF,CAF,DDF,NHF,RGF)

Dunoon Sunstone S378 | 29AN2286 | Owned by: Ben Nevis Angus, Walcha NSW



Sire: Dunoon Prime Minister P758



Dam: Dunoon Anguish L171

Reg. No.	BHR21S378
Born	18/07/2021
Birth Weight	38kg
Weight 200 days	405kg
Weight 400 days	680kg
SS	41cm

Rennylea L508
Dunoon Prime Minister P758
 Dunoon Japara M1008
 Lawsons Ki Evident H H6201
Dunoon Anguish L171
 Dunoon Anguish H189

A Truly Rare Find

- Available late spring
- Top selling \$65,000 sire at the 2023 Dunoon Angus autumn sale purchased by Ben Nevis Angus
- Sunstone S378 combines exquisite length, loin strength and softness in a structurally sound package
- Super placid in nature, S378 exhibits all the essential qualities of the elite modern-day Angus animal
- A pedigree littered with Angus gold, sired by the highly revered \$140,000 Dunoon Prime Minister P758, combined with the renowned Lawsons Evident H6201 on his maternal side
- Admire Sunstone's ultimate EBV data set
- Now take a look at the docility, carcass and structural data! There are very few bulls who can match Sunstone's combination of phenotype, structural integrity and data spread
- S378 is the next logical step for breeders to follow on from the hugely successful Landfall New Ground N90 and Sydgen Enhance

	CE-DIR	CE-DT	GL	BW	200D	400D	600D	MCW	Milk	DTC	SS	DOC	CWT	EMA	Rib	Rump	RBV	IMF	NFI-F	Claw	Foot	Leg	\$A	\$A-L
EBV	+7.0	+5.6	-9.0	+3.6	+56	+106	+137	+115	+18	-5.0	+2.5	+39	+82	+11.7	+0.9	+1.4	+0.8	+3.6	+0.24	+0.54	+0.76	+0.96	\$270	\$449
ACC	57%	45%	72%	75%	75%	72%	73%	69%	62%	39%	72%	58%	62%	63%	64%	64%	57%	66%	52%	72%	67%	69%		
%Rank	16	23	5	39	24	12	14	26	39	40	33	3	11	6	28	21	28	15	58	5	9	26	2	1



REMBRANDT

(AMF,CAF,DDF,NHF,DWF,MAF,MHF,OHF,OSF,RGF)

Millah Murrah Rembrandt R48 | 29AN2240 | Owned by: ABS Australia; Woonallee Simmental; J T Angus; Millah Murrah Angus



Dam: Millah Murrah Abigail N60



Son: Millah Murrah T23



Son: Millah Murrah T30

Reg. No.	NMMR48
Born	28/01/2020
Birth Weight	39kg
Weight 400 days	584kg
Weight 500 days	704kg
SS	44cm

EF Commando 1366

Millah Murrah Paratrooper P15

Millah Murrah Ela M9

Millah Murrah Kingdom K35

Millah Murrah Abigail N60

Millah Murrah Abigail H150

A Work of Art

- Rembrandt R48 is a work of art from any angle, secured for \$240,000 at the 2021 Millah Murrah on property sale
- A prototype for the modern Angus animal, displaying vast dimension, softness of skin, length and a top line filled with natural red meat from front to back and down through the hams
- Structurally he has a balanced and supple gait, combined with leg and foot structure to die for, and perfect design of the reproductive anatomy
- Throw in a beautiful disposition, with a true sire's head and outlook and Rembrandt really does strike as a genetic work of art for the ages
- Awesome first calf reports across Australia, with calves born easy and displaying superb thickness from day dot!
- As a rising 5 year old bull, Rembrandt has retained immaculate foot and leg structure while in collection and following natural service

	CE-DIR	CE-DT	GL	BW	200D	400D	600D	MCW	Milk	DTC	SS	DOC	CWT	EMA	Rib	Rump	RBV	IMF	NFI-F	Claw	Foot	Leg	\$A	\$A-L
EBV	+3.9	+3.4	-7.1	+4.6	+52	+95	+128	+104	+17	-5.8	+3.3	+34	+66	+8.7	+2.2	+3.1	+0.5	+1.2	+0.43	+0.76	+0.88	+1.08	\$228	\$388
ACC	72%	54%	97%	97%	91%	86%	83%	79%	66%	41%	81%	86%	73%	68%	71%	71%	65%	70%	55%	69%	69%	70%		
%Rank	41	46	16	62	38	36	27	44	49	21	12	7	51	22	10	6	47	75	79	31	28	65	20	18

EBVs as at Mid-July 2023 TOP 20%



PARATROOPER

(AMF,CAF,DDF,NHF,DWF,MAF,MHF,OHF,OSF,RGF)

Millah Murrah Paratrooper P15 | 29AN2123 | Owned by: Arkle Angus, WA and Millah Murrah Angus NSW



Daughter: Millah Murrah NMMR95



Daughter: Millah Murrah NMMR4



Son: Millah Murrah NMM21S70

Reg. No.	NMMP15
Born	29/01/2018
Birth Weight	35kg
Weight 19 months	840kg
FS Mature	6.8

EF Complement 8088

EF Commando 1366

Riverbend Young Lucy W1470

Millah Murrah Highlander G18

Millah Murrah Ela M9

Millah Murrah Ela K127

The Record Breaker

- \$160,000 2019 Australian record priced Angus bull
- P15 is a gentleman to handle and displays incredible fleshing and doing ability
- Superb carcass shape, muscle and softness
- Ideal for a wide range of bloodlines. P15's cookie cutter approach and blend of EBVs allow a balanced genetic generation progression
- Paratrooper's moderate maturity pattern showcases his progeny. Keeping his females feminine with adequate muscle and his sons masculine without being too forward
- Paratrooper progeny continue to exceed expectation
- Progeny consistently hitting top results in both seedstock and commercial operations throughout multiple selling seasons
- Dominates the Angus Australia selection indexes sitting in the top 4% or higher for the Maternal indexes and top 1% for the Angus Terminal Sire Index

	CE-DIR	CE-DT	GL	BW	200D	400D	600D	MCW	Milk	DTC	SS	DOC	CWT	EMA	Rib	Rump	RBV	IMF	NFI-F	Claw	Foot	Leg	\$A	\$A-L
EBV	+8.4	+7.8	-9.1	+3.2	+67	+117	+146	+116	+23	-4.6	+3.2	+18	+91	+6.6	-1.3	-1.9	+0.4	+2.3	+0.11	+0.90	+0.82	+1.06	\$261	\$445
ACC	91%	72%	99%	99%	99%	99%	98%	92%	85%	52%	98%	98%	86%	86%	86%	86%	80%	84%	65%	98%	97%	96%		
%Rank	8	7	4	31	3	3	7	25	11	51	14	59	3	44	77	77	53	43	40	61	17	58	3	2

EBVs as at Mid-July 2023 **TOP 20%**



RIGHT TIME

(AMF,CAF,DDF,NHF,DWF,MAF,MHF,OHF,OSF,RGF)

S Right Time 7861 | 271AN4833 | Owned by: Spickler Ranch North, Glenfield, ND; Stuart Simon, Tolstoy, ND



Maternal Grand Sire: S Chisum 6175



Dam: S Queen Essa 367



Right Time Sons

	CE-DIR	CE-DT	GL	BW	200D	400D	600D	MCW	Milk	DTC	SS	DOC	CWT	EMA	Rib	Rump	RBY	IMF	NFI-F	Claw	Foot	Leg	\$A	\$A-L
EBV	-0.8	+5.8	-6.4	+5.7	+63	+102	+134	+113	+20	-5.0	+2.6	+24	+78	+5.3	-0.5	-0.2	+0.2	+1.5	-0.33	+0.80	+0.76	+0.86	\$218	\$371
ACC	52%	44%	65%	65%	68%	64%	65%	63%	56%	38%	61%	35%	56%	56%	57%	58%	51%	61%	48%	78%	78%	51%		
%Rank	76	21	24	82	7	19	17	29	23	40	29	32	17	61	60	48	66	67	5	40	9	7	30	29

Reg. No.	USA18762372
Born	03/04/2017
Birth Weight	39kg
Weaning Weight	348kg
Yearling Weight	576kg
SS 12 months	40.8cm
FS 12 months	6.1

Leachman Right Time 338-5605

Sitz Right Time 8034

Sitz Florabelle Fanny 1293

S Chisum 6175

S Queen Essa 367

S Queen Essa 208

An Absolute Beast

- The phenotypic standout of the 2022 USA tour out of the renowned Spickler North Ranch, ND
- Without question, one of the most powerful bulls to enter the ABS program for many, many years
- Admire the phenomenal power, depth, width and top-line strength of this absolute powerhouse. Right Time exemplifies everything we love about the Angus breed
- Right Time's presence, soundness and mobility for a bull of such physical dimension is pure gold, and testament to the depth of quality within the Spickler North herd
- The ultimate phenotype sire to add that much needed punch and muscle back into the Angus breed
- Good scrotal, clean sheathed, with excellent tail head placement
- A must-use for 2023



SOVEREIGN

(AMF,CAFU,DDF,NHF,DWF,MAF,MHF,OHF,OSF,RGF)

Rissington Sovereign Q485 | 29AN2263 | Owned by: Rissington Cattle Company, NZ



Sovereign early 2023



Dam: Ellerton 17009

Reg. No.	NZE145720190485
Born	22/08/2019
Birth Weight	40kg
Weight 205 days	216kg
Weight 365 days	361kg
Weight Mature	982kg
SS 12 months	34cm
YFS 12 months	5

Paringa Judd J5

Paringa Monarch M103

Lawsons Bartel E7 J1290

K C F Bennett Automatic A348

Ellerton 17009

Ellerton C74

Sovereignty Matters

- Young gun from New Zealand's highly acclaimed Rissington Cattle Company offering a scintillating phenotype and data package
- Unique combination of high carcass merit, curve bender spread with outstanding phenotype and super sound structure
- His dam & grand dam were the highest scanning females in their contemporary group scanning +8.03 & +7.8 for IMF
- In the Leachman Global Multibreed analysis of over 1.4 million animals, Sovereign sits top 1% for \$Profit and is currently the number 1 bull for Fertility
- Maternal brother Rissington Paradox R376 used at Rissington and commercially in NZ in 2021 and semen exported to Australia
- Admire the phenomenal data spread that this sire offers - top 5% CED, super low BW, top 10% growth, top 6% carcass weight and an astonishing +5.7 IMF!

	CE-Dir	CE-DT	GL	BW	200D	400D	600D	MCW	Milk	DTC	SS	DOC	CWT	EMA	Rib	Rump	RBY	IMF	NFI-F	Claw	Foot	Leg	\$A	\$A-L
EBV	+9.3	+7.7	-6.5	+0.9	+61	+112	+144	+118	+21	-4.0	+2.9	+11	+87	+7.6	-1.5	-2.9	-0.2	+5.7	+0.16	+0.96	+1.02	+1.06	\$256	\$439
ACC	58%	47%	74%	72%	73%	71%	71%	68%	63%	37%	67%	35%	62%	61%	63%	63%	57%	65%	51%	65%	65%	61%		
%Rank	5	8	23	5	10	5	8	22	22	68	21	88	6	32	81	89	85	2	47	73	62	58	4	2

EBVs as at Mid-July 2023 **TOP 20%**



COMSTOCK

(AMF,CAF,DDF,NHF,DWF,MAF,MHF,OSF,RGF)

Woodhill Comstock | 29AN2221 | Owned by: Woodhill Farms Inc, - ABS Global Inc, De Forest - Cherne Angus, Guttenberg IA



Paternal Grand Sire: KM Broken Bow 002



Comstock Son



Comstock Son

Reg. No.	USA19674083
Born	21/08/2019
Birth Weight	35kg
Weight 205 days	252kg
Weight 365 days	493kg
Wt 22 months	740 kg
SS	37cm

KM Broken Bow 002
Spring Cove Reno 4021
 Spring Cove Liza 021

Connealy Confidence Plus
Cherne Evergreen D501-F348
 Cherne Evergreen X353-D501

Mother Lode of Genetic Opportunity

- Deep, wide, thick and square from any angle, one of the standout phenotype bulls of the 2022 USA tour
- True B muscle pattern bull with a thumping hindquarter and so much fill from hip to pin down to the hock
- Flawless EBV data profile offering big calving ease, low birth, top 6% 200 and top 12% for 400 day growth
- Huge milk, solid docility and phenomenal carcass data including +14.5 EMA and +3.5 IMF combination!
- Grandson of the globally famous ABS sire KM Broken Bow
- Bull inspection – good scrotal, great foot and heel structure, quiet disposition, clean sheath and insane thickness!
- Truly a rare combination of powerful phenotype and data to burn!
- Available in male and female Sexcel® sexed genetics

	CE-DIR	CE-DT	GL	BW	200D	400D	600D	MCW	Milk	DTC	SS	DOC	CWT	EMA	Rib	Rump	RBV	IMF	NFI-F	Claw	Foot	Leg	\$A	\$A-L
EBV	+5.4	+6.7	-2.0	+1.3	+63	+106	+130	+87	+27	-4.1	+1.9	+18	+71	+14.5	-1.2	-1.4	+0.5	+3.5	-0.15	+0.78	+1.00	+0.80	\$276	\$429
ACC	50%	40%	66%	77%	79%	78%	75%	73%	73%	33%	72%	32%	73%	72%	68%	63%	61%	74%	48%	69%	69%	54%		
%Rank	27	14	87	7	6	12	23	71	3	66	56	61	34	1	75	69	47	17	13	36	57	3	1	3

EBVs as at Mid-July 2023 **TOP 20%**

SURPASS

(AMF,CAF,DDF,NHF,DWF,MHF,OHF,OSF,RGF)

BJ Surpass | 29AN2267 | Owned by: Knoll Crest Farm Inc., VA; Connealy Angus, NE; ABS Global, Inc., WI



Reg. No.	USA19774516
Born	01/09/2019
Birth Weight	32kg
Weight 205 days	372kg
Weight 365 days	624kg
SS 12 months	38.5cm
FS	6.3

Basin Payweight 1682
TEX Playbook 5437
 Rita 1C43 of 9M26 Complete
 G A R Prophet
BJ Prophet 5275
 BJ Complete 1165

Surpass Your Breeding Program Limits

- Breeders are recognizing the value of Surpass – progeny are in high demand as they move to the front of their contemporary groups and top production sales across USA
- Solidifying himself as a calving ease, growth spread specialist that governs mature size, emphasizes maternal traits, and still excels at end product merit
- Progeny are consistently sharp fronted, deep soft ribbed with extra body and balance. He delivers an uncompromising foundation of feet and structure
- Excellent progeny reviews from US inspections in 2022 and 2023

	\$EN	\$M	\$W	\$F	\$G	\$B	\$C	AxH	AxJ
INDEX	-4	+111	+78	+95	+69	+164	+324	+174	+155
%Rank	30	1	10	35	15	20	3	10	15

	CED	BW	WW	YW	RADG	DMI	YH	SC	HP	CEM	MILK	MW	MH	DOC	CLAW	ANGLE	PAP	HS	CW	MARB	REA	FAT
EPD	+14	-.6	+68	+116	+.23	+1.16	+.2	+.75	+19.2	+15	+35	+29	+.2	+22	+36	+30	+2.18	+.46	+55	+.92	+.76	+.004
ACC	.80	.93	.89	.81	.41	.41	.82	.81	.27	.32	.33	.46	.46	.80	.62	.58	.29	.56	.52	.45	.46	.46
%Rank	4	15	35	45	65	65	80	60	2	3	10	85	60	30	10	1	75	35	30	20	30	40

EPDs as at Mid-July 2023 **TOP 35%**

REAL DEAL

(AMF,CAF,DDF,NHF,DWF,MAF,MHF,OHF,OSF,RGF)

Alpine Real Deal R163 | 29AN2257 | Owned by: Venturon Livestock, WA



Reg. No.	CGKR163
Born	21/07/2020
Birth Weight	37kg
Weight 11 months	310kg
Weight 16 months	485kg
Weight 18 months	622kg
Weight 20 months	730kg
SS 18 months	39cm

H P C A Intensity
Rennylea N542
 Rennylea Eisa Erica G366
 Te Mania Longshot L107
Alpine Longshot P354
 Alpine M242

Quite Literally, The Real Deal

- R163's sire N542 has been exclusive to 4 herds. The N542 sons have been dynamic at all places, topping the Bowmont sale at \$20,000; Rennylea 9 sons averaged \$23,000; At Alpine R163 topped the sale at \$90,000 with a total of 12 sons of N542 averaging \$27,000
- R163's dam is by the purchased Te Mania Longshot L107. This sire delivers milk, calving ease, low MCW and high IMF
- The maternal grandam, M242, descends from one of Coonamble's strongest cow lines with A61
- Real Deal, has a superb pedigree, fabulous EBVs, with great birth to growth spread, and yet moderation in mature size; add a big scrotal, big EMA, positive fats and huge +4.2 for IMF
- Real Deal is stout made and offers a phenotype that showcases red meat right down into the flank. He has a proper Angus head and has an incredibly balanced phenotype to him
- Limited semen available

	CE-DIR	CE-DT	GL	BW	200D	400D	600D	MCW	Milk	DTC	SS	DOC	CWT	EMA	Rib	Rump	RBV	IMF	NFI-F	Claw	Foot	Leg	\$A	\$A-L
EBV	+0.0	-5.4	-1.0	+4.0	+59	+106	+137	+109	+23	-5.7	+3.2	+30	+71	+10.1	+1.3	+2.7	-0.5	+4.2	+0.54	+0.72	+0.74	+0.88	\$244	\$397
ACC	68%	51%	94%	91%	78%	75%	78%	75%	64%	40%	74%	56%	65%	62%	64%	64%	58%	66%	53%	72%	73%	64%		
%Rank	72	97	94	48	15	13	14	34	10	23	14	13	36	13	21	9	93	8	88	24	7	9	9	13

EBVs as at Mid-July 2023 **TOP 20%**





NEW GROUND

(AMF,CAF,DDF,NHF,DWF,MAF,MHF,OHF,OSF,RGF)

Landfall New Ground N90 | 29AN2116 | Owned by: Absolute Angus and ABS Australia



New Ground N90

Reg. No.	TFAN90
Born	16/07/2017
Birth Weight	37kg
Weight 200 days	242kg
Weight 400 days	520kg
Weight 20 months	712kg
SS 18 months	43cm
FS	6.5

A A R Ten X 7008 S A
V A R Discovery 2240
 Deer Valley Rita 0308

Matauri Reality 839
Landfall Elsa L88
 Landfall Elsa J139



Dam: Landfall Elsa L88



Son: Granite Ridge Summit S148

Discovering Solid Ground

- Australia's hottest Angus bull in 2022, ABS top seller!
- N90 was the 2018 record \$75,000 Tasmanian bull and the standout sire to be acquired in September that year
- Long, deep bodied bull possessing fabulous sire appeal and an awe-inspiring presence
- New Ground's exquisite combination of phenotype and EBVs makes him a must-use sire for any seedstock or commercial operation
- Ground-breaking maternal pedigree featuring the who's who of Angus sires; Reality, Emperor, Infinity, Reagan, 036, Scotchcap, M032
- Of the 10 dams in his maternal pedigree, 9 have been donors, the other one had 9 natural calves!
- Admire N90's incredible EBV profile including +3.8 BW, huge growth, staggering +6.8 Scrotal, +40 Docility, positive fat and +2.5 IMF! A now proven bull

	CE-DIR	CE-DT	GL	BW	200D	400D	600D	MCW	Milk	DTC	SS	DOC	CWT	EMA	Rib	Rump	RBV	IMF	NFI-F	Claw	Foot	Leg	\$A	\$A-L
EBV	+1.5	+2.0	-6.3	+3.8	+57	+111	+141	+130	+12	-4.1	+6.8	+40	+65	+12.5	+3.0	+2.1	+0.5	+2.5	+0.89	+0.90	+0.82	+0.90	\$227	\$406
ACC	92%	77%	99%	99%	98%	98%	98%	97%	93%	60%	98%	98%	90%	88%	89%	89%	84%	87%	70%	92%	92%	88%		
%Rank	61	60	25	44	20	7	10	11	89	66	1	2	52	4	5	13	47	38	99	61	17	12	21	9

EBVs as at Mid-July 2023 **TOP 20%**



DIGNITY

(AMF,CAF,DDF,NHF,DWF,MAF,MHF,OHF,OSF,RGF)

Sitz Dignity 599J | 29AN2253 | Owned by: Sitz Angus Ranch, MT; JJ Angus, PA; ABS Global, Inc., WI



Maternal Brother: Sitz Incentive 704H



Dam: Sitz Barbaramere Nell 53F



Sire: Sitz Resilient 10208

Reg. No.	USA20003585
Born	30/01/2021
Birth Weight	38.5kg
Weight 205 days	406kg
Weight 365 days	634kg
FS	6.2

Sitz Stellar 726D
Sitz Resilient 10208
 Sitz Miss Burgess 1856

Sitz Invasion 574D
Sitz Barbaramere Nell 53F
 Sitz Barbaramere Nell 105D

Maintain Your Herd's Dignity!

- The most eagerly anticipated young US arrival to Australia in many years, featuring a pedigree absolutely packed with Sitz Angus royalty!
- Dignity combines two of the most prolific bloodlines at Sitz Angus in recent years!
- A son of the well renowned Sitz Resilient 10208, and paternal grandson to the highly acclaimed Sitz Stellar 726D who has featured prominently in programs right throughout Australia over recent years
- If Dignity's paternal pedigree didn't impress enough, take a look at the maternal side!
- Dignity is the maternal brother to the record US \$235,000 Sitz Incentive 704H, out of the famous Sitz Barbaramere Nell 53F, the US \$130,000 top selling female of the 2021 Sitz Angus sale
- Admire the phenomenal balance, strength of spine and head carriage of this young gun
- Top 1% for Foot Angle and Claw Set, carrying on from the outstanding structural integrity offered by Sitz Stellar 726D

	CE-DIR	CE-DT	GL	BW	200D	400D	600D	MCW	Milk	DTC	SS	DOC	CWT	EMA	Rib	Rump	RBV	IMF	NFI-F	Claw	Foot	Leg	\$A	\$A-L
EBV	+6.6	+7.0	-9.0	+4.0	+62	+111	+132	+94	+15	-4.1	+0.5	+17	+77	+13.8	-0.6	-1.1	+1.5	+0.6	+0.10	+0.40	+0.52	+1.02	\$274	\$435
ACC	51%	35%	71%	79%	80%	78%	76%	73%	72%	28%	73%	48%	73%	72%	67%	62%	60%	73%	46%	76%	76%	53%		
%Rank	18	12	5	48	7	6	20	61	67	66	94	65	20	2	62	64	5	88	39	1	1	45	1	3

EBVs as at Mid-July 2023 **TOP 20%**



RESILIENT

(AMF,CAF,DDF,NHF,DWF,MAF,MHF,OHF,OSF,RGF)

Sitz Resilient 10208 | 271AN4314 | Owned by: Bar J V Angus Ranch, Fairview MT; Dan E Inglass, Casper WY; Lunds B Bar Angus, Wibaux MT



Resilient: 18 Months



Sire: Sitz Stellar 726D

Reg. No.	USA19057457
Born	15/02/2018
Birth Weight	36kg
Weight 205 days/ratio	340kg/121
Weight 365 days	495kg
FS	6.4

Mohnen Substantial 272

Sitz Stellar 726D

Sitz Pride 200B

Sitz Top Game 561X

Sitz Miss Burgess 1856

Sitz Miss Burgess 4381

Strong, Tough, Hardy

- The most exciting Stellar son to be offered in Australia to date
- Top 3% Foot Angle; top 24% Claw
- On USA EPD Resilient is at top 30% for Marbling
- The record-setting \$165,000 bull of the fall 2019 Sitz Angus Ranch sale
- Resilient has been described by all who have seen him as wide based, deep bodied and free moving
- As his dam's first calf, Resilient had a weaning ratio of 121 and an adjusted yearling weight of 1,530 pounds (695kg) for a yearling ratio of 117
- The dam of Sitz Resilient is a daughter of the now-deceased Pathfinder sire Sitz Top Game 561X whose Pathfinder dam is considered the greatest daughter of Onward produced in the Sitz program. After a great donor career for Sitz Angus and Express she sold half interest for \$200,000
- First calves in Australia are standouts for thickness, style and temperament!

	CE-DIR	CE-DT	GL	BW	200D	400D	600D	MCW	Milk	DTC	SS	DOC	CWT	EMA	Rib	Rump	RBV	IMF	NFI-F	Claw	Foot	Leg	\$A	\$A-L
EBV	+5.2	+7.6	-9.7	+2.9	+58	+106	+128	+92	+18	-5.8	+1.4	+12	+70	+8.0	+0.3	-0.2	+0.3	+2.5	+0.32	+0.72	+0.66	+1.04	\$263	\$424
ACC	68%	42%	97%	96%	93%	89%	86%	82%	76%	35%	84%	91%	81%	77%	75%	71%	68%	80%	51%	98%	98%	61%		
%Rank	29	8	3	25	17	13	27	63	41	21	75	86	38	28	40	48	60	38	68	24	3	52	3	4

EBVs as at Mid-July 2023 **TOP 20%**

STELLAR

(AMF,CAF,DDF,NHF,DWF,MAF,MHF,OHF,OSF)

Sitz Stellar 726D | 29AN2025 | Owned by: Sitz Angus Farm, MT; ABS Global, Inc., WI



Stellar Performance and Design

- THE go-to USA bull to add extreme mass, power, thickness and faultless structure to your breeding program
- Boasting structural data and visual appraisal, Stellar is unquestionably one of the safest structural bulls available to the Australian cattle sector
- Combine Stellar's structural EBVs with big calving ease, low birth weight, super growth data and big EMA & Fats combination, and he becomes unsurpassed in the Angus breed
- Super thick topped and deep bodied, Stellar only improved his powerhouse phenotype while breeding cows as a yearling
- Stellar sons are flying in the sale rings already in Australia and are in demand for their extreme mass and impeccable structure
- Sexcel® sexed female product available

Reg. No.	USA18397542
Born	23/01/2016
Birth Weight	30kg
Weight 205 days	411kg
Weight 365 days	595kg
SS 12 months	37cm
FS Mature	6.2

Benfield Substance 8506
Mohnen Substantial 272
 Mohnen Glyn Mawr Elba 1758
 Connealy Final Product
Sitz Pride 200B
 Sitz Pride 308Y

	CE-DIR	CE-DT	GL	BW	200D	400D	600D	MCW	Milk	DTC	SS	DOC	CWT	EMA	Rib	Rump	RBV	IMF	NFI-F	Claw	Foot	Leg	\$A	\$A-L
EBV	+4.9	+7.4	-9.6	+2.6	+54	+105	+132	+98	+18	-6.5	+1.4	+25	+63	+4.9	+4.0	+3.8	+0.0	+1.4	+0.33	+0.60	+0.78	+1.14	\$252	\$420
ACC	79%	50%	98%	98%	97%	96%	96%	89%	82%	43%	93%	92%	85%	85%	83%	80%	76%	85%	56%	99%	99%	78%		
%Rank	32	9	3	20	29	13	20	54	43	10	75	28	60	66	2	4	77	69	69	9	11	81	6	5

EBVs as at Mid-July 2023 **TOP 20%**

COMMAND

(AMF,CAF,DDF,NHF,DWF,MAF,MHF,OHF,OSF)

Baldrige Command C036 | 29AN1972 | Owned by: Baldrige Bros NE and ABS Global, Inc., WI



In Command and In Demand

- One of the most influential and widely used sires in Australia in recent years
- Impeccable ABS calving ease and maternal tabulation with Complement, Hoover Dam and Styles Upgrade up close in this pedigree
- Deep, thick, and square made, Command adds serious style to his progeny
- Progeny stand out from both a type and data perspective with impeccable structure
- High HCR semen fertility in conventional and Sexcel® female and male
- Sons in Australia are well accepted for their strong, wide top line, muscle depth, soundness and great docility

Reg. No.	USA18219911
Born	13/01/2015
Birth Weight	31kg
Weight 205 days	378kg
Weight 365 days	660kg
SS 12 months	38.3cm
FS	6

EF Complement 8088
EF Commando 1366
 Riverbend Young Lucy W1470
 Hoover Dam
Baldrige Blackbird A030
 Baldrige Blackbird X89

	CE-DIR	CE-DT	GL	BW	200D	400D	600D	MCW	Milk	DTC	SS	DOC	CWT	EMA	Rib	Rump	RBV	IMF	NFI-F	Claw	Foot	Leg	\$A	\$A-L
EBV	+8.7	+5.6	-7.9	+2.7	+61	+106	+128	+83	+21	-4.4	+0.3	+25	+74	+11.8	-3.7	-5.3	+1.7	+1.4	+0.13	+0.80	+0.80	+0.98	\$268	\$417
ACC	92%	76%	99%	99%	98%	98%	98%	96%	95%	62%	98%	98%	92%	91%	91%	90%	87%	91%	73%	98%	98%	96%		
%Rank	7	23	10	22	10	12	27	77	18	57	96	26	27	6	99	99	3	69	43	40	14	31	2	6

EBVs as at Mid-July 2023 **TOP 20%**



TAILOR MADE

(AMF,CAF,DDF,NHF,DWF,MAF,MHF,OHF,OSF,RGF)

Sitz Tailor Made 448H | 29AN2216 | Owned by: Sitz Angus Farm, MT; ABS Global, Inc., WI



Sire: Baldrige Command



Maternal Brother: Stellar

Reg. No.	USA19841441
Born	22/01/2020
Birth Weight	45kg
Weight 205 days	383kg
Weight 365 days	621kg
Weight 18 months	740kg
SS 12 months	38cm
YFS	6.6

EF Commando 1366
Baldrige Command C036
 Baldrige Blackbird A030

Connealy Final Product
Sitz Pride 200B
 Sitz Pride 308Y

Genetics That Suit

- The hotly anticipated sire for Australian breeders in the 2023 spring season
- Sired by Command and out of Stellar's dam, a tailor-made breeding of two of the most popular bloodlines in Australia
- Combines two of the strongest females in the breed for transmitting muscle, maternal and foot quality
- Appreciate the raw power and depth of rib that Tailor Made offers
- The next logical step for breeders looking to follow on from the success of both Stellar and Command
- Awesome progeny reports throughout Australia with youngsters exhibiting immaculate foot quality, extreme mass and topline thickness
- 2022 inspection showed Tailor Made's extreme length, spring of rib and terrific front end set-up with a thumping hind quarter

	CE-DIR	CE-DT	GL	BW	200D	400D	600D	MCW	Milk	DTC	SS	DOC	CWT	EMA	Rib	Rump	RBV	IMF	NFI-F	Claw	Foot	Leg	\$A	\$A-L
EBV	+6.1	+7.3	-10.0	+3.7	+66	+118	+146	+116	+17	-4.9	+1.7	+12	+81	+10.8	-1.9	-4.4	+1.7	+0.5	+0.32	+0.82	+0.96	+1.02	\$268	\$446
ACC	70%	53%	94%	92%	85%	83%	81%	79%	77%	42%	77%	66%	77%	75%	72%	69%	67%	77%	55%	80%	80%	67%		
%Rank	22	10	2	41	3	2	6	25	50	43	64	87	13	9	87	97	3	89	68	44	47	45	2	2

EBVs as at Mid-July 2023 **TOP 20%**

RECTOR

(AMF,CAF,DDF,NHF,DWF,MAF,MHF,OHF,OSF,RGF)

Millah Murrah Rector R53 | 29AN2285 | Owned by: DR & J, DA Rowley



Beautifully Made

- Rector's contribution to the Australian Angus breed is manifested in the superb quality of progeny both at Millah Murrah and owners Springwaters Angus
- Son of the well know Nectar N334, Rector's awe inspiring physical presence and immaculate data set renders him the ultimate outcross to Paratrooper P15 and Quixote Q96 bloodlines
- Backed by generations of Millah Murrah and Coonamble Angus royalty deep into the pedigree, it is little wonder R53's structural EBVs are so impressive
- Phenotypically, Rector R53 has received outstanding reviews from the most astute breeders across the country and New Zealand who have travelled to inspect the bull

Reg. No.	NMMR53
Born	30/01/2020
Birth Weight	33kg
Weight 15 months	614kg
SS 15 months	38cm

Coonamble Hector H249
Millah Murrah Nectar N334
 Millah Murrah Prue H113
 Ascot Hallmark H147
Millah Murrah Brenda N72
 Millah Murrah Brenda K62

	CE-DIR	CE-DT	GL	BW	200D	400D	600D	MCW	Milk	DTC	SS	DOC	CWT	EMA	Rib	Rump	RBV	IMF	NFI-F	Claw	Foot	Leg	\$A	\$A-L
EBV	+2.1	+0.6	-10.2	+4.4	+40	+73	+104	+78	+16	-5.0	+2.0	+36	+52	+10.2	+3.4	+3.1	+0.1	+3.9	+0.23	+0.48	+0.50	+0.82	\$205	\$328
ACC	69%	51%	95%	94%	86%	84%	81%	78%	66%	42%	78%	74%	71%	68%	70%	70%	64%	70%	56%	64%	65%	63%		
%Rank	56	73	2	57	89	90	77	83	56	40	52	5	87	12	3	6	71	11	56	2	1	4	45	63

EBVs as at Mid-July 2023 **TOP 20%**

QUARTER POUNDER

(AMF,CAF,DDF,NHF,DWF,MAF,MHF,OHF,OSF,RGF)

Banquet Quarter Pounder Q252 | 29AN2203 | Owned by: Alpine, Keringa, Millah Murrah, ABS Australia



I'm Loving It

- Like every great Quarter Pounder – he's full of meat!
- \$60,000 sale topper at Banquet 2021 autumn sale
- Awesome muscle expression, weight for age, deep bodied with a tonne of power
- Balanced, versatile EBV set featuring added growth and impressive top 2% scrotal
- Pedigree loaded with great Banquet ancestry
- Q252's dam has calved each year with a 366-day spread and g-dam J248 has calves every spring!
- Quarter Pounder's pedigree is solid gold, four crosses of the Kiwi Dream M41+92, matriarch to many great Angus cattle including being gdam of Dream Y301 and four crosses of Hingaia 469
- First calves at Millah Murrah are seriously thick!!

Reg. No.	VONQ252
Born	06/08/2019
Birth Weight	41kg
Weight 200 days	340kg
Weight 400 days	625kg
Sale day weight	880kg
SS 15 months	47cm
FS	6.5

Sitz New Design 458N
Merridale Gaffa G4
 Vermont Dream E096
 Millah Murrah Jupiter J194
Banquet Kite L131
 Banquet Kite J428

	CE-DIR	CE-DT	GL	BW	200D	400D	600D	MCW	Milk	DTC	SS	DOC	CWT	EMA	Rib	Rump	RBV	IMF	NFI-F	Claw	Foot	Leg	\$A	\$A-L
EBV	+3.4	+2.9	-5.6	+3.7	+46	+96	+127	+90	+24	-3.3	+4.5	+25	+68	+8.9	+0.6	+0.0	+0.4	+2.6	+0.19	+0.80	+0.92	+1.08	\$201	\$341
ACC	70%	52%	97%	97%	92%	90%	85%	81%	70%	45%	84%	86%	75%	73%	75%	75%	70%	73%	56%	60%	60%	57%		
%Rank	45	51	36	41	68	34	29	66	7	83	2	27	43	21	34	44	53	35	51	40	37	65	50	53

EBVs as at Mid-July 2023 **TOP 20%**



QUIXOTE

(AMF,CAF,DDF,NHF,DWF,MAF,MHF,OHF,OSF,RGF)

Millah Murrah Quixote Q96 | 29AN2174 | Owned by: Woonallee, JT Angus, Millah Murrah and ABS Australia



Dam: Brenda N8



Paternal Gdam: Blossom 0278



Full Sister: Brenda Q30

Reg. No.	NMMQ96
Born	08/03/2019
Birth Weight	40kg
Weight 200 days	355kg
Weight 400 days	568kg
Weight 18 months	836kg
SS 18 months	45cm
FS	6

S Chisum 6175

S Chisum 255

S Blossom 0278

Millah Murrah Klooney K42

Millah Murrah Brenda N8

Millah Murrah Brenda L73

Ode To The Great

- With outstanding phenotype and structure, useful pedigree diversity, brilliant maternal background and a balanced easy to apply EBV set, Quixote combines all the elements of the truly great stud sires
- \$60,000 top selling bull from the 2020 Millah Murrah sale
- Q96's maternal quality is unsurpassed in the breed worldwide, combined with his awesome physical dimension and composition, he is generating enormous interest
- Strong headed with excellent feet, full flank, meat throughout the top line
- Clear 1st amongst contemporary group for ADG
- A go to bull for breeders looking to access one of Australia's most renowned maternal lines

	CE-Dir	CE-DT	GL	BW	200D	400D	600D	MCW	Milk	DTC	SS	DOC	CWT	EMA	Rib	Rump	RBV	IMF	NFI-F	Claw	Foot	Leg	\$A	\$A-L
EBV	+1.1	+8.9	-3.8	+3.5	+58	+89	+117	+79	+24	-5.8	+3.5	+8	+73	+9.3	-1.1	-3.1	+0.9	+2.6	+0.67	+0.78	+1.04	+1.08	\$243	\$377
ACC	79%	56%	98%	98%	97%	97%	95%	85%	71%	48%	95%	96%	78%	82%	81%	81%	75%	80%	60%	90%	89%	86%		
%Rank	64	3	66	37	17	54	50	82	8	21	9	95	28	17	73	90	23	35	94	36	67	65	10	24

EBVs as at Mid-July 2023 **TOP 20%**

BLACK BANDOLIER

Quaker Hill Black Bandolier | 29AN2275 | Owned by: Quaker Hill Farm LLC, VA; Emma Hoerichs, VA; O'Leary Cattle Co LLC, MO; Patrick Comyn, VA; Viebrock Cattle Co LLC, MO; Little Kansas Farm LLC, PA; Mossy Spring Angus, VA; ABS Global, Inc., WI



A Unique Blend

- Unique blend of legendary Angus programs, sires and pedigrees delivers this outstanding young powerhouse
- Incredibly docile, standing on sound feet and legs, his length and depth lends itself to mass, raw kg's of beef wrapped up in a slick phenotypic package
- Admire the low BW to massive growth spread, combined with high milk, docility and marbling EPDs

USA Reg. No.	USA20199493
Born	23/09/2021
Birth Weight	32kg
Weight 205 days	345kg

Cherry Creek Land Grant
Connealy Clarity
 Breshie of Conanga 6988

G A R Ashland
Quaker Hill BlackcapMay 9A27
 Quaker Hill BlackcapMay 7R81

	\$EN	\$M	\$W	\$F	\$G	\$B	\$C	AxH	AxJ
INDEX	-44	+74	+92	+141	+81	+222	+362	+225	+225
%Rank	95	25	1	1	10	1	1	1	1

	CED	BW	WW	YW	RADG	DMI	YH	SC	HP	CEM	MILK	MW	MH	DOC	CLAW	ANGLE	PAP	HS	CW	MARB	REA	FAT
EPD	+15	-.8	+99	+181	+.39	+2.11	+1.0	+1.61	+14.4	+12	+29	+113	+1.0	+24	+.52	+.46	+4.04	+15	+96	+1.03	+1.04	-.025
ACC	.32	.53	.44	.36	.32	.32	.43	.39	.22	.26	.27	.33	.36	.34	.32	.32	.22	.29	.38	.34	.34	.30
%Rank	2	15	1	1	1	95	10	15	25	15	35	10	10	25	60	40	95	4	1	15	10	10

EPDs as at Mid-July 2023 **TOP 35%**

TRUE GRIT

Basin True Grit 1021 | 29AN2256 | Owned by: Basin Angus Ranch, MT; Noble Ranch, CO; ABS Global, Inc., WI



Highly Acclaimed

- Limited semen available for Spring 2023
- A young global sensation, True Grit is already in huge demand internationally on the back of Square B True North's prolific influence
- A stout, moderate, thick set bull out of the renowned Basin Angus program
- A unique bull to offer tremendous muscle, width and capacity yet usable within heifer programs
- Offers a double cross of the now famous Coleman Charlo 0256



USA Reg. No.	USA20072762
Born	11/01/2021
Birth Weight	32kg
Weight 12 months	389kg
SS	35cm

S A V Rainfall 6846
Square B True North 8052
 Elbanna of Conanga 1209
 Basin Rainmaker 4404
Basin Camilla 9044
 Basin Camilla 7026

	\$EN	\$M	\$W	\$F	\$G	\$B	\$C	AxH	AxJ
INDEX	-20	+73	+74	+91	+80	+171	+295	+188	+172
%Rank	65	20	15	40	10	15	10	4	10

	CED	BW	WW	YW	RADG	DMI	YH	SC	HP	CEM	MILK	MW	MH	DOC	CLAW	ANGLE	PAP	HS	CW	MARB	REA	FAT
EPD	+13	-1.7	+65	+121	+.28	+1.34	+1	+.71	+14.4	+11	+36	+59	+1	+22	+.44	+.51	-1.10	+15	+49	+1.16	+.96	+.056
ACC	.43	.62	.49	.44	.34	.34	.47	.49	.27	.32	.31	.39	.41	.46	.36	.36	.31	.34	.42	.38	.38	.36
%Rank	10	5	45	35	25	75	85	60	20	25	5	55	70	30	30	65	10	2	45	10	10	95

EPDs as at Mid-July 2023 **TOP 35%**



PATRIARCH

(AMF,CAF,DDF,NHF,DWF,MAF,MHF,OHF,OSF,RGF)

Tehama Patriarch F028 | 29AN2093 | Owned by: Tehama Angus Ranch, CA; ABS Global, Inc., WI



Patriarch Son: Kramers Bishop 002



Patriarch Mature Photo

Reg. No.	USA18981191
Born	03/02/2017
Birth Weight	28kg
Weight 205 days	268kg
Weight 365 days	510kg
Weight 33 months	832kg
SS 27 months	40cm
FS	5.6

Hoover Dam
S S Niagara Z29
 Jet S S X144

Connealy Thunder
Tehama Elite Blackbird D826
 Tehama Elite Blackbird Z630

Family Matters

- Record setter from the Tehama program and highlight of the 2018 USA fall selling season
- Admired for sound structure, foot quality and massive appearance with added foot angle
- Powerful phenotype bull with top 1% Calving Ease, explosive growth EBVs and excellent moderate mature cow weight EBVs
- Use Patriarch to add style, length of spine and evenness of type to your herd
- One of the top unit selling sires for ABS in 2022 across both seedstock and commercial herds, Patriarch has been sought after for his unique blend of length, softness and superb data spread
- First progeny in Australia are thumpers! Yearlings are displaying excellent softness and fleshing ability, are sound footed and extremely docile
- Available in male and female Sexcel®

	CE-DIR	CE-DT	GL	BW	200D	400D	600D	MCW	Milk	DTC	SS	DOC	CWT	EMA	Rib	Rump	RBY	IMF	NFI-F	Claw	Foot	Leg	\$A	\$A-L
EBV	+11.1	+6.8	-4.9	+0.5	+62	+121	+141	+102	+20	-5.4	+2.8	+29	+83	+9.4	+0.1	-0.1	+0.2	+2.0	-0.12	+0.84	+0.86	+0.76	\$272	\$452
ACC	72%	50%	96%	95%	92%	89%	85%	82%	80%	39%	79%	88%	82%	78%	75%	70%	69%	81%	54%	98%	97%	66%		
%Rank	1	13	47	3	8	2	10	47	23	29	23	16	10	17	45	46	66	52	16	49	24	2	2	1

EBVs as at Mid-July 2023 **TOP 20%**

JET STREAM

(AMF,CAF,DDF,NHF,DWF,MAF,MHF,OHF,OSF,RGF)

BCF Jet Stream 827 | 29AN2140 | Owned by: Bear Creek Farm, TX



Jet Black's Most Intriguing Son

- Highly sought-after sire, Jet Stream's first shipment sold out before he was even catalogued!
- Total package bull with outcross pedigree and phenotypic style!
- Superb calving ease, short gestation and low BW EBVs
- Awesome growth curve bending EBV's with a MCW in the lowest 20% of the breed
- Big carcass weight, big EMA; top 2% ABI and top 15% Foot Angle



Sire: Bar R Jet Black 5063

Reg. No.	USA19253598
Born	24/09/2018
Birth Weight	32kg
Weight 205 days	347kg
Weight 365 days	510kg
SS 16 months	37cm
FS 16 months	6

Connealy Black Granite
Bar R Jet Black 5063
 Bar R Iris Anita 0113
 OZH Ingenuity 275G
DBF Blackbird of 275G 1609
 DBF Blackbird of 10X 1412

	CE-DIR	CE-DT	GL	BW	200D	400D	600D	MCW	Milk	DTC	SS	DOC	CWT	EMA	Rib	Rump	RBV	IMF	NFI-F	Claw	Foot	Leg	\$A	\$A-L
EBV	+9.2	+8.9	-3.1	+0.9	+62	+105	+123	+81	+22	-3.0	+1.3	+10	+80	+13.6	-2.2	-4.5	+1.1	+2.8	-0.19	+0.98	+0.84	+0.98	\$265	\$414
ACC	60%	42%	93%	87%	85%	87%	83%	79%	74%	37%	85%	32%	78%	78%	76%	72%	68%	79%	52%	84%	84%	68%		
%Rank	5	3	76	5	7	13	36	80	15	88	78	91	15	2	90	97	14	31	11	76	20	31	3	7

EBVs as at Mid-July 2023 **TOP 20%**

JET BLACK

(AMF,CAF,DDF,NHF,DWF,MAF,MHF,OHF,OSF,RGF)

Bar R Jet Black 5063 | 237AN3190 | Owned by: Friendship Farms, GA; Five Star Land and Livestock, CA; Craig & JJ Reinhardt, CA



Jet Set Genetics

- Moderate framed, big boned, heavy muscled and sound footed Black Granite son
- Powerful combination of EPD spread and carcass traits with elite \$Weaning and \$Beef values
- A good mating choice for Journey, Discovery, Ten X derivatives and Rampage daughters to moderate frame, improve feet and legs and add body mass
- Traces back to a full sister to the Pathfinder® sire Bushwacker



Son: BCF Jet Stream 827



Son: LAR Man In Black

Reg. No.	USA18389838
Born	30/07/2015
Birth Weight	36kg
Weight 205 days	369kg
Weight 365 days	678kg
Weight Mature	1073kg
SS Mature	44cm

Connealy Consensus 7229
Connealy Black Granite
 Eura Elga of Conanga 9109
 Sitz Upward 307R
Bar R Iris Anita 0113
 Bar R Anita 7081

	CE-DIR	CE-DT	GL	BW	200D	400D	600D	MCW	Milk	DTC	SS	DOC	CWT	EMA	Rib	Rump	RBV	IMF	NFI-F	Claw	Foot	Leg	\$A	\$A-L
EBV	+2.8	+3.2	-1.7	+5.0	+75	+126	+153	+129	+15	-4.9	+2.4	+13	+99	+7.7	-3.4	-5.6	+1.0	+1.1	-0.61	+1.10	+0.94	+1.08	\$260	\$439
ACC	65%	49%	89%	87%	87%	87%	85%	82%	81%	43%	83%	51%	82%	80%	77%	73%	71%	82%	56%	97%	96%	63%		
%Rank	50	48	90	70	1	1	3	12	65	43	36	82	1	31	98	99	18	77	1	91	42	65	3	2

EBVs as at Mid-July 2023 **TOP 20%**



TRUE NORTH

(AMF,CAF,DDF,NHF,DWF,MAF,MHF,OHF,OSF,RGF)

Square B True North 8052 | 29AN2144 | Owned by: R & L Angus, KS; Lonker Cattle Co., CA; ABS Global, Inc., WI



Son: Basin True Grit 1021



True North: November 2022 US Trip



True North Son: Bulliac Angus

Reg. No.	USA19405246
Born	16/08/2018
Birth Weight	40kg
Weight 205 days	337kg
Weight 365 days	545kg
Weight 20 months	768kg
SS 17 months	41.5cm
FS	6

Coleman Charlo 0256
S A V Rainfall 6846
 S A V Blackcap May 4136

Connealy Consensus
Elbanna of Conanga 1209
 Elbasta of Conanga 9703

True Maternal Direction

- Eye-catching style with awesome length of spine, top line strength and hindquarter thickness
- True North is a deep bodied powerhouse who moves faultlessly and is as smooth as a cat
- Appreciate the ultra-low birth weight, calving ease and overall EBV balance that the bull offers
- Strong headed with immense presence and sire appeal
- True North descends from the famous Coleman Charlo 0256 x S A V Blackcap May 4136 flush
- Awesome reports on young progeny across Australia – deep, thick and square made!
- November 2022 inspection – True North is a bull of extreme power and mass, awesome topped and deep, square and wide from all angles

	CE-DIR	CE-DT	GL	BW	200D	400D	600D	MCW	Milk	DTC	SS	DOC	CWT	EMA	Rib	Rump	RBV	IMF	NFI-F	Claw	Foot	Leg	\$A	\$A-L
EBV	+8.8	+5.9	-8.5	+0.8	+57	+108	+124	+73	+22	-4.0	+2.1	+20	+72	+9.7	+1.3	+0.6	+0.1	+2.4	+0.06	+0.84	+0.96	+1.00	\$259	\$408
ACC	66%	46%	94%	92%	86%	84%	84%	79%	65%	40%	76%	73%	72%	71%	72%	72%	67%	73%	53%	76%	76%	56%		
%Rank	6	20	7	4	19	9	34	87	14	68	48	50	33	15	21	33	71	41	34	49	47	38	4	9

EBVs as at Mid-July 2023 **TOP 20%**

JAMESON

(AMF,CAF,DDF,NHF,DWF,MAF,MHF,OHF,OSF,RGF)

Basin Jameson 1076 | 29AN2255 | Owned by: ABS Global, Inc., WI



Raise a Glass

- Available 2024
- US \$600,000 Montana record setting sire and the most unique herd sire ever produced at Basin Angus
- Combines tremendous data across the board with powerful phenotype
- Exceptionally long bodied, strong topped, deep through the ribs and wide from behind
- Combines his enormous growth and carcass data with top 16% structural EBVs

Reg. No.	USA20071781
Born	18/01/2021
Birth Weight	31.7kg
Weight 205 days	378kg
Weight 365 days	613kg
SS 12 months	38cm
FS	6.2

Basin Advance 3134
Basin Deposit 6249
 Basin Lucy 4288
 EXAR Monumental 6056B
Basin Joy 9140
 Basin Joy 5367

	CE-DIR	CE-DT	GL	BW	200D	400D	600D	MCW	Milk	DTC	SS	DOC	CWT	EMA	Rib	Rump	RBV	IMF	NFI-F	Claw	Foot	Leg	\$A	\$A-L
EBV	+2.2	+3.0	-3.7	+5.0	+83	+140	+173	+150	+20	-1.5	+2.3	+16	+110	+7.3	-3.2	-5.2	+0.3	+3.5	-0.58	+0.82	+0.74	+0.92	\$261	\$448
ACC	46%	35%	64%	76%	78%	76%	74%	72%	71%	28%	70%	28%	71%	70%	65%	60%	58%	72%	44%	71%	72%	54%		
%Rank	56	50	67	71	1	1	1	3	28	97	40	68	1	36	97	99	59	17	1	44	7	16	3	2

EBVs as at August 2023 **TOP 20%**

MAN IN BLACK

(AMF,CAF,DDF,NHF,DWF,MAF,MHF,OHF,OSF,RGF)

LAR Man In Black | 29AN2205 | Owned by: Larson Angus Ranch, KS; ABS Global, Inc., WI



No Aliens Here

- A man amongst boys from a young age
- Combines tremendous base width and muscle with exceptional substance, rib shape and length of body
- Described by many astute breeders as the most powerful Angus bull they've seen in recent years
- Unique data and imposing phenotype make for as stout a power bull package as we know how to make

Reg. No.	USA19955191
Born	27/01/2020
Birth Weight	40kg
Weight 205 days	360kg
Weight 365 days	677kg
Weight 18 months	788kg
SS 12 months	40cm
YFS	6.5

Connealy Black Granite
Bar R Jet Black 5063
 Bar R Iris Anita 0113
 Sitz Top Game 561X
JMB Maxine TG 2131
 JMB Maxine Deluxe 9034



	CE-DIR	CE-DT	GL	BW	200D	400D	600D	MCW	Milk	DTC	SS	DOC	CWT	EMA	Rib	Rump	RBV	IMF	NFI-F	Claw	Foot	Leg	\$A	\$A-L
EBV	+6.7	+5.0	-7.7	+5.1	+79	+138	+171	+149	+20	-3.0	+2.4	+11	+107	+9.6	-1.8	-3.7	+0.2	+2.7	-0.29	+0.74	+0.74	+1.08	\$272	\$474
ACC	62%	42%	93%	92%	89%	83%	81%	78%	74%	32%	74%	58%	77%	73%	69%	64%	62%	75%	49%	77%	81%	56%		
%Rank	17	29	11	72	1	1	1	3	28	88	36	90	1	16	85	94	66	33	6	27	7	65	2	1

EBVs as at Mid-July 2023 **TOP 20%**



QUEENSLANDER

(AMF,CAF,DDF,NHF,DWF,MAF,MHF,OHF,OSF,RGF)

Clunie Range Queenslander Q311 | 29AN2170 | Owned by: Clunie Range Angus



Queenslander Q311 pictured as a yearling

Reg. No.	NBHQ311
Born	31/05/2019
Birth Weight	36kg
Weight 205 days	393kg
Weight 365 days	604kg
SS 13 months	37cm
FS	6

G A R Prophet
Baldrige Beast Mode B074
 Baldrige Isabel Y69

Connealy Earnan 076E
Aberdeen Estate Laura J81
 Tuwharetoa E111



Couch Pastoral Queenslander Progeny



Couch Pastoral Queenslander Progeny

The Heart of Australia

- The absolute 'wow factor', must use sire to enter the ABS line-up
- From same dam as Clunie Range Legend, Queenslander inherits so much of this incredible phenotype and power - it is uncanny!
- The poise, balance, docility and overall look of Queenslander makes him a must-have sire option for any breeding program
- Moderate birth weight, huge growth combined with fantastic foot structure EBVs
- Foot quality prince. Queenslander sits in the top 3% for Foot Angle and top 15% for Claw Shape
- Awesome field reports of young Queenslander progeny! Clients are absolutely raving about the thickness and presence that these Queenslanders express!
- Watch out for the stout Queenslander progeny to sell the Clunie Range sale in spring this year!

	CE-DIR	CE-DT	GL	BW	200D	400D	600D	MCW	Milk	DTC	SS	DOC	CWT	EMA	Rib	Rump	RBV	IMF	NFI-F	Claw	Foot	Leg	\$A	\$A-L
EBV	+4.2	+6.7	-7.5	+3.1	+64	+110	+137	+116	+14	-4.3	+1.2	+29	+78	+7.4	-0.4	-2.0	+0.1	+2.4	+0.21	+0.66	+0.68	+0.80	\$238	\$407
ACC	72%	60%	93%	92%	86%	86%	85%	80%	71%	52%	87%	63%	75%	74%	76%	75%	71%	75%	62%	73%	73%	70%		
%Rank	38	14	13	29	5	8	13	25	75	60	81	15	18	35	57	79	71	41	54	15	3	3	13	9

EBVs as at Mid-July 2023 **TOP 20%**

REVOLUTION

(AMFU,CAFU,DDFU,NHFU)

Brooklana Revolution R33 | 29AN2259 | Owned by: RK & JS Pryce



One For The Ages

- A purple royal mating – Paratrooper out of the legendary \$190,000 Millah Murrah Prue M4, one for those who love pedigree royalty!
- Super low, top 1% GL option with good growth, top 2% NFI and top 10% Claw EBVs
- Revolution has developed into an extraordinary young man, exemplifying the quality back deep in his pedigree
- From any angle, Revolution delights. He is beautifully headed, clean fronted with so much fill around the chine and loin down to the tail
- Structurally sound and young progeny are outstanding

Reg. No.	AMQR33
Born	30/08/2020
Weight 298 days	374kg
Weight 400 days	484kg

EF Commando 1366
Millah Murrah Paratrooper P15
 Millah Murrah Ela M9

Coonamble Hector H249
Millah Murrah Prue M4
 Millah Murrah Prue F141

	CE-DIR	CE-DT	GL	BW	200D	400D	600D	MCW	Milk	DTC	SS	DOC	CWT	EMA	Rib	Rump	RBV	IMF	NFI-F	Claw	Foot	Leg	\$A	\$A-L
EBV	+4.3	+3.5	-11.1	+6.2	+63	+104	+135	+122	+17	-4.6	+2.7	+22	+79	+6.8	-2.1	-3.5	+1.4	-0.4	-0.53	+0.62	+0.90	+1.02	\$212	\$377
ACC	65%	52%	73%	76%	76%	74%	74%	72%	65%	39%	72%	60%	65%	64%	65%	65%	60%	67%	53%	68%	68%	66%		
%Rank	37	45	1	89	6	15	17	18	47	51	26	37	16	42	89	93	7	98	2	10	32	45	37	25

EBVs as at Mid-July 2023 **TOP 20%**

ELEVATOR

(AMF,CAF,DDF,NHF,MAF)

Coonamble Elevator E11 | 29AN1841 | Owned by: Milwillah Angus, Nairn Park, Coonamble Angus



The Next Level

- The oldest and one of the most widely used gems of the Angus breed, still in demand even in to spring of 2023
- Elevator possesses so much class and quality, transpiring through his progeny still to this day
- Use Elevator to produce progeny that have high growth and weight gains
- Superb structure, top 3% Angle, top 17% Claw, very quiet progeny (top 1%)
- Internationally used
- Daughters continue to appear in many breed leading bull pedigrees, admired for their immaculate foot structure, and powerful, broody phenotypes

Reg. No.	WDCE11
Born	06/03/2009
Weight 19 months	778kg
SS 19 months	41cm
Weight Mature	1155kg

B S S Limited Design
Coonamble Z3
 Imran Rosebud U17

Koojan Hills Xcell W29
Bangadang B31
 Bangadang Wilcoola Y1

	CE-DIR	CE-DT	GL	BW	200D	400D	600D	MCW	Milk	DTC	SS	DOC	CWT	EMA	Rib	Rump	RBV	IMF	NFI-F	Claw	Foot	Leg	\$A	\$A-L
EBV	-10.0	-5.2	-1.5	+7.2	+62	+117	+160	+190	+14	-0.5	+1.2	+54	+86	+7.5	-2.7	-0.6	+0.9	-0.4	-0.25	+0.68	+0.66	+0.82	\$113	\$276
ACC	96%	87%	99%	99%	98%	98%	98%	97%	98%	80%	98%	97%	96%	95%	95%	95%	94%	94%	86%	96%	96%	93%		
%Rank	98	97	91	96	7	3	2	1	76	99	81	1	7	34	94	55	23	98	8	18	3	4	98	88

EBVs as at Mid-July 2023 **TOP 20%**

SMOKIN JO

(AMFU,CAFU,DDFU,NHFU)

Ben Nevis Smokin Jo S146 | 29AN2281 | Owned by: Merit Farms



Reg. No.	NBN21S146
Born	08/02/2021
Birth Weight	35kg
400 day Weight	603kg
SS	40cm
FS	6

G A R Sure Fire 6404
GB Fireball 672
 GB Anticipation 432
 Baldrige Beast Mode B074
Ben Nevis Floryx Q6
 Ben Nevis Floryx N18

Smokin' Hot Phenotype, Data to Burn

- In an industry of breeding high quality red meat, this bull is the no brainer, sleep easy, commercial breeder's dream!
- A bull we could not pass on in spring of 2022! With a highly recognised proven pedigree (Fireball X Beastmode) with an impressive heifer bull data set and big performance phenotype to boot!
- Like the Angus of old, his constitution is reflected in how closely he is muscled to the hock and his balance is reflected in his hip to pin. Showcasing a huge butterfly top and spring of rib
- Smokin Jo is a gentleman to handle and has been used extensively in the Merit program over spring and the Ben Nevis progeny program

	CE-DIR	CE-DT	GL	BW	200D	400D	600D	MCW	Milk	DTC	SS	DOC	CWT	EMA	Rib	Rump	RBV	IMF	NFI-F	Claw	Foot	Leg	\$A	\$A-L
EBV	+10.1	+8.4	-7.0	-0.4	+51	+87	+117	+68	+24	-6.1	+2.6	+14	+63	+7.2	+0.8	+1.7	-0.3	+4.1	+0.21	+1.02	+0.96	+0.86	\$258	\$405
ACC	63%	49%	72%	74%	74%	72%	73%	71%	65%	37%	70%	57%	64%	64%	64%	64%	58%	67%	51%	75%	75%	70%		
%Rank	3	5	17	1	43	60	50	91	6	15	29	80	59	37	30	17	88	9	54	82	47	7	4	10

EBVs as at Mid-July 2023 **TOP 20%**

BROADVIEW

(AMF,CAF,DDF,NHF,DWF,MAF,MHF,OHF,OSF,RGF)

Heiken Broadview | 29AN2151 | Owned by: Ben Heiken Angus, MT; ABS Global, Inc., WI



Reg. No.	USA19421003
Born	20/01/2019
Birth Weight	30kg
Weight 205 days	358kg
Weight 365 days	634kg
Weight 15 months	620kg
SS 14 months	42cm

Connealy Spur
Vermilion Spur E119
 Vermilion Lass 4071
 Sitz Logo 12964
JCH BHA Karen 7815
 JCH Karen 5130

Clarity For Miles

- Tremendous side-profile exhibiting great extension throughout and very clean fronted
- Deep bodied, attractive bull exhibiting good base width from behind for a calving ease sire, with a little added length of spine
- Very good feet; a sound and practical bull that will make an impact
- Pleasing progeny reports across Australia, Broadview is certainly adding much needed muscle and length to his progeny
- A safe heifer option with potent growth data, big scrotal and carcass weight EBV offering
- Admire the raw data that Broadview exhibits to match his impressive EBV profile!

	CE-DIR	CE-DT	GL	BW	200D	400D	600D	MCW	Milk	DTC	SS	DOC	CWT	EMA	Rib	Rump	RBV	IMF	NFI-F	Claw	Foot	Leg	\$A	\$A-L
EBV	+7.2	+7.0	-8.9	+2.4	+68	+114	+137	+114	+13	-3.2	+4.6	+21	+85	+7.9	-2.6	-4.4	+0.8	+2.3	+0.01	+1.04	+0.96	+0.88	\$244	\$419
ACC	63%	38%	97%	97%	93%	93%	89%	82%	72%	33%	90%	85%	79%	78%	76%	73%	68%	78%	48%	93%	91%	60%		
%Rank	14	12	5	17	2	4	13	27	80	85	2	45	8	29	94	97	28	43	28	85	47	9	9	5

EBVs as at Mid-July 2023 **TOP 20%**

DYNAMIC

(AMF,CAF,DDF,NHF,DWF,MAF,MHF,OHF,OSF,RGF)

B A R Dynamic | 29AN2218 | Owned by: Brinkley Angus, MO; ABS Global, Inc., WI



Dynamic Data and Dynamic Phenotype

- A dynamic physical presence that starts with impressive muscle, base width and internal dimension wrapped up in an attractive, eye-catching package that looks good from all angles
- As sound, comfortable and confident on the move as any 772kg yearling we've ever seen with added depth of heel and near perfect foot shape
- His grandam is described by Jim Brinkley as the best cow he's ever owned
- His dam is also a perfect footed young cow with a 340 day calving interval and she produced the top IMF scanning bull of the 2019 Brinkley calf crop

Reg. No.	USA19923789
Born	24/01/2020
Birth Weight	31kg
Weight 205 days	402kg
Weight 365 days	572kg
Weight 33 months	998kg

Basin Payweight 1682
Deer Valley Growth Fund
 Deer Valley Rita 36113
 Three Trees Xceptional B0048
B A R Blackcap 7235-B0048
 B A R Blackcap 3683-745

	CE-DIR	CE-DT	GL	BW	200D	400D	600D	MCW	Milk	DTC	SS	DOC	CWT	EMA	Rib	Rump	RBV	IMF	NFI-F	Claw	Foot	Leg	\$A	\$A-L
EBV	-1.1	+5.3	-5.1	+2.2	+73	+134	+166	+156	+15	-2.5	+2.0	+12	+94	+7.6	-2.8	-6.1	+0.3	+2.3	-0.40	+1.02	+0.96	+0.88	\$219	\$406
ACC	53%	42%	65%	77%	78%	77%	75%	73%	73%	33%	73%	33%	73%	72%	68%	63%	61%	74%	48%	84%	84%	59%		
%Rank	78	26	44	15	1	1	1	2	65	93	52	87	2	32	95	99	60	43	3	82	47	9	29	9

EBVs as at Mid-July 2023 **TOP 20%**

FIREBALL

(AMF,CAF,DDF,NHF,DWF,MAF,MHF,OHF,OSF)

GB Fireball 672 | 29AN2099 | Owned by: Grand Bayou Farms, LA; Goode Angus, TX; ABS Global, Inc., WI



Sure Fire Winner

- A unique curve bender producing awesome progeny
- Super impressive calving ease, low birth and BIG growth coupled with impressive scrotal EBVs
- Admire Fireball's carcass attributes – a staggering +13.9 EMA and +4.8 IMF combination with impressive +1.1 RBV EBVs
- Phenotypically, Fireball impresses with a tight sheath, good shaped scrotal, well shaped feet, good head carriage, strong top, immaculate tail placement and no white
- Calving reports on heifers are fantastic. Weaners are receiving rave reviews

Reg. No.	USA18690054
Born	20/10/2016
Birth Weight	18kg
Weight 205 days	230kg
Weight 365 days	477kg
SS Mature	39cm
Weight Mature	1000kg
FS	5+

G A R Sure Fire
G A R Sure Fire 6404
 G A R Complete N281
 G A R Anticipation
GB Anticipation 432
 GB Ambush 269

	CE-DIR	CE-DT	GL	BW	200D	400D	600D	MCW	Milk	DTC	SS	DOC	CWT	EMA	Rib	Rump	RBV	IMF	NFI-F	Claw	Foot	Leg	\$A	\$A-L
EBV	+2.6	+5.4	-5.1	+2.6	+62	+99	+129	+117	+17	-6.4	+2.8	+7	+78	+13.9	-2.3	-3.7	+1.1	+4.8	-0.25	+0.96	+0.92	+0.88	\$275	\$446
ACC	89%	65%	99%	99%	98%	98%	98%	95%	89%	47%	98%	98%	88%	88%	86%	84%	79%	88%	61%	99%	99%	94%		
%Rank	52	25	44	20	8	25	25	23	48	11	23	96	18	2	91	94	14	4	8	73	37	9	1	2

EBVs as at Mid-July 2023 **TOP 20%**

KEYSTONE

(AMF,CAF,DDF,NHF,DWF,MAF,MHF,OHF,OSF,RGF)

Landfall Keystone K132 | 29AN2078 | Owned by: Archer Landfall



The Keystone of Your Success

- Proven calving ease sire, with progeny that perform and exceptional daughters
- Beautifully balanced bull with superb feet and legs on visual appraisal
- Docile, long, deep bodied with great head and neck carriage
- 126 herds with 2571 progeny analysed and 1629 genomically tested
- Top 10% for 9 indexes
- Dam family line features g-dam Archer X9 with two stud sons, and flows back to Joyle C22 and Archer C170, two iconic cows of the Landfall herd
- The true mark of Keystone is the fabulous females he has produced around Australia

Reg. No.	TFAK132
Born	19/07/2014
Birth Weight	30kg on 19/7
Weight 200 days	267kg
Weight 400 days	522kg
Weight 600 days	728kg
SS 24 months	39cm
FS 24 months	7

Booroomooka Undertaken Y145

Rennylea Edmund E11

Lawsons Henry VIII Y5

S A V Front Runner 0713

Landfall Archer H807

Landfall Archer X9

	CE-DIR	CE-DT	GL	BW	200D	400D	600D	MCW	Milk	DTC	SS	DOC	CWT	EMA	Rib	Rump	RBV	IMF	NFI-F	Claw	Foot	Leg	\$A	\$A-L
EBV	+5.0	+9.7	-7.9	+2.2	+56	+109	+141	+118	+13	-5.6	+0.5	+25	+102	+5.6	+1.9	+0.8	+0.2	+2.0	+0.29	+0.82	+1.18	+1.14	\$245	\$427
ACC	96%	84%	99%	99%	99%	99%	99%	98%	97%	75%	98%	98%	95%	93%	94%	94%	92%	92%	81%	97%	97%	95%		
%Rank	31	2	10	15	24	9	10	22	79	25	94	28	1	57	13	29	66	52	64	44	89	81	9	4

EBVs as at Mid-July 2023 **TOP 20%**

KRUSE TIME

(AMF,CAF,DDF,NHF,MAF,RGF)

Millah Murrah Kruse Time K400 | 29AN2080 | Owned by: Sheron Farm and Millah Murrah Angus



Heir to the Maternal Crown

- An unadorned reminder of all that is great about the Angus breed
- K400 displays incredible fleshing and doing ease with extreme agility
- Superb maternal pedigree and structurally flawless
- Appreciate the cow-making legends of Hingaia 469, Right Time 24J stacked in his pedigree
- Kruse Time daughters wow the crowd with their combination of thickness, do-ability and tremendous udder quality
- Kruse Time sons continue to be in demand around the country due to their immaculate foot quality and deep, thick, soft phenotype

Reg. No.	NMMK400
Born	23/08/2014
Weight Mature	1075kg
SS 24 months	40cm
FS	5.7

Leachman Right Time

BT Right Time 24J

Sitz Everelda Entense 1905

Crusader Of Stern AB

Millah Murrah Ela A204

Millah Murrah Ela Y46

	CE-DIR	CE-DT	GL	BW	200D	400D	600D	MCW	Milk	DTC	SS	DOC	CWT	EMA	Rib	Rump	RBV	IMF	NFI-F	Claw	Foot	Leg	\$A	\$A-L
EBV	-0.9	-4.7	-1.2	+3.5	+45	+80	+108	+110	+12	-3.2	+0.0	+14	+56	+4.4	+1.7	+2.2	-0.4	+2.0	-0.24	+0.88	+1.02	+1.16	\$137	\$263
ACC	85%	73%	97%	97%	96%	96%	95%	93%	92%	62%	95%	94%	87%	85%	87%	86%	82%	85%	70%	82%	84%	78%		
%Rank	77	96	93	37	71	78	70	32	85	85	98	77	80	72	15	12	91	52	8	57	62	85	94	91

EBVs as at Mid-July 2023 **TOP 20%**

KINGDOM

(AMF,CAF,DDF,NHF,MAF,RGF)

Millah Murrah Kingdom K35 | 29AN1954 | Owned by: Witherswood, Gilmandyke, Ascot, Millah Murrah & ABS Australia



Structure King

- \$150,000 top selling bull at 2015 Millah Murrah sale
- Exceptional female maker, adding superb structure, style and softness to his progeny
- Dam, Flower G41, is a matriarch of the Australian Angus breed with 7 other sons sell to average \$20,500
- Kingdom's daughters continue to thrive in stud and commercial herds around the country, offering the ultimate maternal package and exude softness and structural quality
- Use Kingdom to add power, length, softness and some frame to his progeny

Reg. No.	NMMK35
Born	29/01/2014
Birth Weight	40kg
Weight 205 days	364kg
Weight 365 days	556kg
Weight 18 months	854kg
SS	40cm
FS	6.4

Waitara Valley Tex
Hingaia 469
 Hingaia 910
 BT Right Time 24J
Millah Murrah Flower G41
 Millah Murrah Flower C15

	CE-DIR	CE-DT	GL	BW	200D	400D	600D	MCW	Milk	DTC	SS	DOC	CWT	EMA	Rib	Rump	RBV	IMF	NFI-F	Claw	Foot	Leg	\$A	\$A-L
EBV	-13.1	-7.7	-2.6	+9.0	+55	+99	+139	+150	+10	-5.6	+0.8	+26	+63	+7.6	+0.2	+0.5	+1.0	-0.7	-0.69	+0.82	+1.26	+1.18	\$137	\$272
ACC	95%	87%	99%	99%	98%	98%	98%	97%	98%	79%	98%	97%	96%	94%	95%	95%	93%	94%	88%	96%	96%	94%		
%Rank	99	99	82	99	27	25	12	3	93	25	90	24	61	32	43	35	18	99	1	44	95	88	94	89

EBVs as at Mid-July 2023 **TOP 20%**

MILESTONE

(AMF,CAF,DDF,NHF,DWF,MAF,MHF,OHF,OSF,RGF)

Sitz Milestone | 29AN2217 | Owned by: Ashley R Sitz, MT



We've Made It

- Exciting Accomplishment son from the 2021 Sitz spring sale
- Accomplishment sons were among the most in-demand sons at the recent Sitz Angus sale for their consistent type and performance
- His 11-year old Pathfinder dam has maintained a 363 day calving interval
- Milestone offers a superb EBV growth profile top 1%
- Appreciate his rare high scrotal, milk and carcass weight combination
- Stout bull with excellent sire outlook/appeal
- Excellent top 1% Foot Angle EBV and top 3% Leg Angle EBV

Reg. No.	USA19677875
Born	01/02/2020
Birth Weight	41kg
Weight 205 days	393kg
Weight 365 days	610kg
Weight 17 months	750kg
SS 13 months	38cm
YFS	6.2

Poss Achievement
Sitz Accomplishment 720F
 Sitz Barbaramere Nell 166D
 Sitz Upward 307R
Talon Everelda 0179
 Riverbend Everelda 3179

	CE-DIR	CE-DT	GL	BW	200D	400D	600D	MCW	Milk	DTC	SS	DOC	CWT	EMA	Rib	Rump	RBV	IMF	NFI-F	Claw	Foot	Leg	\$A	\$A-L
EBV	+0.0	+4.2	-4.3	+4.6	+70	+127	+161	+138	+22	-3.4	+3.2	+15	+96	+7.1	-2.0	-2.6	+0.7	+0.5	-0.37	+0.76	+0.58	+0.80	\$226	\$403
ACC	55%	42%	83%	80%	81%	79%	77%	75%	74%	35%	73%	32%	74%	73%	69%	64%	62%	75%	50%	69%	69%	54%		
%Rank	72	37	57	62	1	1	2	6	14	82	14	74	2	38	88	86	34	89	4	31	1	3	22	11

EBVs as at Mid-July 2023 **TOP 20%**

NO SUBSTITUTE

(AMF,CAF,DDF,NHF,DWF,MAF,MHF,OHF,OSF,RGF)

Wilks No Substitute 2358 | 29AN2204 | Owned by: Wilks Ranch Texas Ltd., TX



Reg. No.	USA19720337
Born	13/03/2020
Birth Weight	35kg
Weight 205 days	295kg
Weight 365 days	597kg
Weight 16 months	645kg
SS 12 months	33cm
YFS	7.2

Poss Easy Impact 0119
Baldrige Alternative E125
 Baldrige Blackbird A030
 Quaker Hill Rampage 0A36
Vintage Blackbird 6237
 V A R Blackbird 3523

For Quality

- Solid maternal foundation with breed leading \$Beef and \$Combined indexes
- Even better type and kind with tremendous thickness and substance in an attractive, sound package with great feet and legs
- Moderate BW bull with explosive growth and muscle
- No Substitute's dam, Vintage Blackbird 6237 is sired by the highly acclaimed ABS legend Quaker Hill Rampage 0A36



Dam's sire, Quaker Hill Rampage 0A36

	CE-DIR	CE-DT	GL	BW	200D	400D	600D	MCW	Milk	DTC	SS	DOC	CWT	EMA	Rib	Rump	RBV	IMF	NFI-F	Claw	Foot	Leg	\$A	\$A-L
EBV	+1.7	+6.6	-3.9	+5.2	+73	+129	+156	+120	+13	-5.1	+1.1	+22	+109	+14.7	-2.5	-4.7	+1.6	+1.5	-0.41	+0.92	+0.76	+1.00	\$300	\$479
ACC	59%	42%	80%	81%	80%	79%	78%	75%	74%	35%	75%	55%	75%	74%	70%	66%	64%	75%	50%	71%	71%	65%		
%Rank	59	15	64	74	1	1	2	20	84	37	84	38	1	1	93	98	4	67	3	65	9	38	1	1

EBVs as at Mid-July 2023 **TOP 20%**

QUARTERBACK

(AMF,NHF,CAF,MAF,NT821F)

Nangara Quarterback Q1 | 187MG5494 | Owned by: Owen Cattle Co



Reg. No.	NGA Q1
Born	15/02/2019
Birth Weight	33kg
Weight 20 Months	709kg
FS	6+
SC	36cm
Grade	Purebred
Colour	Silver

Monterey Saratoga B13 (PB)
Monterey Major League M30 (PB)
 Monterey Joyce F20 (PB)
 Monterey Gangaster G260 (PB)
Nangara Melanie L10 (PB)
 Nangara Malanie H11 (PB)

Power, Style & Class

- All the hallmarks of a truly special young beef sire combining a superb blend of length and body depth in a frame 6+
- Sound footed, clean sheathed with good scrotal and an impressive muscle pattern
- Admire the strength of spine, thickness and tremendous bone that Quarterback possesses for a young sire of his age
- Quarterback's sire, Major League M30 boasts scintillating raw power in an impressive frame 6+ frame score, weighing a thumping 894kgs at 21 months
- Dam Nangara Melanie L10 has terrific shape and depth of body with an easy doing constitution, and her sire is a multi-trait leader for growth
- Appreciate the fabulous blend of data and phenotype that Quarterback Q1 offers

	CE-DIR	CE-DT	GL	BW	200D	400D	600D	MCW	Milk	SS	DTC	CWT	EMA	RIB	Rump	RBV%	IMF%	VTI	SI	HGI
EBV	0.4	1.6	-3.6	2.6	28	44	56	52	4	0.6	-	37	1.6	0.2	0.2	0.6	0	\$45	\$47	\$60
ACC	36%	28%	60%	77%	73%	66%	66%	57%	46%	46%	-	53%	35%	40%	40%	37%	33%			
%Rank	28	10	1	25	32	32	52	63	48	45		43	55	25	30	70	52	30	28	45

EBVs as at July 2023 **TOP 20%**

FINAL CUT

Suhn's Final Cut 894C33 (P) | 29BN0034 | Owned by: ABS Global, Inc., WI



Reg. No.	IMU15R894C33
USA Reg. No.	R10305062
Born	26/08/2015
Birth Weight	38kg
Weight 205 days	350kg
Weight 365 days	611kg
SS 12 months	39.5cm
Poll	Homo Polled
Colour	Homo Black

MC Revelation 129T (P)

CB Final Cut 924X (P)

RBM MS Guns 924T3 (P)

CB Hombre 541T3 (P)

Suhn's Miss Hombre 894Z32 (P)

Suhn's Miss Garrett 894U13 (P)

Making the Final Cut

- Genotypic and phenotypic difference maker
- Offers one of the most complete EPD packages the Brangus breed has seen in years with exceptional type and kind
- Phenotypically Final Cut is as complete, attractive and sound an individual as you will find

	GL	BW	200D	400D	600D	MCW	MILK	SS	CWT	EMA	RIB	RUMP	RBV%	IMF%	ESI	DSI
EBV	-1.4	-1.8	+13	+29	+25	+8	-3	+0.1	+16	-1.2	+0.5	+0.6	-0.6	+0.3	\$20	\$22
ACC	52%	59%	61%	61%	60%	54%	48%	60%	53%	40%	47%	46%	42%	43%		
%Rank	15	5	33	22	36	78	74	65	28	99	25	25	96	33	46	40

EBVs as at June 2023 **TOP 20%**

MATERNAL POWER

TJM Maternal Power 302H | 29BN0048 | Owned by: ABS Global, Inc., WI



Reg. No.	IMU20E302H
USA Reg. No.	UB10450386
Born	04/02/2020
Birth Weight	31kg
Poll	Homo Polled
Colour	Homo Black

PA Power Tool 9108 (P)

Raven Powerball 53 (P)

Raven Emma E 4241 (P)

Suhn's Trail Boss 30B3 (P)

MS TJM Trail Boss 302E2 (P)

Oaks Ms Patton 302X3 (P)

A Blend Of Maternal And Power

- Sired by Powerball, your lottery winner for power, body, thickness and mass while making beautiful daughters with impeccable udders
- Scanned his 8.25% IMF, moves the needle for marbling and end product on US data
- A moderate framed, eye appealing bull who's wide based, and super sound with a great disposition. He's thick ended with the added power of a beef bull look
- DNA tested homozygous black, homozygous polled

	BREED %	CED	BW	WW	YW	MILK	CEM	TM	SC	REA	IMF	FAT	HP	STAY	CW	TI	FERT	BB	NC
EPD		+5.1	-0.1	+37	+61	+7	+3.50	+26	+1.20	+36	+37	+0.11	+4.20	+1.60	+3.02	+6.67	+2.94	-1.14	+0.08
ACC	Homo. Blk.	.32	.44	.40	.30	.22	.22		.32	.35	.43	.37	.16	.09	.21				
%Rank	Homo. Pld.	40	35	15	20	65	50	20	10	30	15	70	35	30	70	15	25	30	30

EPDs July 2023 **TOP 35%**

ANGUS TRAIT LEADERS

CE

Patriarch	p21	+11.1	1%
Full House		+10.3	2%
Smokin Jo	p27	+10.1	3%
Sovereign	p10	+9.3	5%
Jet Stream	p22	+9.2	5%

GL

Revolution	p26	-11.1	1%
Rector	p18	-10.2	2%
Tailor Made	p17	-10.0	2%
Resilient	p15	-9.7	3%
Stellar	p16	-9.6	3%

BW

Smokin Jo	p27	-0.4	1%
Full House		+0.5	3%
Patriarch	p21	+0.5	3%
True North	p23	+0.8	4%
Jet Stream	p22	+0.9	5%

200 D

Man In Black	p24	+79	1%
Gunner		+76	1%
Jet Black	p22	+75	1%
Dynamic	p28	+73	1%
No Substitute	p31	+73	1%

400 D

Man In Black	p24	+138	1%
Dynamic	p28	+134	1%
No Substitute	p31	+129	1%
Gunner		+128	1%
Milestone	p30	+127	1%

600 D

Man In Black	p24	+171	1%
Dynamic	p28	+166	1%
Refresh		+163	1%
Milestone	p30	+161	2%
No Substitute	p31	+156	2%

MCW

Elevator	p26	+190	1%
Dynamic	p28	+156	2%
Legend		+154	2%
Kingdom	p30	+150	3%
Man In Black	p24	+149	3%

DOC

Elevator	p26	+54	1%
New Ground	p13	+40	2%
Rector	p18	+36	5%
Loch Up		+35	6%
Rembrandt	p7	+34	7%

SS

New Ground	p13	+6.8	1%
Broadview	p27	+4.6	2%
Quarter Pounder	p18	+4.5	2%
Investment		+3.6	8%
Quixote	p19	+3.5	9%

IMF

Sovereign	p10	+5.7	2%
Fireball	p28	+4.8	4%
Real Deal	p12	+4.2	8%
Smokin Jo	p27	+4.1	9%
Rector	p18	+3.9	11%

EMA

No Substitute	p31	+14.7	1%
Comstock	p11	+14.5	1%
Fireball	p28	+13.9	2%
Dignity	p14	+13.8	2%
Jet Stream	p22	+13.6	2%

\$A

No Substitute	p31	\$300	1%
Gunner		\$283	1%
Comstock	p11	\$276	1%
Fireball	p28	\$275	1%
Dignity	p14	\$274	1%

NUERA GENETICS

GENETICS WITH THE END IN MIND

Efficiency. Sustainability. Profitability. NuEra Genetics™ believes in maximising calf crop value delivering differentiated and superior terminal genetics for beef supply chain profitability.

- » Elite terminal composite genetic solutions to maximise supply chain efficiency through superior backgrounder and feedlot performance
- » Elite grading results across multiple US trials
- » Available in heterospermic packs to maximise terminal profitability and conception rates
- » Pairs perfectly with Sexcel® sexed female maternal product for heifer replacement



For more information about NuEra terminal beef sires, get in touch with your local ABS representative today.

1800 ABS BULL | WWW.ABSGLOBAL.COM/AU



SPARTAN

(AMF,CAF,DDF,NHF,DWF,MAF,OHF,OSF)

Bieber Spartan E639 | 29AR0277 | Owned by: Bieber Red Angus, SD; ABS Global, Inc., WI



Calving Ease, Type and Cow Power

- Exceptionally stylish beef bull, wide based, attractive, thick, deep strong top
- Walks proudly on good feet
- VGW Oly 903 daughters are tremendous
- Moderate framed, super big bodied and thick ended

Angus Reg. No.	USA3762927
Red Angus Reg. No.	USAM3762927
Born	30/04/2017
Birth Weight	38kg
Weight 205 days	375kg
Weight 365 days	575kg
SS 27 months	45cm
FS	6-

Bieber Rouse Samurai X22

Bieber Spartacus A193

Bieber Tilly 233U

VGW Oly 903

Bieber Renee 477A

OLC Renee S188

	CE-DIR	CE-DT	GL	BW	200D	400D	600D	MCW	Milk	DTC	SS	DOC	CWT	EMA	Rib	Rump	RBV	IMF	NFI-F	Claw	Foot	Leg	\$A	\$A-L
EBV	+2.6	-	-2.4	+3.9	+50	+87	+106	+86	+18	-	+1.6	-	+60	+5.0	+0.3	-0.7	+1.0	+0.6	+0.16	-	-	-	\$191	\$322
ACC	38%	-	64%	73%	64%	59%	59%	55%	52%	-	40%	-	52%	62%	44%	41%	43%	46%	27%	-	-	-		
%Rank	52	-	84	46	52	59	73	73	43	-	68	-	68	65	40	57	18	88	47	-	-	-	60	67

EBVs as at Mid-July 2023 **TOP 20%**

FINISHED PRODUCT

(AMF,CAF,DDF,NHF,DWF,MAF,MHF,OHF,OSF,RGA)

Collier Finished Product | 29AR0276 | Owned by: Collier Diamond C Ranch, TX; ABS Global, Inc., WI



Building A Maternal Product

- Total outcross pedigree that combines three legendary Angus sires who were famous for their ability to make fantastic females with impeccable udders, great femininity and exceptional dispositions
- His famous great grandam Amy B121 comes from the same cow family that you will find in the impressive female maker Fusion's pedigree
- Proven calving ease with exceptional maternal traits with a CE of +11.8
- He is attractively patterned, dark cherry red, big soft bodied and as sound as a cat
- If you're in the business to make stylish attractive cows, look no further, the maternal ability of this sire runs multiple generations deep

Angus Reg. No.	USA3861137
Red Angus Reg. No.	USAM3861137
Born	31/07/2017
Birth Weight	29kg
Weight 205 days	303kg
Weight 365 days	679kg
Mature Weight	722kg

Connealy Final Product

Collier Final Product B389

Andras Amy B121

Hoover Dam

Collier Amy B385

Andras Amy B121

	CE-DIR	CE-DT	GL	BW	200D	400D	600D	MCW	Milk	DTC	SS	DOC	CWT	EMA	Rib	Rump	RBV	IMF	NFI-F	Claw	Foot	Leg	\$A	\$A-L
EBV	+11.8	+8.7	-5.0	-0.6	+44	+80	+91	+67	+14	-5.9	+3.0	+28	+50	+6.9	+1.3	+1.0	+0.6	+1.7	+0.21	-	-	+1.08	\$217	\$361
ACC	52%	43%	66%	66%	69%	66%	66%	64%	57%	36%	62%	39%	57%	57%	58%	58%	52%	61%	48%	-	-	44%		
%Rank	1	4	46	1	75	79	92	92	74	19	18	18	90	41	21	26	40	61	54	-	-	65	31	37

EBVs as at Mid-July 2023 **TOP 20%**

PROFITMAKER

(AMF,CAF,DDF,NHF,DWF,MAF,MHF,OHF,OSF)

WFL Profitmaker E7030 | 29AR0274 | Owned by: Wedel Red Angus, KS; ABS Global, Inc., WI



Angus Reg. No.	USA3775477
Red Angus Reg. No.	USAM3775477
Born	19/01/2017
Birth Weight	33kg
Weight 205 days	312kg
Weight 365 days	574kg
Weight 24 months	680kg
FS	5+

LJC Merlin T179
WFL Merlin 018A
 WFL Commitment 042Y
 LSF Prospect 2035Z
WFL Prospect
 WFL Hobo 140Z

Making You Profitable

- Outcross pedigree with intriguing EPD profile
- Top 10% for 5 EPDs
- Good style, strong spine, excellent tail set
- Sheath 5



Profitmaker Daughter

	CED	BW	WW	YW	ADG	DMI	Milk	ME	HPG	CEM	Stay	Marb	YG	CW	REA	FAT	ProS	HB	GM
EPD	+19	-7.2	+65	+98	+0.21	+1.04	+41	-8	+12	+10	+15	+0.50	-0.03	+15	+28	+0.01	\$113	\$73	\$40
ACC	0.81	0.92	0.89	0.90	0.90	0.49	0.67	0.47	0.72	0.68	0.41	0.68	0.55	0.71	0.70	0.62			
%Rank	3	1	40	53	67	17	1	9	48	8	57	33	14	74	24	40	22	19	43

EPDs as at August 2023 **TOP 35%**

NO WORRIES

(AMF,CAF,DDF,NHF,DWF,MAF,MHF,OHF,OSF,RGA)

LSF BRA No Worries 4657B | 29AR0262 | Owned by: Ludvigson Stock Farm, IA; ABS Global, Inc., WI



Angus Reg. No.	USA1689588
Red Angus Reg. No.	USAM1689588
Born	31/01/2014
Birth Weight	35kg
Weight 205 days	370kg
Weight 365 days	609kg
SS 33 months	36.5cm

Beckton Nebula P P707
Brown JYJ Redemption Y1334
 JYJ Ms Jolene W16
 LSF JBOB Expectation 6034S
LSF Crystal R5154 X0105
 LSF Crystal LA394 R5154

No Worries

- Solid calving ease and reduced birth weight with added growth and tremendous type
- Super sound structured and long bodied – one of the best phenotype calving ease bulls in the breed
- Daughters will display added femininity, balance and rib shape. Sons have added top, thickness and hip

	CE-DIR	CE-DT	GL	BW	200D	400D	600D	MCW	Milk	DTC	SS	DOC	CWT	EMA	Rib	Rump	RBV	IMF	NFI-F	Claw	Foot	Leg	\$A	\$A-L
EBV	+3.0	+2.8	-5.2	+2.9	+5	+96	+126	+110	+18	-	+2.1	+20	+73	+4.2	-2.1	-2.8	+0.9	+0.9	+0.07	-	-	+0.98	\$175	\$317
ACC	40%	27%	56%	56%	55%	53%	53%	50%	45%	-	49%	32%	45%	45%	44%	43%	39%	43%	28%	-	-	41%		
%Rank	49	52	42	25	28	33	31	33	45	-	48	47	30	74	89	88	23	82	35	-	-	31	76	70

EBVs as at Mid-July 2023 **TOP 20%**



TRADEMARK

(AMF,CAF,DDF,NHF,DWF,MAF,MHF,OHF,OSF,RGA)

Paringa Trademark T14 | 29AR0293 | Owned by: Paringa Livestock Pty Ltd



Dam: Paringa Red Fevola N23



Sire: Dunoon Double Up Q201

Angus Reg. No.	HKF22T14
Red Angus AUS Reg. No.	ANGHKF22T14
Red Angus USA Reg. No.	RAAA # ANGHKF22T14
Born	14/01/2022
Birth Weight	36kg
Weaning Weight	377kg
Yearling Weight	592kg
SS	42cm
FS 14 months	6
Claw Shape	6

Rennylea L519
Dunoon Double Up Q201
 Dunoon Dandloo L116

Milwillah Fevola F37
Paringa Red Fevola N23 (Red)
 Paringa Red New Man F114 (Red)

The Game Changer

- Paringa Red Trademark T14 is a truly a remarkable Red Angus young sire. He is phenotypically tremendous, visually outstanding from all angles
- When we study Trademark's data, his combination of calving ease, elite carcass quality, excellent claw shape, strong docility, with high fertility and dam's perfect udder score, make him a must use Red Angus sire
- Trademark's genetic profile is matched to a wide range of markets including high end MSA, and will meet future demand for increased efficiencies as the industry strives for carbon neutrality
- No other Red Angus bull globally carries such credentials within this stunning pedigree combination. He carries the service of Dunoon Double UP Q201, a proven L519 X Novak stud sire, while bred from dam Paringa Fevola N23 – currently regarded as Paringa's best Red Angus female, who is half-sister to Millwillah Marble Bar J53
- Trademark combines two of the greatest cows in the black Angus population; with grand dam TeMania Mittagong V254 on the dam side, and TeMania Dandloo H5 on the sire side

	CE-DIR	CE-DT	GL	BW	200D	400D	600D	MCW	Milk	DTC	SS	DOC	CWT	EMA	Rib	Rump	RBV	IMF	NFI-F	Claw	Foot	Leg	\$A	\$A-L
EBV	+4.8	+7.1	-6.1	+3.7	+49	+84	+110	+87	+13	-7.0	+3.9	+22	+64	+4.1	+1.5	+2.2	-0.8	+4.2	+0.83	+0.74	+0.86	+1.08	\$226	\$380
ACC	55%	45%	68%	70%	72%	69%	69%	67%	60%	37%	66%	39%	60%	59%	60%	61%	53%	64%	50%	60%	60%	59%		
%Rank	33	11	28	41	54	67	66	71	82	5	5	37	55	76	18	12	97	8	98	27	24	65	22	23

EBVs as at Mid-July 2023 **TOP 20%**

ALLEGIANCE

(AMF,CAF,DDF,NHF,DWF,MAF,OSF)

HXC Allegiance 5502C | 29AR0268 | Owned by: Hueftle Cattle Co, NE; C Bar Ranch, KS; ABS Global, Inc., WI



Devotion to Profitability

- Exceptional customer satisfaction sire
- Designed to infuse breed leading growth, marbling and phenotype
- Near flawless type and kind
- Adds length to progeny
- Super sound, very thick with added muscle, deep and soft sided

Angus Reg. No.	USA3494126
Red Angus Reg. No.	USAM3494126
Born	04/02/2015
Birth Weight	37kg
Weight 205 days	320kg
Weight 365 days	620kg

LSF Nextpectation 0083X
Leachman Pledge A282Z
 LCOC Zara TG004
 Beckton Nebula P P707
HXC 100Y
 HXC Zima 338N

	CE-DIR	CE-DT	GL	BW	200D	400D	600D	MCW	Milk	DTC	SS	DOC	CWT	EMA	Rib	Rump	RBV	IMF	NFI-F	Claw	Foot	Leg	\$A	\$A-L
EBV	+8.1	+4.5	-5.6	+2.4	+55	+95	+123	+103	+18	-	+2.7	-	+72	+4.6	-0.4	-1.1	+0.4	+1.6	+0.18	-	-	-	\$197	\$352
ACC	46%	27%	77%	81%	68%	66%	72%	64%	59%	-	60%	-	59%	63%	51%	49%	49%	50%	27%	-	-	-		
%Rank	9	34	36	17	29	36	37	44	41	-	26	-	33	70	57	64	53	64	50	-	-	-	54	44

EBVs as at Mid-July 2023 **TOP 20%**

SAINFOIN

Carreg Sainfoin | 29TL0007



Power, Style and Length

- Huge Australian uptake in 2021 and 2022 following his introduction
- A fantastic bull who is extremely square and great on his feet and legs
- His dam Flora scored VG 88, and is a prolific female in the Carreg herd
- Dam, Flora, has 9 registered progeny and is now 15 years old
- Sainfoin calves are receiving awesome feedback for their length, strong chine and top lines and very sound feet
- Sainfoin exhibits great docility and this is well exemplified through the first young progeny emerging in Australia

UK Reg. No.	UK741281/100284
Born	12/03/2018



Bollin Eugene 13805/E0343
Fishwick Macavity 25284/M00087
 Fishwick Donna 11663/D0087
 Dunley Alligator 10195/B0705
Carreg Flora VG88 13786/F0149
 Linton Trefoil 6717

JEFFERSON

JMAR Jefferson 8M11 | 29CH0233 | Owned by: J-Mar Genetics, VA; ABS Global, Inc., WI



AU Reg. No.	O AUS1993E
USA Reg. No.	M951993
Born	17/04/2021
Birth Weight	92 lbs
YFS	7.10
Weaning Weight/Ratio	776 lbs/107
Yearling Weight/Ratio	1507 lbs/114
SS 12 Month	39cm
Poll	Homo Polled

VPI Free Lunch 708T
FTJ Monticello 1806
 FTJ LTRB905 LTBV Shandy1527
 WCF Mr Silver Gun 467
DCR Ms Silver Led F136
 DCR Ms Ledger C43

Changing The Landscape Of Charolais Beef

- The must use young sire of the Charolais breed today
- The #1 TSI index in the breed, and again unmatched for his birth to growth spread with exceptional marbling EPD and index value
- Stacks generations and predictability for performance and end product. Sire and dam are both top 1% terminal index
- A good looking sire with ground pounding performance, weaned over 770 lbs, yearling over 1,500 lbs, big testicles and a +.75 in REA
- DNA tested homozygous polled
- November 2022 US inspection showed Jefferson to be a long spined, square hipped, extremely well balanced young sire with an excellent neck and head carriage

	CE	BW	WW	YW	Milk	CEM	TM	SC	UDDER	TEAT	CW	REA	FAT	MARB	TSI
EPD	+11.7	-0.2	+80	+161	+17	+14.3	+57	+1.3	+1.47	+1.33	+47	+0.75	+0.042	+0.35	+306.39
ACC	0.25	0.38	0.29	0.29	0.15	0.14	0.20	0.26	0.17	0.17	0.17	0.18	0.16	0.14	
%Rank	45	70	3	1	90	5	40	20	1	3	1	40	100	2	1

EPD's as at July 2023 **TOP 35%**

LEAD TIME

OW Lead Time 6294 PLD (P) | 29CH0221



AU Reg. No.	O AUM6294E
USA Reg. No.	M875419
Born	10/04/2016
Birth Weight	35kg
YFS	6-
Weaning Weight/Ratio	333kg/111
Yearling Weight/Ratio	590kg/112
SS	41cm
Poll	Hetro Poll
MD Status	Test Clear

Cooley Royce 1107T39 (P)
FF About Time Y07 (P)
 DC Grona 146T (P)
 MC-OW Sandcreek 375
OW Miss Sandcreek 3031 PLD (P)
 OW Miss Maximizer W13 PLD (P)

Getting You Ahead

- Complete outcross pedigree with unsurpassed EBV package - he's a rare find!
- No other bull in the breed can match his combination of birth to yearling spread in combination with end product
- Proven foot improver with body, softness and fleshing docility with red muscle shape
- 141 registered out of 25 herds, 166 analysed

	CE-DIR	CE-DT	GL	BW	200D	400D	600D	MCW	Milk	SS	CWT	EMA	RIB	Rump	RBY%	IMF%	DTI	NTI
EBV	+13.4	+4.8	-6.4	-3.9	+7	+22	+16	+2	+20	+3.2	+20	+3.5	+2	+2.2	-0.1	0	\$33	\$77
ACC	76%	60%	95%	95%	91%	91%	90%	84%	80%	91%	76%	65%	79%	78%	69%	66%		
%Rank	3	16	3	2	88	63	88	94	1	2	52	2	3	7	60	63	18	5

EBVs as at June 2023 **TOP 20%**

POWERMAX

Keys Powermax 57G | 271CH4572



AU Reg. No.	OAUQ804E
USA Reg. No.	M930804
Born	18/02/2019
Birth Weight	90 lbs
AWW/Ratio	835 lbs / 109
AYW Ratio	1400 lbs / 106
REA Ratio	16.44 / 112
IMF Ratio	2.31 / 117
SS	41.37 cm
Poll	Homo Polled
MD Status	Tested Clear

DC-OW Maximizer 385PLD
OW Maximizer 3041 PLD
 OW Miss Sandcreek Y46

Keys Bentley 134B
Miss Key Jeri 26E
 Miss Key Jeri 95A

In The Bonus Round

- Appreciate his awesome phenotype, strength of spine and impressive muscle pattern
- Combines structural correctness with impressive data and a quiet disposition
- Added bonus: This Key Ranch high seller is a genetic outcross to most Charolais bloodlines
- Homozygous polled
- Admire the EPD data that Powermax exhibits, including big time calving ease, low birth with great weaning weight
- Excellent milk and scrotal combination in addition to impressive carcass and rib eye data

	CE	BW	WW	YW	Milk	MCE	MTL	SC	Udder	Teat	CW	REA	FAT	MARB	TSI
EPD	+13.5	-0.9	+70	+112	+37	+7.8	+73	+1.3	+0.72	+0.78	+24	+1.09	+0.011	+0.15	252.93
ACC	0.49	0.83	0.74	0.68	0.20	0.18	0.38	0.49	0.19	0.19	0.27	0.26	0.23	0.19	
%Rank	30	50	20	45	3	65	2	25	100	100	30	3	70	35	50

EPD's as at July 2023 **TOP 35%**

VISTA

LT Vista 5319 (P) | 29CH0218



AU Reg. No.	OAUL5319E
USA Reg. No.	M866840
Born	29/03/2015
Birth Weight	39kg
Weight 205 days	410kg
Weight 365 days	681kg
Poll	Homo Polled
MD Status	Tested Clear

LT Ledger 0332 P
LT Sundance 2251 PLD
 LT Ballet 9219 Polled

LT Long Distance 9001 PLD
LT Athena 2040 PLD
 LT Blue Athena 0331 P

A Pleasing View

- Use to improve temperament, calving ease and carcass quality
- Along with impressive individual data, Vista provides scrotal and eye appeal from a dam by maternal giant LT Long Distance
- A popular choice for Australian breeders over several years Vista progeny display awesome length, thumping hindquarters, excellent scrotal circumferences and strength of spine
- 109 registered progeny, across 19 herds, 100 analysed
- Use Vista to add capacity and volume to your Charolais herd and produce easy doing females with added carcass

	CE-DIR	CE-DT	GL	BW	200D	400D	600D	MCW	Milk	SS	CWT	EMA	RIB	Rump	RBV%	IMF%	DTI	NTI
EBV	-3.1	-4.6	-6	-3.2	+8	+25	+24	+1	+14	+1.2	+18	+0.1	+2.1	+2.5	-2.2	+0.7	\$18	\$44
ACC	78%	55%	92%	91%	85%	83%	78%	72%	60%	81%	66%	56%	67%	66%	60%	56%		
%Rank	78	88	6	3	82	48	74	94	5	45	63	95	2	5	99	10	78	42

EBVs as at June 2023 **TOP 20%**



GOVERNOR

LT Governor 1560 PLD | 271CH4621 | Owned by: Lindskov's LT Ranch, SD; Wagner Charolais, CO



Dam: LT Sybille 6476 PLD



Maternal Grand Sire: LT Ledger 0332 P



LT Governor, November 2022

AU Reg. No.	O AUS3060E
USA Reg. No.	M963060
Born	03/02/2021
Poll	Polled
MD Status	Free

LT Authority 7229 PLD
LT Badge 9184 PLD
 LT Madalynn 6108 PLD

LT Ledger 0332 P
LT Sybille 6476 PLD
 LK Miss Sybille 252 P

A New Leader

- A standout since the day he was born and is a performance game changer for any operation. Highlight Charolais from 2022 US tour
- Top 1% of the breed for WW, YW and TSI in the US
- 2022 LT Bull Sale high-selling bull at \$220,000!
- Governor is the highest selling bull in LT's history!
- Homozygous polled and MD free
- Deep bodied and tied in well from front to rear
- Clean headed and smooth shouldered
- Large scrotal and easy fleshing with incredible doing ability that we've come to love from LT sires
- Natural bred 30 cows in the spring and 35 in the fall while still keeping his condition
- Great disposition
- Dam is a beautiful Ledger x Long Distance that has a tidy, dark pigmented udder and model conformation
- First calves are on the ground with no assistance and are vigorous at birth

	CE-DIR	CE-DT	GL	BW	200D	400D	600D	MCW	Milk	SS	CWT	EMA	RIB	Rump	RBY%	IMF%	DTI	NTI
EBV	+13	+2.5	-6	-4	+7	+18	+17	0	+10	+2.1	+15	+0.2	+2.3	+2.9	-2.2	+0.6	\$22	\$61
ACC	43%	32%	53%	54%	51%	50%	47%	44%	36%	47%	41%	35%	39%	38%	36%	34%		
%Rank	3	38	6	2	88	78	88	94	20	11	78	95	2	3	99	15	55	11

EBVs as at June 2023 **TOP 20%**

OSIRIS

Highgate Osiris 5 | 29DS0007 | Owned by: Genus



Reg. No.	ICNPR124
UK Reg. No.	UK383244 301124
Born	19/03/2020
Birth Weight	44kg
Horn/Poll	Polled
Myostatin	F94L Status Ø

George Teign Swig Bacchus
George Teign Swig Bacchus 3
 George Teign Primula 104
 Polkinghorne King George 8
Highgate Pansy 55
 Highgate Pansy 46

Osiris

- Displays tremendous phenotype with great length and muscle throughout
- Ideal to produce good quality replacement females

	CE-DIR	CE-DT	GL	BW	200D	400D	600D	MCW	Milk	SS	CWT	EMA	Rib	RBY%	IMF%	QBI	SRI
EBV	+2.1	-0.2	+0.4	+2.2	+31	+55	+70	+69	+6	+0.6	+44	-	-	-	-	\$71	\$46
ACC	53%	38%	54%	71%	68%	72%	65%	49%	34%	34%	57%	-	-	-	-		
%Rank	28	65	33	65	6	8	6	10	38	28	2	-	-	-	-	2	3

EBVs as at July 2023 **TOP 35%**

NEW

SUNRISE

BCC Sunrise 243K | 29HP0964 | Owned by: Baumgarten Cattle Company, ND; ABS Global, Inc., WI



USA Reg. No.	44362272
Born	06/02/2022
Birth Weight	35kg
Weaning Weight	324kg

SHF York 19H Y02
SHF Daybreak Y02 D287
 SHF Miss M326 T08
 Gerber Anodyne 001A
SHF Time 001A D81
 SHF Time 42X A140

Sunrise Will Let You Sleep Easy and Sleep All Night

- First and limited semen available early 2024
- The next step in high maternal calving ease genetics
- Standout individual in the 2023 Baumgarten Cattle Company bull sale
- A balanced curve bending calving ease and growth sire, posting 6 traits in the top 5% of the breed and 13 traits in the top 20%
- Good deep soft sided individual with plenty of muscle and sound all the way to the ground - very short marked, dark red and goggle eyed
- Homozygous polled (DNA confirmation pending), 100% pigment both eyes

	CE	BW	WW	YW	DMI	SC	SCF	MILK	M+G	CEM	MCW	US	TS	CW	FAT	REA	MARB	BMI	BII	CHB
EPD	+12.0	-0.7	+61	+99	+0.4	+1.7	+20.7	+32	+62	+9.0	+78	+1.50	+1.60	+71	+0.031	+48	+24	£424	£512	£132
ACC	0.34	0.47	0.44	0.44	0.14	0.40	0.32	0.23		0.33	0.37	0.44	0.44	0.10	0.10	0.10	0.10			
%Rank	4	4	27	22	68	3	13	19	18	1	27	1	1	40	65	36	16	12	11	19

EPD's as at July 2023 **TOP 35%**

TRADEMARK

(IEF,DLF,HYF,MSUDF,MDF)

Innisfail Trademark 1939 | 29HP0953 | Owned by: Innisfail Farm, GA; ABS Global, Inc., WI



Reg. No.	OSA44097651AHR
USA Reg. No.	44097651
Born	04/09/2019
Weight 24 months	785kg
SS	35.7cm
FS	6
Eye Pigment	100/100
Poll	Homo Polled

EFBEEF TFL U208 Tested X651 (P)
EFBEEF BR Validated B413 (PP)
 EFBEEF 4R Thyra Y865 (P)
 EF F745 Frank P230 (P)
Innisfail P230 T723 (P)
 Innisfail 235 R501 (P)

Trademarked For Quality

- In a different league for adding marbling, performance, maternal value and phenotype
- His marbling EPD is two times higher than the top 1% of the breed and 10x higher than breed average
- His remarkable dam has been a dominant and prolific donor in the Innisfail program
- Trademark is short marked, deep dark red to the ground with a dark hard hoof
- DNA tested homozygous polled
- **TESTED FREE OF ALL GENETIC DEFECTS**



Maternal Sister: Innisfail 723
York 5000 ET

	CE-DIR	CE-DT	GL	BW	200D	400D	600D	MCW	Milk	SS	DTC	CWT	EMA	RIB	Rump	RBY%	IMF%	DOC	NFL-F	SSRI	NSRI	SBMI	NBTI
EBV	+7.2	+1.6	+3.4	+3.8	+47	+76	+98	+70	+17	+3.2	-2.4	+64	+7.2	+1.4	+0.5	+1.0	+2.0	-	-	\$197	\$185	\$209	\$158
ACC	42%	33%	65%	81%	83%	82%	80%	77%	77%	78%	39%	75%	68%	71%	65%	55%	69%	-	-				
%Rank	20	60	98	48	2	4	11	42	46	11	68	18	2	25	68	40	3	-	-	5	6	5	2

EBVs as at July 2023 **TOP 20%**

MCLAREN

(IEF,DLF,HYF,MSUDF,MDF)

Tarcombe McLaren Q203 (AI) (PP) | 29HP0955 | Owned by: Tarcombe Herefords P/L



Reg. No.	THSQ203
Born	17/08/2019
Birth Weight	43kg
SS	40cm
FS	6
Poll	Homo Polled (PcPc)
Eye Pigment	90/80

Wirruna Justin J13 (P)
Wirruna McLaren M175 (PP)
 Wirruna Lorna J413 (P)
 Mount Difficult Cadbury (P)
Tarcombe Last Day M174 (P)
 Wirruna Last Day B16 (H#)

Built For Speed

- Phase 1 Herefords Australia Super Sire!
- This homozygous polled sire comes from the elite female Tarcombe Last Day M174 who has already produced the maternal brother P117 selling for \$15,000 at the Wodonga National Show and Sale in 2020
- McLaren Q203 offers a well-rounded phenotypic package that exudes sire appeal. His natural thickness, muscling, body depth, length and skin type makes him a must-have sire option for any breeding program
- Low birth, short gestation, easy calving and carcass data to burn. Q203 offers 11 traits in the top 10% of the breed
- No 1 in his group of 28 bulls for EMA @ 105cm
- No 2 in his group of 28 bulls for IMF @ 4.0%
- Top 1% IMF, Top 4% EMA

	CE-DIR	CE-DT	GL	BW	200D	400D	600D	MCW	Milk	SS	DTC	CWT	EMA	RIB	Rump	RBY%	IMF%	DOC	NFL-F	SSRI	NSRI	SBMI	NBTI
EBV	+11	+10.5	-6.1	+0.7	+42	+67	+83	+49	+12	+2.8	-5.9	+75	+6.9	+2	+2.9	+0.4	+2.8	+42	-0.06	\$231	\$232	\$241	\$168
ACC	72%	50%	95%	95%	91%	81%	80%	71%	61%	79%	46%	68%	55%	58%	62%	56%	60%	85%	31%				
%Rank	3	1	2	8	11	18	42	84	85	20	3	3	4	6	5	70	1	5	28	1	1	1	1

EBVs as at July 2023 **TOP 20%**



ROBERT REDFORD

(IEF,DLF,HYF,MSUDF,MDF)

Injemira Robert Redford Q287 (PP) | 29HP0951 | Owned by: Vielun Past. Co., Ardno Herefords, Jarrah Genetics, ABS Australia



Q287 Dam: Injemira First Day N063



Q287, sale day



Reg. No.	IHSQ287
Born	03/09/2019
Birth Weight	32kg
Weight 200 days	310kg
Weight 13 months	575kg
Eye Pigment	100/100
Poll	Homo Polled

Redgate Redford D935 (P)
Injemira Redford J006 (PP)
 Injemira Cavalier F201 (P)

Days Executive K168 (PP)
Injemira First Day N063 (P)
 Injemira First Day H004 (P)

The Record Setter

- Robert Redford entered a league of his own in 2023! He is unmatched for combination of phenotype, pedigree, and data. He is the game changer of the breed and the MUST use sire of 2023
- Sold at the Injemira 2021 auction to the syndicate formed by ABS Australia for a new Australian Hereford record price of \$160,000
- The first sons entered the sale ring in 2023 averaging an astonishing \$21,769
- Phenotypically exquisite, packed with red meat and offering incredible thickness, length, bone and muscle capacity, he is perfectly suited to any seedstock or commercial production system
- Progeny reports continue to roll in with consistent messaging – “Redford calves are born well before their due date and are born easily with an exceptional growth pattern, thickness and wrapped up in a terrific skin type”
- His hot new data is reflective of the progeny reports with Redford sitting as a trait leader for 4 traits (GL, BW, CWT, IMF) and the top 20% for 7 traits and top 1% for all Indexes

	CE-DIR	CE-DT	GL	BW	200D	400D	600D	MCW	Milk	SS	DTC	CWT	EMA	RIB	Rump	RBY%	IMF%	DOC	NFI-F	SSRI	NSRI	SBMI	NBTI
EBV	+14.1	+6.7	-7.7	-2.7	+43	+74	+92	+51	+21	+2.8	-1.1	+98	+10.4	+1.9	+2.9	+1.6	+2.7	+44	-	\$224	\$232	\$261	\$203
ACC	71%	48%	96%	96%	93%	91%	85%	74%	58%	92%	43%	74%	67%	70%	76%	67%	72%	47%	-				
%Rank	1	8	1	1	8	6	23	78	18	20	80	1	1	8	5	18	1	2	-	1	1	1	1

EBVs as at July 2023 **TOP 20%**

FIFTY

Wulfs Fifty T804F | 306LM320 | Owned by: D-M Beach Limousin Ranch and Wulf Cattle Co



Reg. No.	IMUP1804
USA Reg. No.	NPM2142492
Born	15/01/2018
Birth Weight	37kg
Weaning Weight/Ratio	369kg/114
Yearling Weight	602kg
SS 13 months	38cm
YFS	6
Poll	Homo Polled

Wulf's Ziplock N922Z
LFLC Bank Account 701B
 LFLC 701X Xtra Good
 Wulfs Amazing Bull T341A
TECS Dantean 1629D
 TECS Azalea 1306

	CE-DIR	CE-DT	GL	BW	200D	400D	600D	MCW	Milk	SS	CWT	EMA	RIB	Rump	RBV%	IMF%	DOC	DMI	EMI	NEI	YPI
EBV	+2.1	+1.1	-3.1	+0.6	+24	+44	+60	+62	+11	+1.7	+41	+3	+0.2	+0.4	+0.6	+0.4	+53	\$55	\$82	\$99	\$53
ACC	48%	35%	77%	76%	63%	61%	62%	42%	33%	41%	38%	29%	34%	33%	30%	30%	50%				
%Rank	28	35	32	13	32	21	23	22	15	15	14	13	20	15	65	6	33	19	18	16	19

EBVs as at July 2023 **TOP 20%**

It's a 50-50 Choice

- Wulfs Fifty T804F is an exceptional showcase of progressive genetics and evidence of the adaptation of Limousin cattle to fit today's beef industry
- Fifty's eye catching, athletic phenotype made him the lead bull in the 2019 Wulf Cattle NWSS Grand Champion Limousin Pen
- A great choice to improve foot quality and scrotal size, this extra stout, calving ease prospect is ultra complete
- He exhibits the great phenotype often transmitted by his sire, LFLC Bank Account 701B, in a performance package which tallied a 811# 205 day weight, coupled with growth EPDs in the top 2% of the breed
- His 7 year old dam is a daughter of the globally renowned maternal sire, Wulfs Amazing Bull T341A
- Wulfs Fifty T804F has seen tremendous uptake by Australian breeders over the past 12 months

VISION

(IEF,DLF,HYF,MSUDF)

Mandayen Vision Y329 (HP) (B) (PN) (AA) | 29LM0090 | Owned by: Mandayen Limousins



Reg. No.	MDNPY329
Born	06/10/2003
Birth Weight	38kg
Weight 200 days	330kg
Weight Mature	1075kg
SS 16 months	37cm
Grade	Pure
Colour	Hetro Black
Poll	Homo Polled

White Lakes Sire Power (P A AA)
White Lakes Vision 2000 (S) (PS A) (AA)
 White Lakes Knutsie (P A U)
 Tomahawks Black Frontier 117C (PP BB U)
Castlereagh Connie R37 (PP) (BB) (U)
 Lukas Connie (P BB U)

	CE-DIR	CE-DT	GL	BW	200D	400D	600D	MCW	Milk	SS	CWT	EMA	RIB	Rump	RBV%	IMF%	DOC	DMI	EMI	NEI	YPI
EBV	+7.4	+10.9	-4.7	+1	+26	+49	+70	+69	+18	+0.8	+52	+2.3	0	+0.1	+1.1	+0.1	+58	\$61	\$96	\$119	\$62
ACC	92%	90%	98%	98%	97%	97%	98%	95%	97%	96%	94%	89%	92%	92%	88%	88%	99%				
%Rank	1	1	11	25	20	9	7	11	1	70	1	35	40	25	25	25	20	10	3	2	3

EBVs as at July 2023 **TOP 20%**

A Clear Vision

- 10 traits in top 10% of breed
- Trait leader in CE, Milk, Carcass
- No bull does it better in EBVs! 825 progeny in 91 herds
- Produces thick, eye appealing progeny
- Vision has it all, the EBVs, the phenotype, outcross and Australian proven

KOKODA

Futurity Kokoda (P) (AI) | 29SP0002 | Owned by: Trojan and Southern Cross Shorthorns



Reg. No.	JJK128
Born	02/09/2014
Birth Weight	37kg
Weight 24 months	847kg
SS	38cm
Colour	Roan
Poll	Poll - Hetro

Springwood Station Chicago Hop (P)
Turanville Chicago Z82 (P)
 Turanville Riddle W18 (P)
 The Grove Phenomenon B295 (P)
Futurity Phenomenons Ruby H59 (P)
 Futurity Legends Ruby E5 (P)

A Fighting Spirit

- Kokoda is a solid proven bull, featuring excellent CE and high carcass merit.
- Top 4% API, 15% CE, 10% DOC and MCE
- Progeny are excelling in the field. They are thick from front to rear with depth of body
- Without question one of ABS Beef's most popular Shorthorn sires in history, who continues to receive incredible feedback from clients around Australia

	CE	BW	WW	YW	Milk	MCE	MWWT	STAY	DOC	CW	REA	FAT	MARB	YG	API
EPD	+11.9	+1.8	+43.7	+75.4	+24.9	+9.3	+46.8	+18.5	+15.6	-4.2	+0.21	-0.085	+0.09	-0.33	\$133.80
ACC	59%	72%	62%	64%	37%	37%	45%	23%	54%	47%	45%	35%	43%	36%	
%Rank	15	25	90	75	60	10	85	2	10	85	90	65	20	55	4

EPDs July 2023 **TOP 20%**

NAPOLEON

Napoleon Of Upsall (P) | 29SS0038 | Owned by: The Hon. G. Turton



Reg. No.	MUK601374
UK Reg. No.	663802075
Born	27/02/2019
Colour	Roan
Poll	N/Pc & N/Pf

Fearn Elmer (P)
Lawyer Of Upsall (P) EX 93
 Tessa X930 Of Upsall (P) (TW) VG 86
 Firefox Of Upsall (P) EX 93
Augusta X1158 Of Upsall (P) VG 87
 Augusta X904 Of Upsall (P) VG 86

From The Other Side Of The World

- An exciting roan Shorthorn bull available from Genus UK. Upsall Castle Farms sold Napoleon of Upsall who is a fantastic example of the breed for producing maternal daughters with added milk
- He himself is an outstanding roan Beef Shorthorn bull from the Upsall herd that not only looks the part, but also has the pedigree credentials to match
- He is a son of Lawyer of Upsall and from a Firefox of Upsall sired dam
- Napoleon is also heterozygous polled

	CE-Dir	CE-Dtr	GL	BW	200D	400D	600D	MCW	MILK	SS	CWT	EMA	RIB	RBY	IMF	TI	SRI	M(GBP)
EBV	-7.9	+3.4	+0.8	+3.5	+29	+37	+46	+49	+5	+0.9	+30	+1.4	-0.1	+0.5	0.0	+26	+28	+27
ACC	76%	56%	81%	90%	83%	74%	74%	59%	45%	44%	58%	40%	52%	50%	46%			
%Rank	95	6	92	94	8	28	28	32	62	7	43	68	99	60	3000	56	52	11

EBVs July 2023 **TOP 20%**

HONEY BADGER

Futurity Honey Badger H135 (P) (AI) | 29SP0001 | Owned by: Futurity



Reg. No.	JJH135
Born	26/08/2012
Birth Weight	922kg
Fat	P8 14mm Rump 9mm
EMA	130 sq cm
IMF	6.0
SS	39cm
Colour	Red
Poll	Homo Polled
E226	Negative

Narralda Bushranger B114 (P)

The Grove Taboo E228 (P)

The Grove Legends Dale A753 (H)

Turanville Chicago Z82 (P)

Futurity Chicargo's Ruby C67 (P)

Futurity Ruby Z74 (P)

	CE	BW	WW	YW	Milk	MCE	MWWT	STAY	DOC	CW	REA	FAT	MARB	YG	API
EPD	+5.8	+4.3	+61.5	+94.1	+21.6	+6.6	+52.4	+13.8	+2.1	+2.6	+0.28	-0.110	+0.04	-0.39	\$114.89
ACC	61%	77%	73%	75%	57%	48%	62%	38%	67%	60%	53%	44%	59%	43%	
%Rank	80	80	20	20	85	35	55	30	100	55	75	100	30	15	35

EPDs July 2023 **TOP 20%**

Touchdown

- Solid red and polled
- Top 35% ranking for API and has a great wealth of CE, birth to performance growth and he moderates cow mature weight
- On inspection Honey Badger is a complete beef industry type bull and would suit any breed and most systems
- Has a strong head with an impact sire outlook

MORTAL

Sprys Mortal M40 (S) (AI) | 29SP0004 | Owned by: Outback Shorthorns



Reg. No.	GLSM40
Born	22/06/2016
Birth Weight	34kg
Weaning Weight	275kg
Weight 16 months	598kg
Weight 22 months	871kg
SS	38cm
Colour	Red
Poll Gene Test	Poll - Hetro

Weebollabolla Theodore T85 (P)

Royalla Nostalgia (P)

Royalla Countess 8055 (P)

Sprys Patent's Ace G38 (P)

Sprys Aces Primrose K45 (P)

The Grove Primrose A742 (P)

	CE	BW	WW	YW	Milk	MCE	MWWT	STAY	DOC	CW	REA	FAT	MARB	YG	API
EPD	+14.6	+1.8	+48.6	+77.7	+18.9	+10.9	+43.2	+6.9	+3.0	+0.8	+0.57	-0.081	-0.26	-0.42	\$96.18
ACC	58%	69%	64%	63%	35%	34%	45%	31%	44%	48%	44%	34%	47%	36%	
%Rank	3	25	75	65	95	2	95	100	100	65	10	55	100	10	90

EPDs July 2023 **TOP 20%**

Shorthorn Powerhouse

- A thumping red Shorthorn sire out of the renowned Sprys Shorthorn program, Mortal offers an immaculate blend of structure and performance data
- Australian progeny showing plenty off mass, thickness, softness and eye appeal
- Appreciate Mortal's combination of impressive raw data in conjunction with his IGS EPDs



Mortal son



GOLD

(AMF,CAF,DDF,M1F,NHF,OSF,MAF,DLF)

TJ Gold 274G (PP) | 29SM0495 | Owned by: Triangle J Ranch, NE; River Creek Farms, KS; All Beef, NE; ABS Global, Inc., WI



Dam: TJ 12C



Daughter: TJ 44K



Son: Strike 506J

Reg. No.	IMU1Q274
USA Reg. No.	3582577
Born	28/01/2019
Birth Weight	36kg
Weaning Weight	383kg
Yearling Weight	581kg
YFS	5.7
Colour	Homo Black
Polled	Homo Polled

Hook's Black Hawk 50B (P) (B)
Hook's Eagle 6E (P) (B)
 Hook's Crystal 1C (P) (B)

CCR Santa Fe 9349Z (P) (B)
TJ 12C (P) (B)
 TJ Ms 38W (P) (B)

Spread Your Genetic Wings

- Powerful Triangle J sale topper with incredible rib dimension
- Big birth to yearling spread with outstanding docility and marbling combined with elite profit indexes
- DNA tested homozygous black, homozygous polled
- First calves in Australia are calving beautifully, unassisted with plenty of vigour
- US inspection- Gold impressed us greatly with his extremely placid nature
- Gold is powerful, stout, deep and exceptionally well made from any angle. He particularly impresses with huge loin and top line strength and width, with so much fill through the twist and around the hams
- Use Gold to moderate taller, plainer females down a fraction and to add a serious amount of punch
- It is truly rare to find a bull of such physical dimension yet expressing such impressive calving and birthweight data

	CED	BW	WW	YW	Milk	MCE	MWWT	STAY	DOC	CW	REA	FAT	MARB	YG	AAPI	ATI	API	TI
EPD	+16.9	-2.1	+79.3	+123.2	+20.8	+7.1	+60.5	+13.1	+16.4	+28.4	+0.95	-0.066	+0.45	-0.39	\$67.32	\$57.25	\$158.80	\$92.14
ACC	0.55	0.63	0.45	0.46	0.15	0.27	0.25	0.35	0.39	0.39	0.39	0.34	0.37	0.32				
%Rank	3	3	40	35	70	25	60	75	10	55	30	20	4	65	40	50	3	2

EPDs as at July 2023 **TOP 35%**



RADAR

(AMF,CAF,DDF,M1F,NHF,OSF,MAF,OHF,DLF)

Lucrana Radar (PP) (AI) | 29SM0515 | Owned by: S & S Moeck



Son: VC Time Waster T73



Son: VC Top Gun T76



Daughter: VC Perry T059

Reg. No.	JJMPR014
Born	15/05/2020
Birth Weight	37kg
Weight 12 months	666kg
Polled	Homo Polled
Eye Pigment	100/100
Colour	Medium Red

Wai-iti High Riser
Glen Anthony Y-arta AY02 (P)
 Willowbrook Ursulina AU18

Woonallee Dimension (P)
Lucrana N020
 Lucrana K120

On Your Radar

- High selling yearling Simmental bull in 2022 at \$35,000
- Top 25% CE, 35% BW, 15% STAY
- IGS API is top 15%

"We strongly believe this bull is a game changer in the traditional sector. There never has been a bull to have had a bigger impact as Radar on our VC traditional program. The calves come small & thick with a predictable colour pattern & eye pigment plus with the added bonus of docility, softness and is looking to have positive fat over in his calves at this point in time. All calves having a true sire's head, broad muzzle with the added bonus of all being polled."

Sam & Stuart Moeck, VC Simmentals

	CED	BW	WW	YW	Milk	MCE	MWWT	STAY	DOC	CW	REA	FAT	MARB	YG	AAP	ATI	API	TI
EPD	+7.4	+5.1	+65.8	+90.3	+40.0	+6.6	+72.9	+16.9	+12.8	+15.0	+0.44	-0.108	+0.04	-0.39	\$66.33	\$30.29	\$110.31	\$64.57
ACC	0.40	0.43	0.39	0.39	0.14	0.19	0.22	0.28	0.33	0.36	0.34	0.27	0.32	0.28				
%Rank	25	35	70	80	10	10	25	15	10	80	100	15	10	95	10	65	15	40

EPDs as at July 2023 **TOP 35%**

FRANCHISE

(AMF,CAF,DDF,M1F,NHF,OSF,MAF,OHF,DLF,PHAF,THF)

TJ Franchise 451D (PP) | 29SM0494 | Owned by: Triangle J Ranch, NE; ABS Global, Inc., WI



Must Use Sire for 2023

- As physically appealing as you can make a SimAngus bull and he is passing it on
- Unique blend of body, power and looks makes him a game changer within the breed
- Homo polled and homo black
- 1/2 SM 1/2 AN

Reg. No.	IMU1M451
USA Reg. No.	3148384
Born	20/01/2016
Birth Weight	39kg
Weight 205 days	343kg
Weight 365 days	570kg
SS Mature	43cm
FS	5
Colour	Homo Black

Triple C Singletary S3H
CCR Cowboy Cut 5048Z
 CCR Ms 4045 Time 7322T
 S A V Net Worth 4200
TJ Miss Net Worth U11
 K&E Morning Pride Fame99

	CED	BW	WW	YW	Milk	MCE	MWWT	STAY	DOC	CW	REA	FAT	MARB	YG	AAPI	ATI	API	TI
EPD	+11.4	+1.7	+75.3	+108.1	+19.4	+8.1	+57.1	+16.6	+14.3	+31.5	+0.35	+0.012	+0.46	+0.01	\$80.40	\$68.79	\$146.32	\$81.75
ACC	0.41	0.42	0.42	0.42	0.19	0.26	0.27	0.37	0.41	0.41	0.41	0.39	0.40	0.35				
%Rank	35	40	60	75	80	15	75	40	25	45	100	1	3	100	15	30	15	20

EPDs as at July 2023 TOP 35%

LONGEVITY

(DDF,RCF,OHF,DLF)

ASR Longevity Y184 | 29SM0479 | Owned by: Altenburg Baldy Ranch Co and Mike Rains, KS; ABS Global, Inc., WI



Cow Maker Deluxe

- Backed by a cow family known for good feet, sound udders, excellent fertility and amazing longevity
- High performance sire with proven carcass value
- DNA tested homozygous black, homozygous polled, PB SM

AU Reg. No.	IMUPG184
USA Reg. No.	2598898
Born	17/02/2011
Birth Weight	42kg
Weaning Weight	320kg
Yearling Weight	604kg
Colour	Homo Black
Polled	Homo Polled

Hooks Pacesetter 8P
ASR/GLS Pacesetter U862
 GLS S82
 ASR Showcase K053
ASR Miss Primrose M231
 ASR Miss Fanfare G720



Daughter: ZMJPT050

	CED	BW	WW	YW	Milk	MCE	MWWT	STAY	DOC	CW	REA	FAT	MARB	YG	AAPI	ATI	API	TI
EPD	+10.1	+2.6	+81.5	+123.0	+16.8	+9.5	+57.6	+19.0	+9.2	+37.9	+1.19	-0.088	+0.19	-0.48	\$69.91	\$75.44	\$139.92	\$80.27
ACC	0.68	0.89	0.87	0.87	0.71	0.63	0.76	0.51	0.77	0.68	0.65	0.57	0.65	0.52				
%Rank	50	55	35	35	95	5	75	15	90	20	4	45	25	25	35	20	20	25

EPDs as at July 2023 TOP 35%



TORONTO

Woonallee Toronto T274 | 29SM0535 | Owned by: GB Livestock, NSW



Woonallee Toronto T274



Dam: Wombramurra XSIM M Lky One H21

Reg. No.	WEPT274
Born	19/04/2022
Birth Weight	44kg
Weaning Weight	430kg
Weight 375 days	760kg
SS 15.5 months	41cm
Polled	Homo Polled
Colour	Black

NCB Cobra 47Y (P)(B)

Mader Walk This Way 224B (P)(B)

Mader P Iron Sugar 7X (P)(B)

TNT Tanker U263 (P)(B)

Wombramurra XSIM M Lky One H21 (P)(B)

GW Miss Lucky One 520R (P)

The Place To Be

- Record priced \$55,000 Australian Black Simmental Sire sold at the 2023 Woonallee Spring sale to GB Livestock
- Every genetic decision is a building block towards creating a better animal year on year, and we believe Toronto is the next black Simmental bull to fit that mould
- A thumping Mader Walk This Way son. Walk This Way has been used extensively in North American programs
- Like his sire, Toronto exemplifies all the qualities of an elite modern day Australian Simmental
- Dopey quiet, sound footed and has plenty of softness, length of body and skin to suit many types of females
- Longevity runs strong in Toronto's pedigree with his dam H21 a TNT Tanker daughter impressively still in the herd at Woonallee at 11 years of age and is yet again raising a cracking calf
- Check out T274's data - awesome calving ease, low birth with big growth! Top 5% docility, top 10% milk and carcass data to burn including top 10% carcass weight and top 15% eye muscle EPDs!
- Toronto is a no-holes, absolute must-use, go-to sire for Spring 2023

	CE	BW	WW	YW	MILK	MCE	MWWT	STAY	DOC	CW	REA	FAT	MARB	YG	API	TI
EPD	13.6	0.5	91.1	143.7	28.9	10.3	74.4	15.4	17.0	43.8	1.07	-0.110	0.07	-0.48	139.26	87.66
ACC	0.42	0.45	0.44	0.43	0.20	0.24	0.28	0.34	0.39	0.41	0.39	0.34	0.39	0.33		
%Rank	20	20	10	5	10	2	3	55	5	10	15	85	50	30	20	10

EPDs as at August 2023 **TOP 35%**

WINDFALL

(AMF,CAF,DDF,OSF,NHF,DLF,OHF,THF,PHAF)

GW Windfall 285J | 29SM0510 | Owned by: Triangle J Ranch, NE; All Beef LLC, IL; ABS Global, Inc., WI



Reg. No.	IMU1J285
USA Reg. No.	3875084
Born	19/02/2021
Birth Weight	36kg
Weight 205 days	307kg
Weight 365 days	579kg
YFS	5.7
Colour	Homo Black
Polled	Homo Polled

Leachman Prophet J030Z

Southern Fortune Teller

GW Miss Prem Beef 246Z

TEX Playbook 5437

GW Miss Playbook 044F

GW Miss Gld Digger 281Y

	CED	BW	WW	YW	ADG	CEM	Milk	MWW	STAY	DOC	CW	YG	MARB	BF	REA	SHR	API	TI
EPD	+15	-1.4	+88	+145	+36	+9	+21	+64.4	+13.5	+15.7	+58	-0.11	+7.5	-0.25	+7.8	-0.46	\$165	\$98
ACC	0.45	0.49	0.47	0.47	0.47	0.24	0.18	0.28	0.31	0.38	0.43	0.34	0.38	0.36	0.40	0.03		
%Rank	20	25	20	10	5	20	75	35	70	15	3	85	10	75	35	4	10	3

EPDs as at July 2023 **TOP 35%**

Predicting Profit And Sustainability

- Outcross pedigree with great mating flexibility
- Fast from birth to weaning coupled with strong marbling and maternal genetics
- A truly dense made specimen with loads of rib, mass and fleshing ability
- Homozygous black, homozygous polled (DNA confirmation pending), 1/2 SM, 1/2 AN



MGS: TEX Playbook 5437

FIREMAN

(AMF,CAF,DDF,DLF,NHF,OSF,THF,PHAF)

EGL Fireman 111F (PP) | 29SM0492 | Owned by: Hooks Farms, MD; Eagle Pass Ranch, SD; ABS Global, Inc., WI



Reg. No.	IMU1P111
USA Reg. No.	3498946
Born	15/03/2018
Birth Weight	38kg
Weight 205 days	284kg
Weight 365 days	540kg
Weight 24 months	695kg
SS 18 months	37.5cm
FS	6
Polled	Homo Polled

Connealy In Sure 8524 (P) (B)

G A R Sure Fire (P) (B)

Chair Rock 5050 G A R 8086 (P) (B)

Mr Nic Upgrade U8676 (P) (B)

TJ 22X

Ms Miss 306R

	CED	BW	WW	YW	Milk	MCE	MWWT	STAY	DOC	CW	REA	FAT	MARB	YG	AAPI	ATI	API	TI
EPD	+18.0	-2.4	+69.6	+104.7	+28.4	+10.2	+63.2	+13.0	+10.3	+19.3	+0.81	-0.064	+0.37	-0.38	\$48.94	\$34.84	\$151.42	\$85.15
ACC	0.47	0.49	0.46	0.44	0.13	0.22	0.24	0.31	0.12	0.38	0.36	0.33	0.36	0.31				
%Rank	2	2	80	80	15	3	45	75	80	85	55	20	10	70	85	85	10	10

EPDs as at July 2023 **TOP 35%**

Call The Fireman

- Offers the opportunity to improve efficiency and profitability
- Our pick of the strong offering from the 22X cow at Eagle Pass
- Calving ease, performance and end product merit
- DNA tested homozygous polled and homozygous black
- 1/2 SM, 1/2 AN
- Fireman is a sire with great outlook, lovely head and neck carriage, smooth shouldered and long over the spine
- Clean fronted, good sheath, excellent scrotal

JEFFERSON

(AMF,NHF,DLF,OHF,DDF,OSF,THF,PHAF)

CLRS Jefferson 951J | 29SM0514 | Owned by: All Beef, LLC, IL; Clear Springs Cattle Co, MN; ABS Global, Inc, WI



Reg. No.	
USA Reg. No.	3874301
Born	21/02/2021
Birth Weight	95 lbs
Weight 205 days	646 lbs
Weight 365 days	1190 lbs
SS 21 Months	41cm

CDI Verdict 220Y
Leachman Decree X936D
 Rempe Bentley BL010
 Hook's Delegate 64D
M4 Ms Desire 911G
 M4 Ms Impulse E6Z

A Vote For Jefferson Is A Vote For Quality

- Arguably the best red SimAngus™ to sell in the spring of 2023
- A high performance, high indexing prospect with a differentiated pedigree allowing great mating flexibility
- Sire is a documented high accuracy sire producing high \$Profit progeny with added fertility, stayability and ability to withstand altitude
- Dam is a rising donor for Meinders Stock Farm
- DNA tested homozygous polled, 5/8 SM, 9/32 AN, 3/32 AR

	CED	BW	WW	YW	ADG	CEM	Milk	MWW	STAY	DOC	CW	YG	MARB	BF	REA	SHR	API	TI
EPD	+15.0	+0.7	+87.0	+134.0	+29	+7.0	+29.0	+72.2	+22.7	+13.0	+41.0	-0.32	+0.70	-0.098	+0.65	-0.12	\$175	\$95
ACC	0.50	0.60	0.52	0.52	0.52	0.26	0.17	0.27	0.32	0.37	0.42	0.34	0.40	0.35	0.40	0.04		
%Rank	25	60	20	20	35	40	10	10	1	40	25	25	10	4	55	99	3	10

EPDs as at July 2023 **TOP 35%**

HOMELAND

(AMF,CAF,DDF,M1F,NHF,OSF,MAF,OHF,DLF)

CLRS Homeland 327H | 29SM0502 | Owned by: Black Summit Cattle Co, WY; Clear Springs Cattle Co, MN; All Beef, NE; ABS Global, Inc., WI



Reg. No.	IMU1R327
USA Reg. No.	3709222
Born	18/02/2020
Birth Weight	39kg
Weaning Weight	285kg
Yearling Weight	545kg
Colour	Homo Black
Polled	Homo Polled

GW Step Out 672X (P)(B)
Redhill 672X X004 231A
 GW Miss Prem Beef X004 (P)(B)
 MCM Top Grade 18X (P)(B)
CLRS Always Xcellent
 Hook's Xcellence 87X (P)(B)

Homeland is Calling You

- Captivating Beauty and the Beast in one high performance package
- Impeccable EPD profile, moderate birth big spread bull with breed leading STAY, Marb, REA, API and TI
- His dam, with her superior production and near perfect phenotype and udder, is earning her position as a premier donor for Clear Springs Cattle Company
- Homozygous black, homozygous polled by parentage, 5/8 SM, 3/8 AN

	CED	BW	WW	YW	Milk	MCE	MWWT	STAY	DOC	CW	REA	FAT	MARB	YG	AAPI	ATI	API	TI
EPD	15.5	-2.5	75.8	116.6	15.6	9.5	53.5	23.7	13.0	26.5	1.04	-0.066	0.78	-0.42	81.79	50.54	195.12	97.97
ACC	0.25	0.27	0.27	0.27	0.21	0.21	0.23	0.18	0.28	0.28	0.27	0.24	0.27	0.23				
%Rank	10	2	55	50	95	5	90	1	40	65	15	20	1	50	10	65	1	1

EPDs as at August 2023 **TOP 35%**



SERGEANT

(RGF, NT812F LeptinC/C)

Whiteline Sergeant S166 (P) (Speckled) | 29SK0005 | Owned by: Whiteline Speckle Park



Sire: Rose Hill American Pie L21



MGS: Johner Stock Farm Trade Secret

Reg. No.	WLS S166
Born	03/03/2021
Poll	Homo Polled
Red Gene	Free
Myostatin	Free

Rose Hill Vincent (Speckled)

Rose Hill American Pie L21 (P) (Speckled)

Kahleatha Gunna Get U (White)

Johner Stock Farm Trade Secret (White)

Whiteline Wilma (P) (White)

Codiak Wilma GNK 3W (P) (Speckled)

Laying Down The Law

- The HOTTEST American Pie L21 son to emerge on Australia's radar, offering an astounding blend of phenotype, structure and a versatile, no-holes data set
- Immaculately balanced from nose to tail, Sergeant's presence inspires awe with a strong head, a long, clean front, smooth shoulder set and exceptional top line strength
- From behind, you are captivated by the depth and thickness of his hindquarter and his squareness over the loin. This is a sire who will add that much needed punch and squareness to his progeny
- Now consider the data profile that S166 boasts, including ultra-low GL, super low birth and EXPLOSIVE growth
- Sergeant's fabulous carcass EBV profile is the cherry on the cake, including big carcass weight, EMA and high RBY EBVs
- S166 is unmatched for his ability to offer an ultra-low BW and GL package with such an explosive growth and powerful phenotypic profile
- Homozygous polled and tested free of genetic conditions
- First progeny have been born easy and oozing style and class

	GL	BW	200D	400D	600D	MCW	Milk	SS	CWT	EMA	RIB	Rump	RBY%	IMF%
EBV	-1.5	-0.3	+14	+28	+36	+35	+5	+0.8	+30	+1.3	-1.0	-1.4	+1.5	-0.6
ACC	53%	76%	71%	68%	66%	52%	44%	56%	55%	40%	52%	51%	46%	45%
%Rank	8	9	58	32	38	44	38	15	10	16	92	91	4	95

EBVs as at July 2023 **TOP 20%**



BJS

CANDIDATE

UNITED

Arubial United P0342 | 29KB0008 | Owned by: Arubial Wagyuus



Sire: Michifuku F126



Daughter: Arubial S0376



Daughter: Arubial S0095

Reg. No.	MYMFP0342
Born	30/08/2018
Grade	Fullblood 100% Wagyu
Colour	Black

Gene Tests:
 B3 - Free F11 -Free
 CHS - Free IARS - Free
 CL16 - Free 57% Tajima

World K's Michifuku
Sumo Cattle Co Michifuku F126
 Sumo Cattle Co Hana C152
 Macquarie Wagyu Y408
Macquarie Wagyu C1624
 Macquarie Wagyu F Z736

The King of Combination Traits

- Perhaps the best combination bull in the Wagyu breed today
- Search for a sire in top 1% for GL, all growth and carcass weight traits and top 5% marbling seems simple. United is the ONLY bull that makes the list!
- United does it easily with marbling in top 2%, carcass weight top 1%!
- United is also top 1% in all \$ Indexes
- United ranks as the number 1 sire for Wagyu Breeder Index, Self Replacing Index and Full Blood Terminal Index; number 4 sire for FI Terminal Index
- Tested free for all known genetic conditions
- If you are breeding Wagyuus and wish to accelerate your herd, United is the first choice sire!
- International semen available

	GL	BW	200D	400D	600D	MCW	Milk	SS	CWT	EMA	Rump	RBY%	MS	MF	WBI	SRI	FTI	F1TI
EBV	-4.5	+4.8	+27	+56	+82	+95	+2	-0.1	+70	+3.7	+1.6	-0.5	+2.6	+0.46	\$399	\$390	\$327	\$280
ACC	93%	96%	97%	96%	92%	80%	75%	90%	88%	87%	86%	81%	85%	74%				
%Rank	1	99	3	1	1	1	38	45	1	30	20	82	3	2	1	1	1	1

EBVs as at July 2023 **TOP 20%**

RHYME

Circle8Bulls Rhyme R113 | 29KB0014 | Owned by: L T Cooper Cattle Trust



Reg. No.	LTCFR113
Born	23/08/2020
Grade	Fullblood 100% Wagyu
Colour	Black
Gene Tests:	F11 -Free
B3 - Free	IARS - Free
CHS - Free	59% Tajima
CL16 - Free	

Sumo Cattle Co Michifuku F126

Arubial United P0342

Macquarie Wagyu C1624

Sumo Cattle Co Michifuku F154

Circle8Bulls P0187

Longford R8390

Poetry In Motion

- Extremely limited semen available
- An exciting son of the famed United, with indexes MS and MF
- Top 1% all indexes and marble score and fineness
- Top 6% 600 day, top 5% carcass weight
- Top 11% 200D & top 10% 400D
- Full suite of data collected
- Free of all known genetic conditions
- Export semen now available to all parts of the world including EU

	GL	BW	200D	400D	600D	MCW	Milk	SS	CWT	EMA	Rump	RBV%	MS	MF	WBI	SRI	FTI	F1TI
EBV	-1.5	+3.4	+19	+36	+55	+70	-2	-0.1	+48	+3.1	+2.7	-1.2	+3.0	+0.55	\$343	\$356	\$306	\$278
ACC	67%	72%	74%	72%	71%	62%	61%	63%	68%	64%	65%	56%	65%	57%				
%Rank	11	88	11	10	6	2	74	45	5	38	8	96	1	1	1	1	1	1

EBVs as at July 2023 **TOP 20%**

RHYTHM

Arubial Rhythm R0750 | 29KB0012 | Owned by: Arubial Wagyu



Reg. No.	MYMFR0750
Born	20/11/2020
Grade	Fullblood 100% Wagyu
Colour	Black
Gene Tests:	F11 -Free
B3 - Free	IARS - Free
CHS - Free	57% Tajima
CL16 - Free	

Sumo Cattle Co Itoshigenami C0158

Coates Itoshigenami G113

Coates Tani C446

Macquarie Prelude M0495

Arubial P0255

Peppermill Grove L0021

On The Beat

- Three quarter brother to Anticipated, being a G113 out of a Prelude daughter of Bond's and Anticipated's dam
- Offers top 28% GL, moderate growth and top 6% MS and Top 8% MF
- Export semen now available to all parts of the world including EU

	GL	BW	200D	400D	600D	MCW	Milk	SS	CWT	EMA	Rump	RBV%	MS	MF	WBI	SRI	FTI	F1TI
EBV	-0.7	+0.4	+7	+16	+17	+17	-7	-0.5	+25	+4.9	-2	+0.6	+2.3	+0.38	\$233	\$256	\$221	\$214
ACC	67%	70%	73%	71%	70%	61%	62%	60%	68%	65%	66%	54%	67%	57%				
%Rank	28	35	63	52	63	58	96	65	33	18	84	30	6	8	10	5	5	3

EBVs as at July 2023 **TOP 20%**

ANTICIPATED

Arubial Anticipated Q0014 | 29KB0010 | Owned by: Arubial Wagyu



Reg. No.	MYMFQ0014
Born	14/03/2019
Grade	Fullblood 100% Wagyu
Colour	Black

Gene Tests:
 B3 - Free
 CHS - Free
 CL16 - Free
 F11 - Free
 IARS - Free
 61% Tajima

Sumo Cattle Co Itoshigenami C0158
Coates Itoshigenami G113
 Coates Tani C446
 Mayura Itoshigenami Jnr
Peppermill Grove L0021
 Peppermill Grove G037

Highly Anticipated

- Maternal brother to Bond 007
- Anticipated excels with top 4% EMA, top 4% MS and top 5% MF EBVs
- All indexes in top 5% of the breed!
- Bond's maternal brother
- Only one of two Wagyu sires that are in the top 5% for GL, EMA and marbling and he does it so easily
- Ideal sire for beef on beef plus a great beef on dairy option, early calving, hybrid growth with power carcass traits
- A go to Wagyu heifer carcass bull option
- A global international sire including the EU
- Stay tuned for new data runs on this exciting young sire!

	GL	BW	200D	400D	600D	MCW	Milk	SS	CWT	EMA	Rump	RBY%	MS	MF	WBI	SRI	FTI	F1TI
EBV	-0.5	+0.1	+12	+23	+27	+19	-1	+1.3	+49	+8	-1.1	+1.4	+2.5	+0.4	\$255	\$267	\$261	\$247
ACC	91%	94%	95%	95%	85%	72%	63%	84%	80%	78%	80%	75%	75%	65%				
%Rank	33	28	38	32	4	54	62	8	7	4	70	7	4	5	5	2	1	1

EBVs as at July 2023 **TOP 20%**

PRELUDE

Macquarie Prelude M0495 (AI) (ET) | 29KB0005 | Owned by: Arubial Wagyu



Reg. No.	BDWFM0495
Born	10/10/2016
Grade	Fullblood 100% Wagyu
Colour	Black

Gene Tests:
 B3 - Free
 CHS - Free
 CL16 - Free
 F11 - Free
 F13 - Free
 IARS - C
 IGTEND - 3
 SCD-AA
 60% Tajima

Kitateruyasudoi J2810 Hongen (IMP JAP)
Macquarie Wagyu Y408
 TWA F U561
 World K's Michifuku
Macquarie Wagyu C1589
 Macquarie Wagyu F X358

International Super Sire

- The new benchmark sire for the breed both domestically and internationally
- Tremendous uptake in both domestic seedstock and commercial herds and huge export sales around the globe
- Prelude semen is on 6 continents around the world!
- Semen quality is outstanding with many high conception results in FTAI and HCR
- Admire his data - great indexes, top 1% GL and top 25% for 400D EBVs!
- 3rd placed sire in Wagyu Association nett feed efficiency trial for Australia

	GL	BW	200D	400D	600D	MCW	Milk	SS	CWT	EMA	Rump	RBY%	MS	MF	WBI	SRI	FTI	F1TI
EBV	-4.1	+1.4	+12	+26	+30	+27	-9	+0.3	+8	+0.3	-3.3	+0.1	+1	+0.09	\$183	\$185	\$152	\$137
ACC	94%	97%	97%	97%	97%	90%	93%	88%	95%	91%	92%	83%	94%	81%				
%Rank	1	57	38	25	33	38	99	28	73	75	95	55	33	88	33	28	34	38

EBVs as at July 2023 **TOP 20%**

SHAWSHANK

Arubial Shawshank S1011 | 29KB0015 | Owned by: Arubial Wagyu



Arubial S0208,
7/8 blood brother

The Ultimate Redemption

- A three quarter brother to Anticipated being a G113 out of a Junior cow
- Top 16% GL, Top 6% BW
- Carcass Weight top 8%
- Top 4% MS & Top 2% MF
- Export semen now available to all parts of the world including EU

Reg. No.	MYMFS1011
Born	20/07/2021
Grade	Fullblood 100% Wagyu
Colour	Black
Gene Tests:	IARS - Free
B3 - Free	55.6% Tajima
CHS - Free	
CL16 - Free	
F11 - C	

Sumo Cattle Co Itoshigenami C0158
Coates Itoshigenami G113
 Coates Tani C446
 Mayura Itoshigenami Jnr
Miku Q10
 Macquarie Wagyu F D2041

	GL	BW	200D	400D	600D	MCW	Milk	SS	CWT	EMA	Rump	RBV%	MS	MF	WBI	SRI	FTI	F1TI
EBV	-1.2	-1.6	+7	+21	+30	+26	-3	+0.1	+37	+3.1	-0.7	+0.6	+2.5	+0.41	\$247	\$261	\$237	\$223
ACC	67%	71%	73%	71%	70%	62%	63%	61%	69%	66%	67%	56%	68%	59%				
%Rank	16	6	62	36	33	44	82	3	36	11	63	30	4	2	6	4	3	2

EBVs as at July 2023 **TOP 20%**

RENDITION

Arubial Rendition R0734 | 29KB0019 | Owned by: Arubial Wagyu



A Stellar Performer

- Rendition is one of only 10 bulls that has the combination of high \$ indexes combined with marbling score and marbling fineness
- Then add his short GL and his high early growth and there are only 3 in the breed
- A three quarter brother to the popular Arubial Anticipated being a G113 out of a Junior cow
- Rendition is already seeing heavy use in seedstock programs!
- Export semen now available for all parts of the world including the EU

Reg. No.	MYMFR0734
Born	20/12/2020
Grade	Fullblood 100% Wagyu
Colour	Black
Gene Tests:	IARS - F
B3 - Free	53% Tajima
CHS - Free	
CL16 - Free	
F11 - Free	

Sumo Cattle Co Itoshigenami C0158
Coates Itoshigenami G113
 Coates Tani C446
 Mayura Itoshigenami Jnr
Arubial Q0233
 Arubial N0080

	GL	BW	200D	400D	600D	MCW	Milk	SS	CWT	EMA	Rump	RBV%	MS	MF	WBI	SRI	FTI	F1TI
EBV	-0.8	+0.4	+16	+22	+25	+22	-3	-0.1	+38	+6.5	+1	+0.3	+2.7	+0.51	\$296	\$326	\$287	\$276
ACC	66%	70%	73%	71%	69%	61%	62%	60%	68%	65%	66%	55%	67%	58%				
%Rank	25	35	22	32	42	48	84	45	11	8	30	46	2	1	2	1	1	1

EBVs as at July 2023 **TOP 20%**



BOND

Arubial Bond Q007 | 29KB0009 | Owned by: Arubial Wagyu



Sire: Mayura Itoshigenami Jnr



Dam: Peppermill Grove L0021



Daughter: Arubial S0027

Reg. No.	MYMFQ007
Born	10/03/2019
Grade	Fullblood 100% Wagyu
Colour	Black

Gene Tests:
 B3 - Free F11 - C
 CHS - Free IARS - Free
 CL16 - Free 72% Tajima

Itoshigenami (Imp USA)
Mayura Itoshigenami Jnr
 Mayura Dai Ni Kinntou 1

Mayura Itoshigenami Jnr
Peppermill Grove L0021
 Peppermill Grove G037

The Carcass King

- Bond 007 is the Wagyu Carcass Combination King
- Ranks 1% for Marbling, top 2% for Marbling Fineness and 1% for EMA
- The best Wagyu bull for his combination of EMA, Marbling and Marbling Fineness
- Emulates his famous legendary sire, Mayura Itoshigenami Jnr, whose semen sold to a record \$72,000 a straw at the Mayura sale
- Licensed to marble and potential to deliver the best carcass results in the breed
- Export semen now available to all parts of the world including EU



Son: Arubial S0060



Son: Arubial R0726

	GL	BW	200D	400D	600D	MCW	Milk	SS	CWT	EMA	Rump	RBY%	MS	MF	WBI	SRI	FTI	F1TI
EBV	+0.3	-3	-3	-13	-12	-30	-1	+0.2	+6	+15.1	+1	+1.9	+3.3	+0.48	\$206	\$252	\$261	\$270
ACC	95%	97%	97%	97%	89%	79%	70%	93%	84%	84%	85%	81%	80%	73%				
%Rank	10	1	95	98	95	99	64	30	78	1	30	2	1	2	18	5	1	1

EBVs as at July 2023 **TOP 20%**

Benefits of Fixed Time AI (FTAI)

FTAI allows producers to increase the entire profitability of their system through easier calving,

shortened breeding and calving seasons, and improved fertility, all while reducing the

incidence of postpartum anoestrus and creating a more uniform line of calves.

+ Superior Genetics, Superior Profit

From fertility and structural traits through to carcass merit, high accuracy genomic and proven sires are perfect for increasing your bottom line.

In a 300-cow herd that is \$45,000 added to your bottom line.

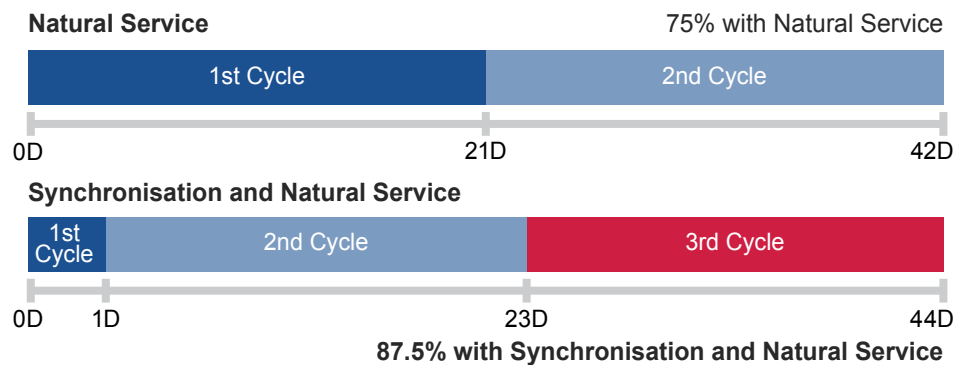
This makes your joining decisions more effective as well as improves your ability to accurately select the correct sires for your herd, improving your overall profitability.

Benchmarked herds using FTAI each year are returning \$150 per cow more than those not using FTAI.

Joining daughters of high accuracy sires to another high accuracy sire increases the overall accuracy of EBVs within the herd.

+ Increase Pregnancies

Synchronising your herd results in an extra oestrous cycle for your breeding females over a standard 42-44 day breeding season. Effectively, 50% of your females could conceive on day one of your breeding program.

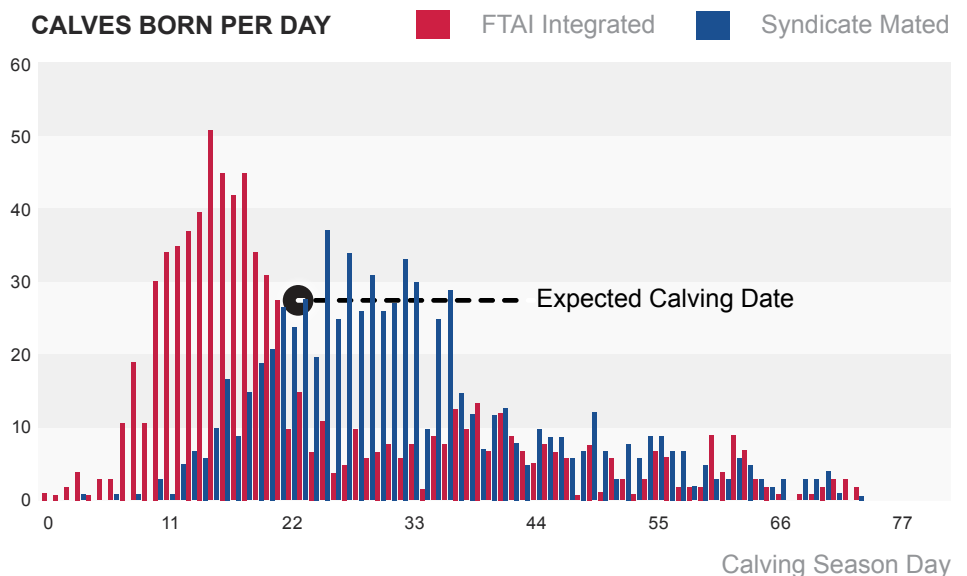


+ Shorten Your Calving Season

On average, a standard FTAI program will reduce your herd's average calving date by 9 days, now referred to as "the 9 day effect" for its sustained benefit to your herd.

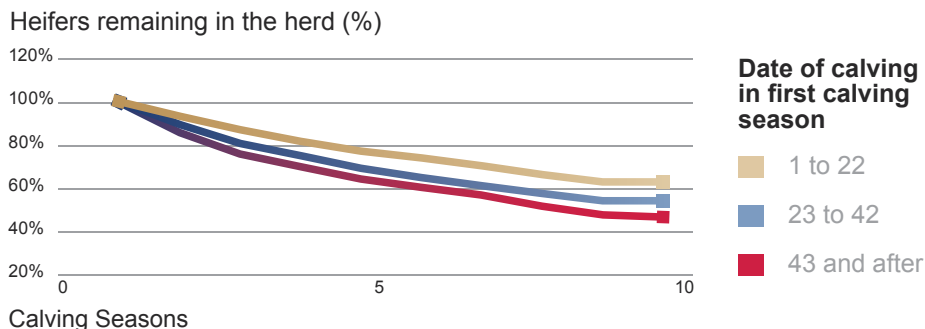
- Assuming every day equates to 1kg extra live weight, at weaning time, animals would average an extra 9 kg live weight
- At \$5/kg calves are worth an average of \$45 more at weaning time, solely due to a condensed calving interval.

Natural service will leave 43% of animals less than 50 days postpartum leading into the next breeding season. Use FTAI to reduce this "at-risk" group to only 7%!



+ Increase Longevity of Breeding Females

FTAI results in more maiden heifers calving down in the first 21-day window of a calving season, making them 13% more likely to remain in the herd as mature age cows compared to those who have their first calf after the 42-day mark of their maiden calving season.



+ Reduce Postpartum Anoestrous

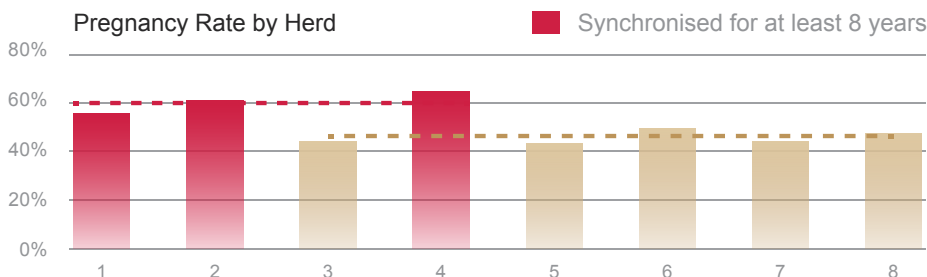
FTAI increases the average postpartum interval of your breeding females by getting them in calf earlier in the breeding season, allowing greater time

for recovery and a chance to begin cycling before the next breeding period. Using exogenous hormones through FTAI will also help animals in

postpartum anoestrous to begin cycling again, increasing the number of females available to breed on day one of the breeding season.

+ Improve Response to Synchronisation Over Time

A study headed by Dr Cliff Lamb of the North Florida Research and Education Center has demonstrated an increase in pregnancy rates among herds (shown in red) that had been previously exposed to synchronisation for at least 8 years.



Get your calves dropping earlier and boost uniformity - create your own 9-day effect.

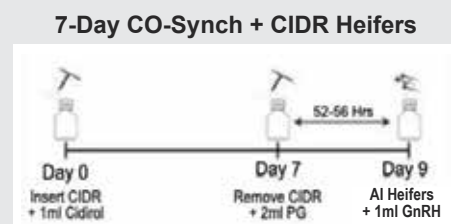
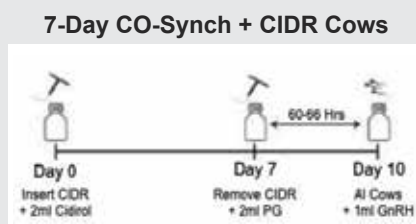
You will join larger, healthier and more mature heifers. They will get in calf earlier, calve earlier, and be

ready to conceive on day one of next year's mating program, increasing your pregnancy rates year after year.

Selecting a Protocol For Your Herd

The most commonly used protocol for beef FTAI programs is the 7-day CO-Synch + CIDR for both cows and heifers. These are essentially the same protocol, apart from a larger time interval between CIDR removal + PG and insemination of cows (60-66hr) compared to heifers (52-56hr), as shown here.

Hormone	Common Name
Oestradiol	Bomero1, Cidirol
Progesterone	CIDR Eazi-Breed
Prostaglandin (PG)	Ovuprost, Estrumate
GnRH	Ovurelin, Gonabreed



DISCLAIMER: Drugs may be hazardous to humans and unborn children. Ensure drugs are used and stored as directed. Read labels before use.

CONTACT

Beef Sales & Services

Fletch Kelly	Beef Product & Sales Manager	0419 383 341	fletch.kelly@genusplc.com
Annie Pumpa	Beef Sales Representative	0458 227 277	annie.pumpa@genusplc.com
Kim Hodder	Beef Sales - Northern Region	0438 418 113	kim.hodder@genusplc.com

ABS Sales & Services

Matt Aikenhead	Technical Services Manager	0447 583 311	matt.aikenhead@genusplc.com
Rex Barry	Western Vic	0428 436 524	rex.barry@genusplc.com
Alan Blum	Gippsland, Vic & WA	0419 689 904	alan.blum@genusplc.com
Gerard Eccles	Western Vic & Tasmania	0417 202 067	gerard.eccles@genusplc.com
Brian Enbom	Gippsland, Vic	0459 239 344	brian.enbom@genusplc.com
Shane Gardiner	Western Vic	0427 704 984	shane.gardiner@genusplc.com
Bill Morgan	Northern Vic & South Australia	0459 239 113	bill.morgan@genusplc.com
Bec Phelan	Gippsland, Vic	0428 621 957	rebecca.phelan@genusplc.com
Marcus Rees	Western Vic	0417 202 005	marcus.rees@genusplc.com

Administration

Marcus Rees	General Manager	0417 202 005	marcus.rees@genusplc.com
Bruce Ronalds	Business Operations Manager	0427 826 054	bruce.ronalds@genusplc.com

ABS Australia, 15 Scholar Drive, Bundoora Vic 3083
Accounts & Distribution - Phone: (03) 8358 8800 | Fax: (03) 8358 8888



1800 ABS BULL | www.absglobal.com/au | ABS.AU.Info@genusplc.com



SEMEN DISCLAIMER

Genus Australia, trading as ABS Australia, its employees and agents cannot guarantee the conception rate or productivity to be obtained in connection with the use of its products or recommended techniques, therefore it makes no warranty of any kind whatever, expressed or implied, which extend beyond the description of the products hereon and all warranties of merchant ability and fitness for a particular purpose are hereby disclaimed.

It is the responsibility of the purchaser to make themselves aware of ABS Australia's full Terms and Conditions. These are available by contacting the ABS Australia office on 1800 227 285, ABS Australia's website (<http://www.absglobal.com/au>) or your local ABS Sales Representative.